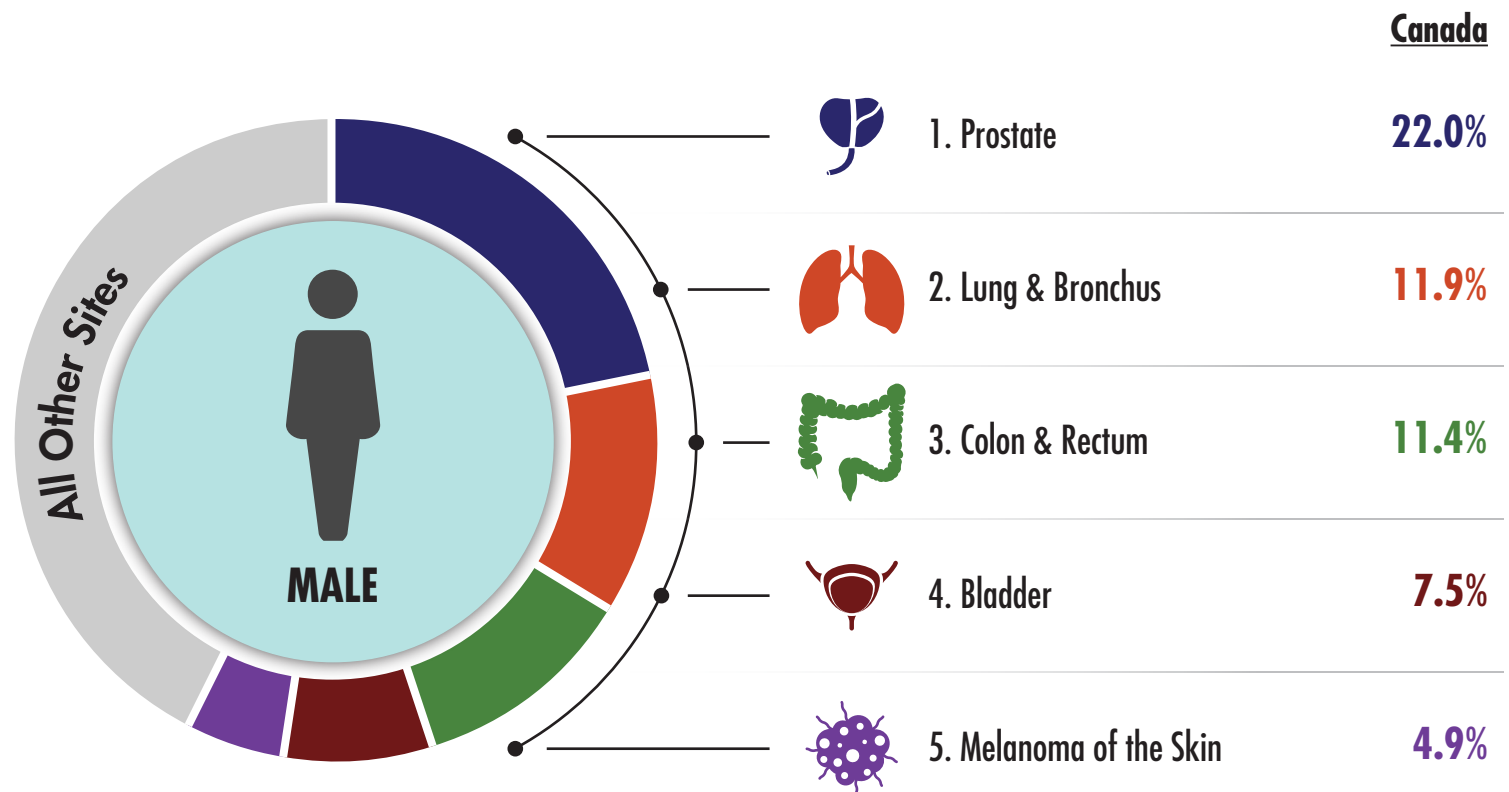
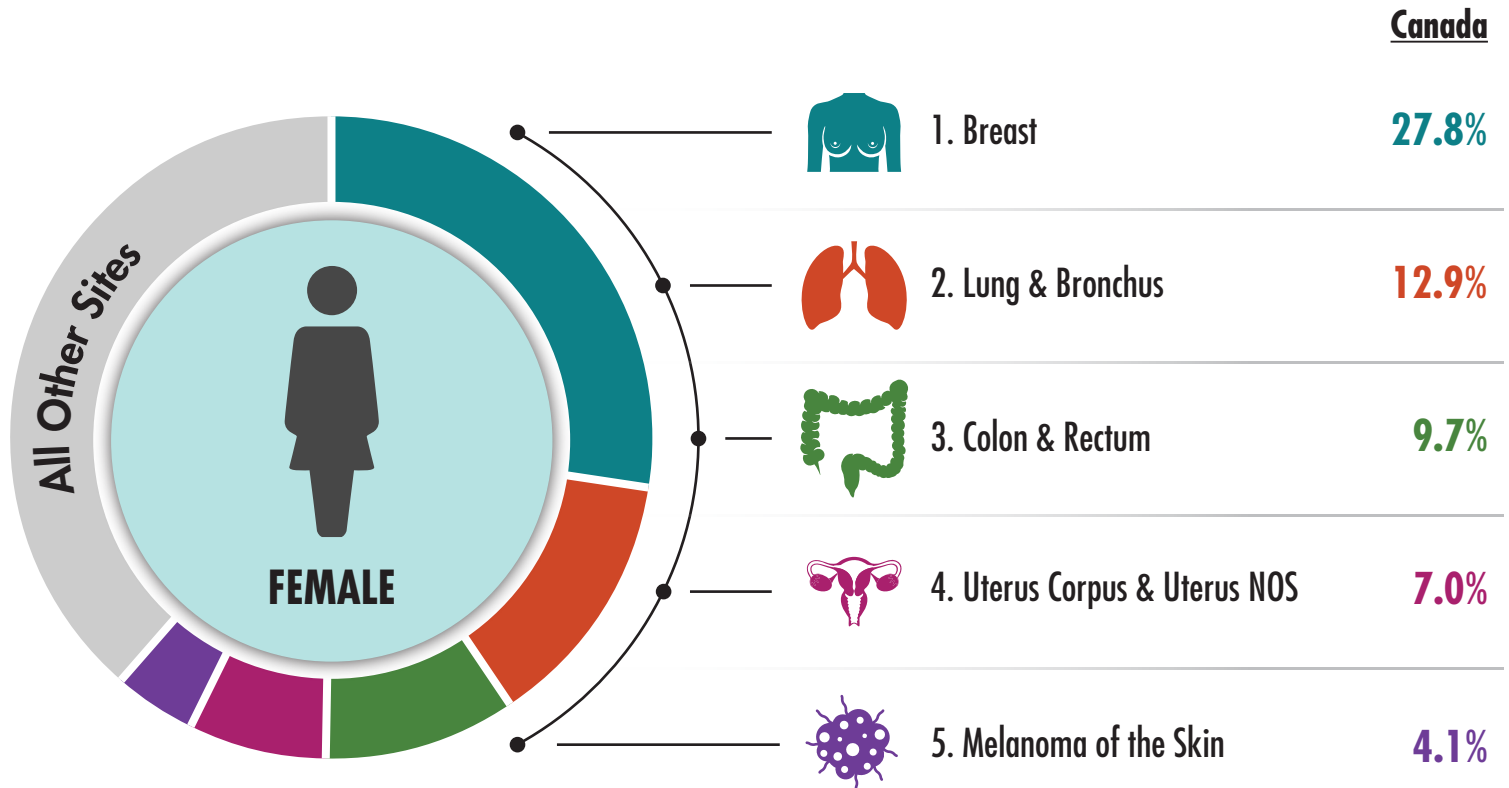


Top Five Most Commonly Diagnosed Cancers in Canada by Sex, All Races 2017–2021



Abbreviation: NOS, Not otherwise specified

Data Source: CiNA (Cancer in North America) is produced by the North American Association of Central Cancer Registries (NAACCR) and is based on U.S. and Canadian incidence data from the Centers for Disease Control and Prevention National Program of Cancer Registries (NPCR); Canadian Cancer Registry (CCR) Provincial and Territorial Registries; and the National Cancer Institute (NCI) Surveillance, Epidemiology, and End Results (SEER) Registries. Data for years of diagnosis 2017–2021 were submitted to NAACCR in December 2023.