



# Developing a V25A Custom Metafile:

## Importing Updates to an Existing Custom V25 Metafile

**Matt Mayfield, MS, CTR**

**NPCR EDITS Coordinator**

[cancerinformatics@cdc.gov](mailto:cancerinformatics@cdc.gov)

Informatics, Data Science, and Applications Team (IDSAT)  
Cancer Surveillance Branch  
Division of Cancer Prevention and Control  
NCRA

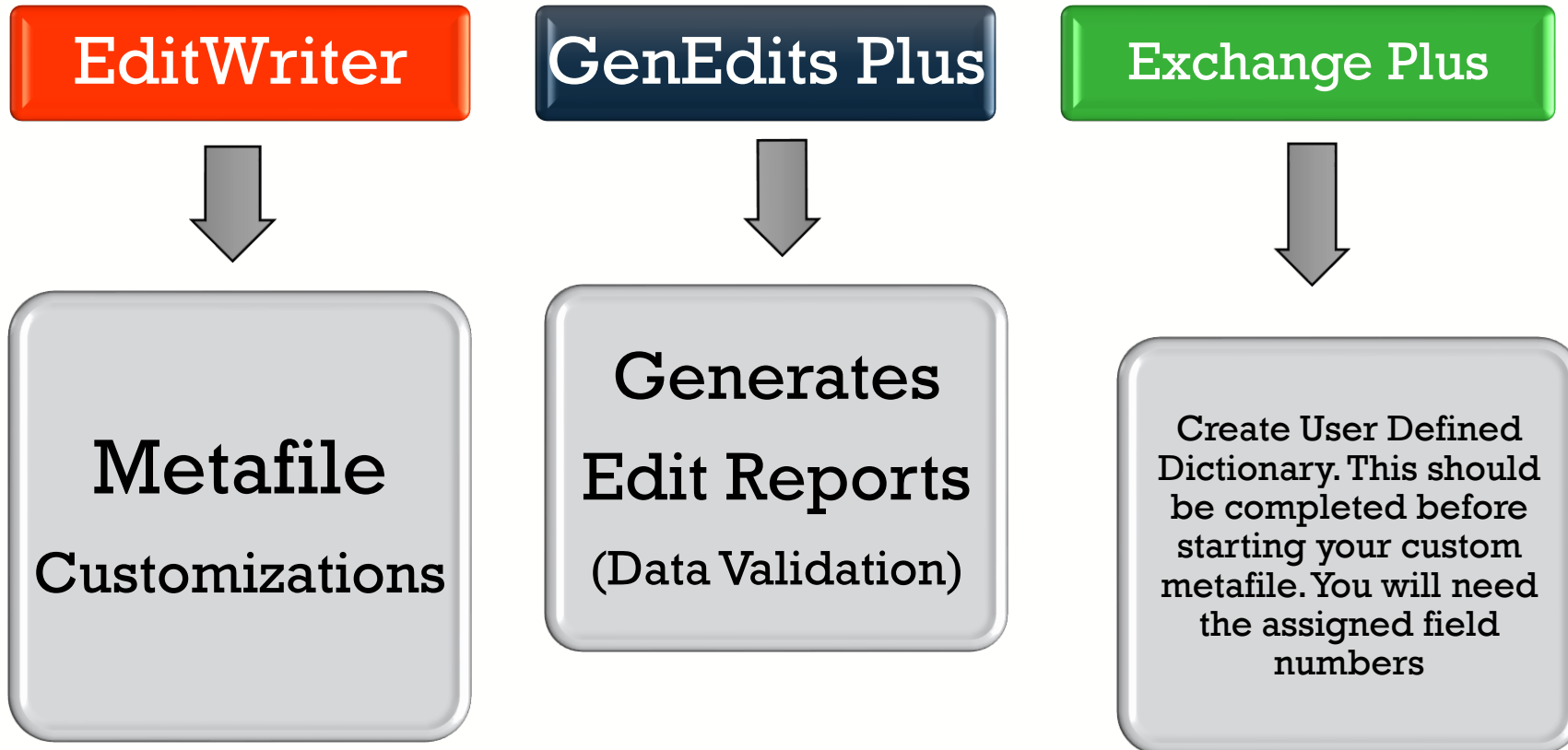


# Focus of this Presentation

## IMPORTING UPDATED STANDARD METAFILE OBJECTS

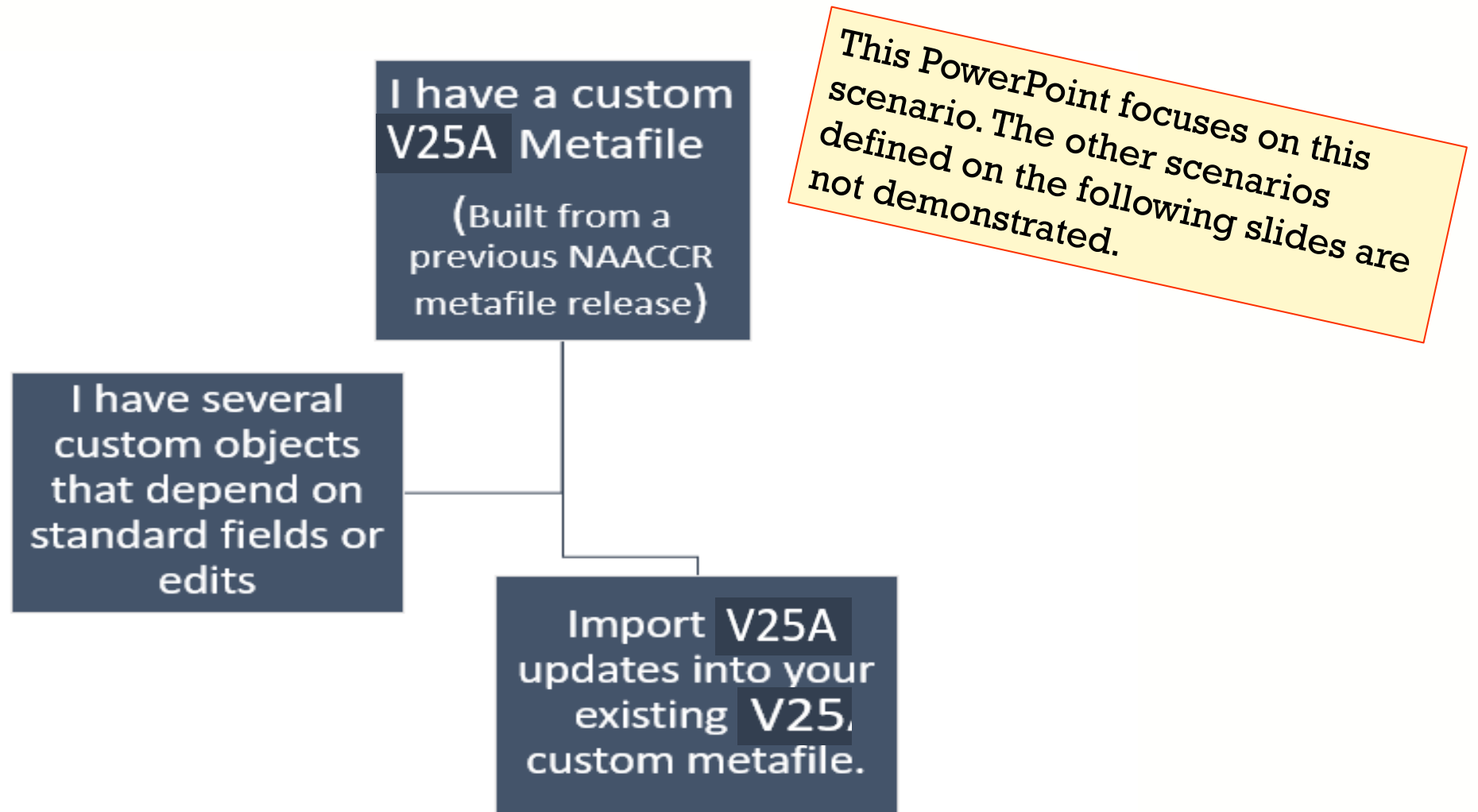
- NPCR's **EditWriter 6** software
- Associated with a **minor update** or **new metafile iteration**.
- Agencies will import V25A standard metafile updates (Import metafile) into an already customized State-Specific V25 metafile. (Target metafile)
- Know your customizations and how V25A changes may impact them.
- Some agencies may require a different approach to updating metafiles. Support is available at: [cancerinformatics@cdc.gov](mailto:cancerinformatics@cdc.gov).

# NPCR-EDITS Software



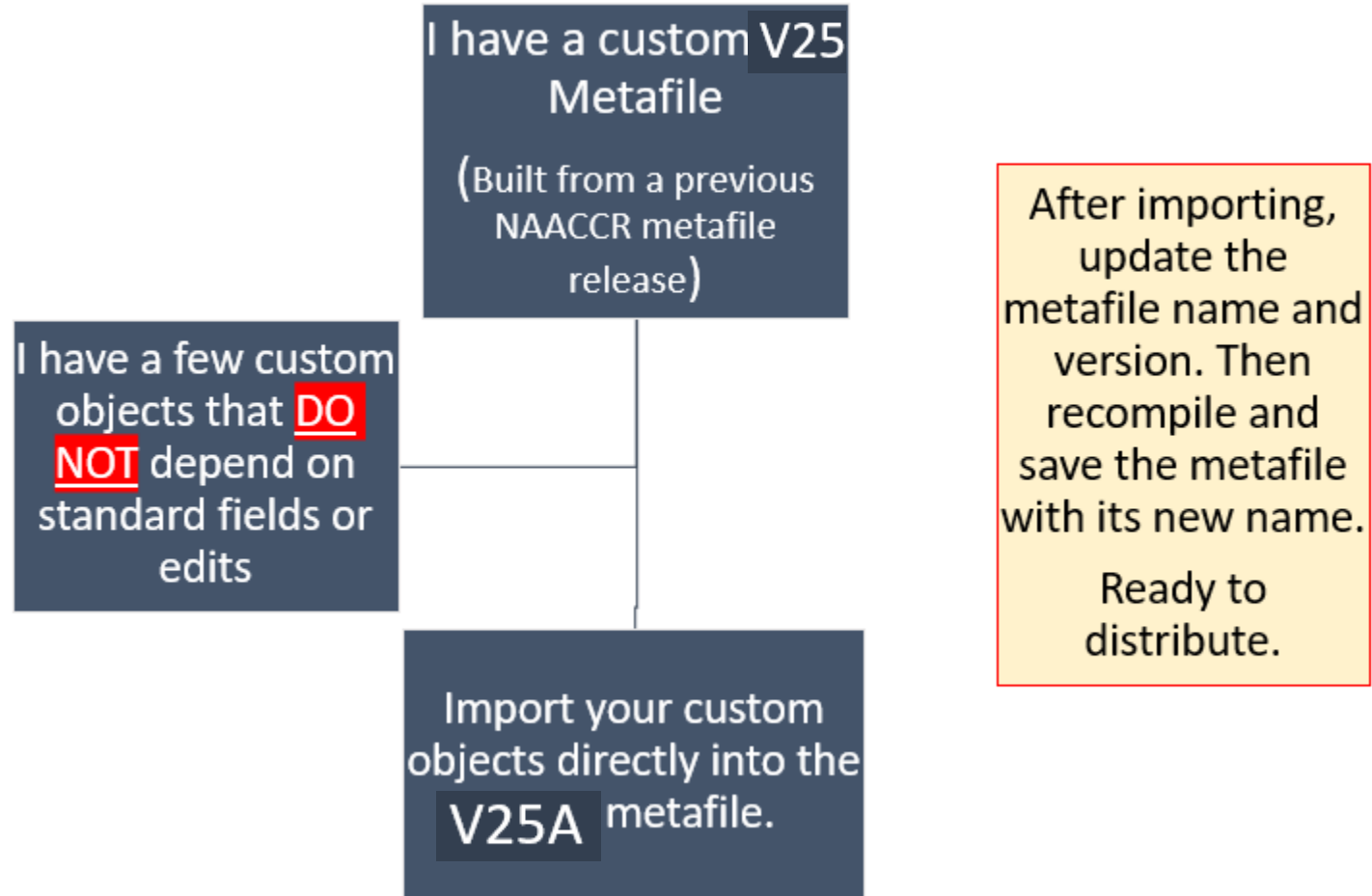
<https://www.cdc.gov/cancer/npcr/tools/edits/edits50.htm>

# New Metafile Version Release

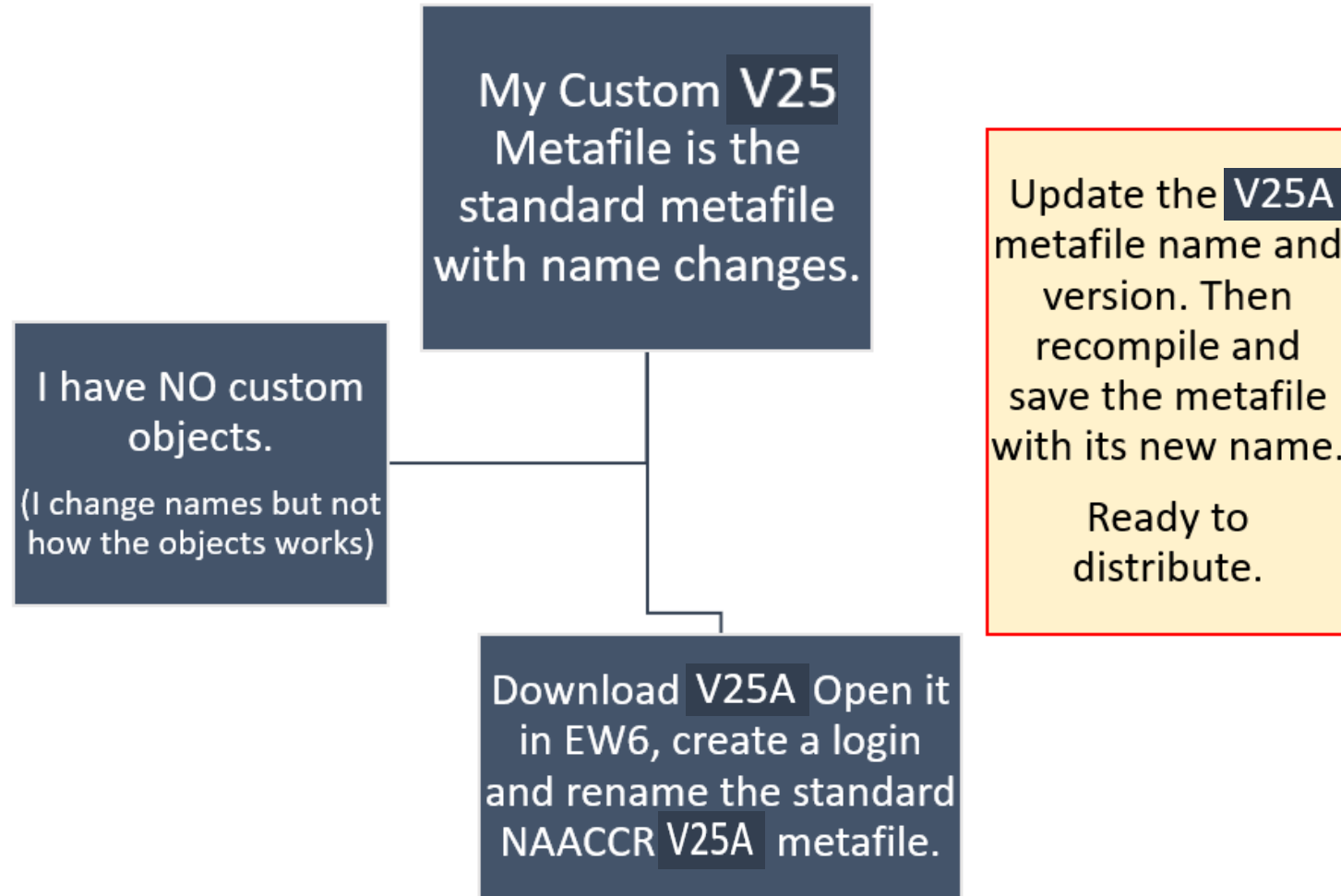


*This PowerPoint focuses on this scenario. The other scenarios defined on the following slides are not demonstrated.*

# New Metafile Version Release (Scenario 2)



# New Metafile Version Release (Scenario 3)



# PRIOR TO BEGINNING THIS PROCESS

- Review the NAACCR V25A changes spreadsheet
  - [Standards for Cancer Registries, Standard Data Edits, Volume IV – NAACCR](#)
  
- Carefully review your custom edits and edit sets
  - Many edits have changed (see Elaine's presentation)
  - Intentionally introduce edit updates or dependency updates from V25A.
  - All changes will need to be reflected in your custom edits/edit sets
  - Always review the Required Status Table
  - Update your Metafile Version and comments. These populate in validation reports.

# EditWriter 6: Import Metafile Definitions

- Target Metafile

- Metafile that will *receive* imported objects (Custom V25)
  - This metafile will receive updated objects from the standard V25A NAACCR metafile.

- Import Metafile

- Metafile from which updated objects will be selected for import (NAACCR V25A)
  - This metafile has the updated versions of standard objects/dependencies.



# Dependencies

- Import the updated NAACCR V25A metafile objects with Dependencies when prompted!
  - You want to have the most updated versions of all standard metafile dependencies in your custom metafile (fields, messages, tables, edits).
  - Most of the time, the *minor update* process requires importing *with* dependencies.

# Download the V25A metafile from NAACCR



NAACCR v25A Metafile.20241024



[Standards for Cancer Registries, Standard Data Edits, Volume IV](#)


Download the V25A NAACCR metafile to any location on your computer. This is your IMPORT metafile.

# Download NPCR's EditWriter 6

## Download and installation

---

### EditWriter

Download EditWriter Version 6.0.61.0: [EW6\\_Install.zip](#)  (compressed file, 8MB), release date September 12, 2024.

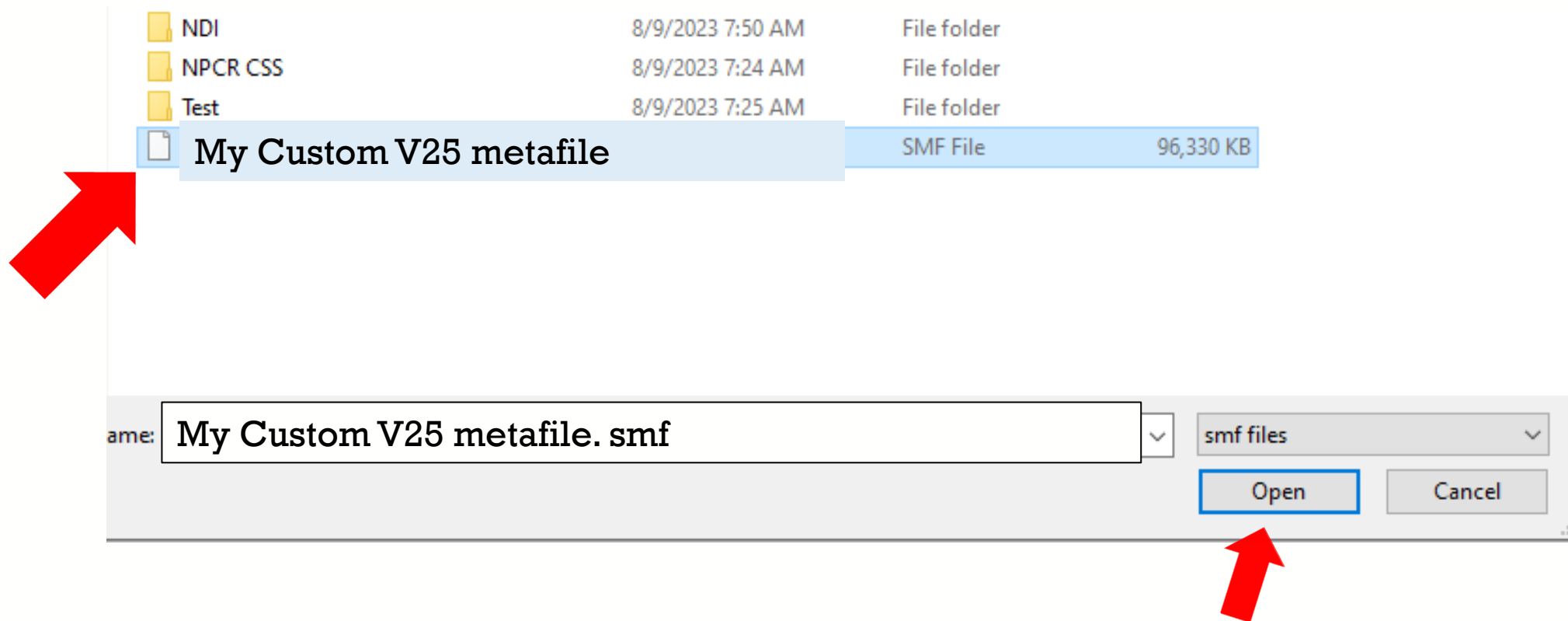
The download includes:

- Release notes and programmer documentation.
- A context-sensitive user help file.
- CStage0205.dll (for running Collaborative Stage edits).
- Configuration files for generating reports.

Download or verify you are using the latest version of EditWriter: [NPCR-EDITS | CDC](#)

# Open Your V25 Custom Metafile First in EditWriter

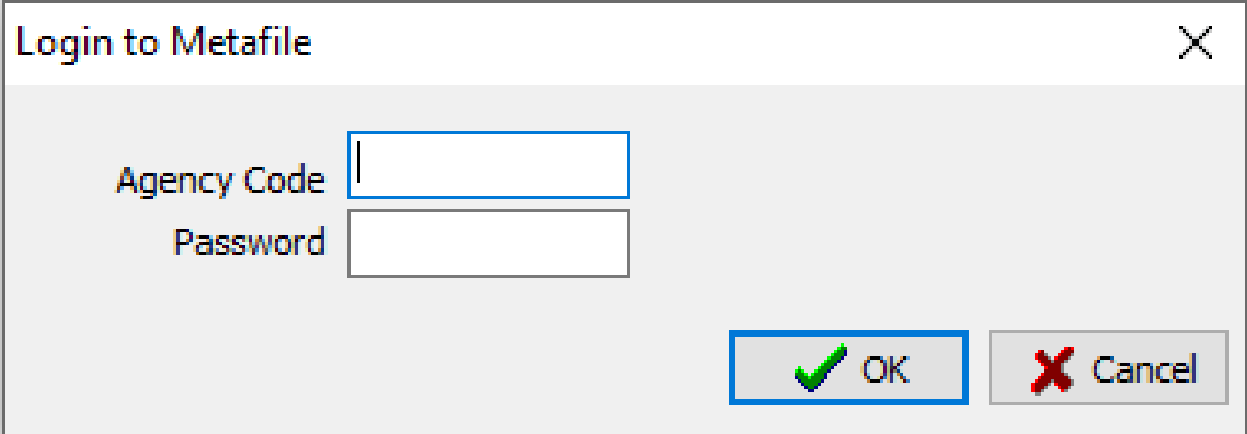
- Select OPEN and browse to the location on your computer where you saved your custom V24 metafile. Now select OPEN in the file window (lower right).



# Login Prompt will appear

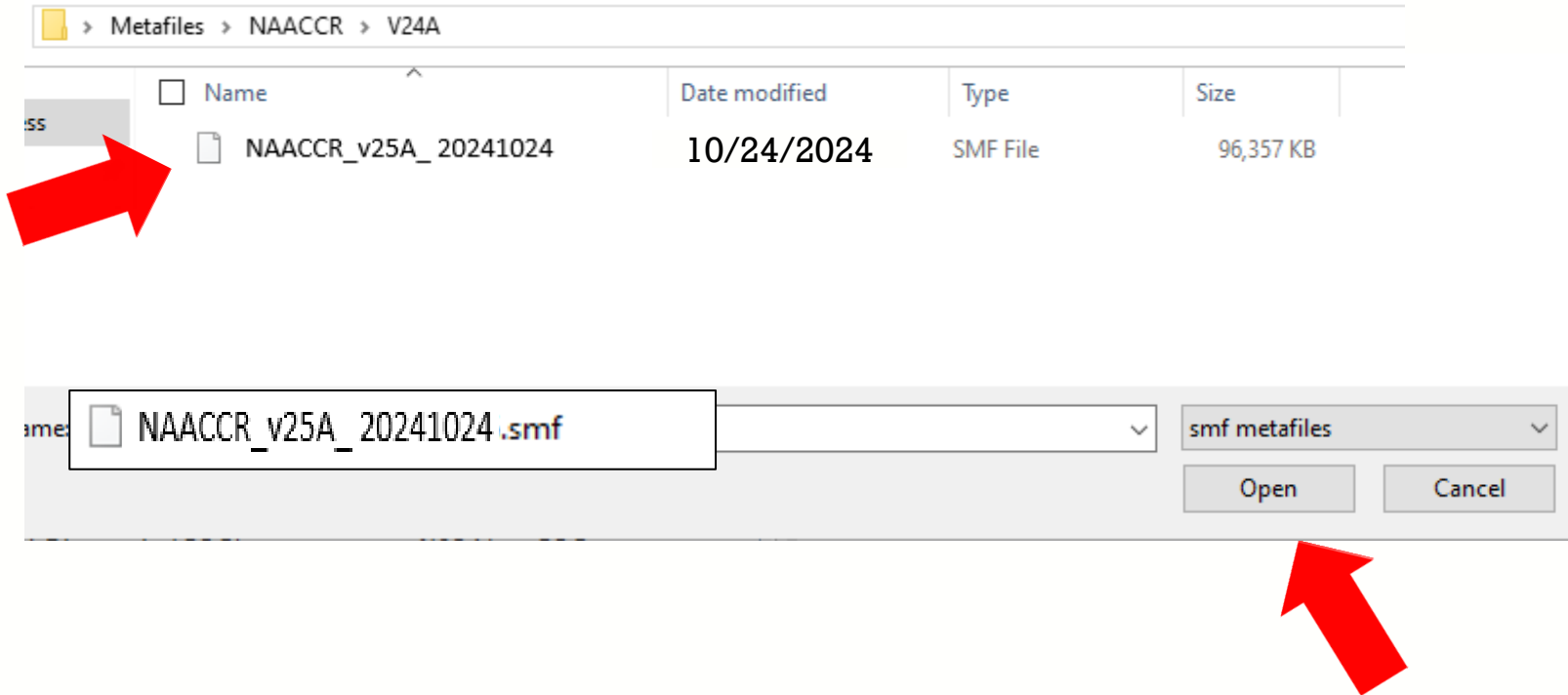
- Login to access and modify your existing custom metafile.
- Use your existing agency and password.
- We will import/open the V25A NAACCR metafile in the next step.
- All users need an agency code and password to modify a metafile.
- Never use NONE as your agency.

Instructions are found in the EditWriter help menu. Remember your credentials. NPCR does not have access to your application.



The image shows a screenshot of a 'Login to Metafile' dialog box. The dialog has a title bar with the text 'Login to Metafile' and a close button (X) in the top right corner. Below the title bar, there are two input fields: 'Agency Code' and 'Password'. The 'Agency Code' field is currently empty and has a blue border. The 'Password' field is also empty and has a white border. At the bottom right of the dialog, there are two buttons: 'OK' with a green checkmark icon and 'Cancel' with a red X icon.

# Import Metafile: Open The NAACCR V25A Metafile



Select IMPORT from the EditWriter tool bar and browse to wherever you saved the V25A NAACCR metafile. Highlight the metafile and select OPEN in the file browser.

# Edit Writer 6

MCO  
Now in  
import  
order!

**Filter Import Objects**

Agencies match on Admin Code  
Edits match on EditTag  
Edit Sets match on EditSetTag  
Fields match on FieldNumber  
Messages match on MessageNumber  
Tables match on TableName

Objects selected for import into: V25 Custom Metafile MMM 20240315.s  
0 selected for import

Status	Object	Record Key	Tag	Ag
CHG	Edit	_SYS AJCC ID (NAACCR)	N2815	NA ^
CHG	Edit	_SYS Schema ID, Site, Histo, Sex (NAACCR)	N3069	NA
CHG	Edit	Abstracted By (COC)	N0148	CO
CHG	Edit	Behavior ICDO3, Summary Stage 200	N0439	NA
CHG	Edit	Brain Molecular Markers, Summary Stage	N5041	NA
CHG	Edit	Circumferential Resection Margin (CF)	N3034	NA
CHG	Edit	Circumferential Resection Margin (CF)	N6748	NA
CHG	Edit	Class of Case, Prim Site, Hist, Beh, DX	N1373	CO
CHG*	Edit	Derived Summary Grade 2018 (NAACCR)	N7065	NA
CHG*	Edit	Derived Summary Grade 2018, Date of Diagnosis	N7066	NA
CHG	Edit	Derived Summary Stage 2018, Plasmid	N6398	SEE
CHG	Edit	Derived Summary Stage 2018, Plasmid	N6399	SEE v

**Import Objects Grid**

**Generates Report of Object**

Import Stop Close

# No Agency to IMPORT for a Minor Update

**Import Metafile**

Agencies  
 Fields  
 Messages  
 Tables  
 Edits  
 Edit Sets

Show status  
 New objects only  
 Changed objects only  
 Conflict resolution needed  
 All objects

Agencies match on Admin Code  
Edits match on EditTag  
Edit Sets match on EditSetTag  
Fields match on FieldNumber  
Messages match on MessageNumber  
Tables match on TableName

New/Changed objects from: NAACCR v25A Metafile.20241024.smf  
0 available for import

Status	Object	Record Key	Tag	Ag
--------	--------	------------	-----	----

Objects selected for import into: V25 Custom Metafile MMM 20240315.s  
0 selected for import

Status	Object	Record Key	Tag	Age
--------	--------	------------	-----	-----

Import Stop Close

We are moving in order down the MCO line.

Your agency does not exist in the standard metafile so this will be empty. Let's move on to Fields.



# Import Field Update

**Import Metafile**

Agencies  
 Fields  
 Messages  
 Tables  
 Edits  
 Edit Sets

Show status  
 New objects only  
 Changed objects only  
 Conflict resolution needed  
 All objects

Agencies match on Admin Code  
Edits match on EditTag  
Edit Sets match on EditSetTag  
Fields match on FieldNumber  
Messages match on MessageNumber  
Tables match on TableName

New/Changed objects from: NAACCR v25A Metafile.20241024.smf  
1 available for import

Status	Object	Record Key	Tag	Agency
CHG*	Field	Derived Summary Grade 2018 [# 197 1975	1975	SEER

Objects selected for import into: V25 Custom Metafile MMM 20240315.smf  
0 selected for import

Status	Object	Record Key	Tag	Agency
--------	--------	------------	-----	--------

Import Stop Close

We are moving in order down the MCO line.

# Import V25A Messages Updates

Import Metafile

Agencies  
 Fields  
 Messages  
 Tables  
 Edits  
 Edit Sets

Show status  
 New objects only  
 Changed objects only  
 Conflict resolution needed  
 All objects

Agencies match on Admin Code  
Edits match on EditTag  
Edit Sets match on EditSetTag  
Fields match on FieldNumber  
Messages match on MessageNumber  
Tables match on TableName

New/Changed objects from: NAACCR v25A Metafile.20241024.smf  
15 available for import

Status	Object	Record Key	Tag	Agency
CHG	Message	1073: If one race code = 88, all subse	1073	NAACCR
CHG	Message	1116: %F1 must equal "250" for this	1116	NAACCR
CHG	Message	7506: Conflict between Schema ID ar	7506	NAACCR
CHG	Message	8523: Race codes 04-17 take priority	8523	NAACCR
CHG	Message	8524: Race codes 16-17 take priority	8524	SEER
CHG	Message	8525: Race codes 20-32 take priority	8525	SEER
CHG	Message	8526: Race codes 01-32, 96-97 take p	8526	SEER
NEW	Message	8660: %V5 is not valid for %F5	8660	AJCC
NEW	Message	8661: Conflict between Schema ID ar	8661	NAACCR
NEW	Message	8662: %F5: %V5 not coded for %F4: %	8662	NAACCR
NEW	Message	8663: %F5: %V5 not consistent with %	8663	NAACCR
NEW	Message	8900: Codes 02-32, 96-97 take priori	8900	NAACCR
NEW	Message	8901: Race code 98 takes priority ove	8901	NAACCR
NEW	Message	8902: Review. Incisional biopsies onl	8902	NAACCR
NEW	Message	8903: %F2 must not be blank for cas	8903	NAACCR

Objects selected for import into: V25 Custom Metafile MMM 20240315.smf  
0 selected for import

Status	Object	Record Key	Tag	Agency
--------	--------	------------	-----	--------

Import Stop Close

We are moving in order down the MCO line.

# Import V25A Tables

Import Metafile

Agencies  
 Fields  
 Messages  
 Tables  
 Edits  
 Edit Sets

Show status  
 New objects only  
 Changed objects only  
 Conflict resolution needed  
 All objects

Agencies match on Admin Code  
Edits match on EditTag  
Edit Sets match on EditSetTag  
Fields match on FieldNumber  
Messages match on MessageNumber  
Tables match on TableName

New/Changed objects from: NAACCR v25A Metafile.20241024.smf  
6 available for import

Status	Object	Record Key	Tag	Agency
CHG	Table	AJCCIDV9STGP	AJCCIDV9:	COC
CHG	Table	EODRN2018	EODRN20	SEER
CHG	Table	FIGOSTAGE	FIGOSTAG	NAACCR
CHG	Table	REGID10	REGID10	NAACCR
CHG	Table	SCHEMAID_AJCCID	SCHEMAID	NAACCR
CHG	Table	SUMST1809	SUMST18:	SEER

Objects selected for import into: V25 Custom Metafile MMM 20240315.smf  
0 selected for import

Status	Object	Record Key	Tag	Agency
--------	--------	------------	-----	--------

View  
Diff

Import the updated **Tables** with dependencies!

(Review any other tables that may have populated here - if any. You may have removed these from your custom metafile.)

# Import V25A Edit Updates

Import Metafile

Agencies  
 Fields  
 Messages  
 Tables  
 Edits  
 Edit Sets

Show status  
 New objects only  
 Changed objects only  
 Conflict resolution needed  
 All objects

New/Changed objects from: NAACCR v25A Metafile.20241024.smf  
57 available for import

Status	Object	Record Key	Tag	Agency
CHG	Edit	_SYS AJCC ID (NAACCR)	N2815	NAACCR
CHG	Edit	_SYS Schema ID, Site, Histo, Sex (NA	N3069	NAACCR
CHG	Edit	Abstracted By (COC)	N0148	COC
CHG	Edit	Behavior ICD03, Summary Stage 200	N0439	NAACCR
CHG	Edit	Brain Molecular Markers, Summary S	N5041	NAACCR
CHG	Edit	Circumferential Resection Margin (CF	N3034	NAACCR
CHG	Edit	Circumferential Resection Margin (CF	N6748	NAACCR
CHG	Edit	Class of Case, Prim Site, Hist, Beh, DX	N1373	COC
CHG*	Edit	Derived Summary Grade 2018 (NAAC	N7065	NAACCR
CHG*	Edit	Derived Summary Grade 2018, Date	N7066	NAACCR
CHG	Edit	Derived Summary Stage 2018, Plasm	N6398	SEER
CHG	Edit	Derived Summary Stage 2018, Plasm	N6399	SEER
CHG	Edit	FIGO Stage, Gynecologic, Schema ID	N2880	NAACCR
CHG	Edit	Grade, Breast, Behavior ICD-O-3 (NA	N6464	NAACCR
CHG	Edit	High Risk Cytogenetics, Schema ID, F	N2996	NAACCR

Agencies match on Admin Code  
Edits match on EditTag  
Edit Sets match on EditSetTag  
Fields match on FieldNumber  
Messages match on MessageNumber  
Tables match on TableName

Objects selected for import into: V25 Custom Metafile MMM 20240315.smf  
0 selected for import

Import Stop Close

## Import updated standard edits with dependencies!

- Many edit-related changes as we advance.
- Watch out for how these changes may impact your previous customizations. If your customized edit is built from one of these, you may need to recreate the custom edit.
- Email: [cancerinformatics@cdc.gov](mailto:cancerinformatics@cdc.gov) for help.

# Import V25A Edit Sets

Import Metafile

Agencies  
 Fields  
 Messages  
 Tables  
 Edits  
 Edit Sets

Show status  
 New objects only  
 Changed objects only  
 Conflict resolution needed  
 All objects

Agencies match on Admin Code  
Edits match on EditTag  
Edit Sets match on EditSetTag  
Fields match on FieldNumber  
Messages match on MessageNumber  
Tables match on TableName

New/Changed objects from: NAACCR v25A Metafile.20241024.smf  
15 available for import

Status	Object	Record Key	Tag	Agency
CHG	Edit Set	AJCC Edits	NES0500	NAACCR
CHG	Edit Set	Canadian Council of Cancer Registrie	NES0127	CCCR
CHG	Edit Set	Central Example Edits	NES0800	NAACCR
CHG	Edit Set	Central: Vs25 NPCR Required - Consc	NES0149	NPCR
CHG	Edit Set	Central: Vs25 State Example - Incomi	NES0150	NAACCR
CHG	Edit Set	Hosp: Vs25 COC Required	NES0344	COC
CHG	Edit Set	Inter-registry Data Exchange - Abstra	NES0600	NAACCR
CHG	Edit Set	Inter-registry Data Exchange - Conso	NES0601	NAACCR
CHG	Edit Set	Path Items	NES0052	NAACCR
CHG	Edit Set	Quality Control Edits-Central Registr	NES0003	NAACCR
CHG	Edit Set	SEER: Hospital Edits	NES0445	SEER
CHG	Edit Set	SEER: Vs 25 Transmit Edits	NES0334	SEER
CHG	Edit Set	SSDI Valid Value Edits	NES0502	NAACCR
NEW	Edit Set	test	1	AJCC
CHG	Edit Set	Vendor_SYS Edits	NES0351	NAACCR

Objects selected for import into: V25 Custom  
0 selected for import

View  
Diff

Import Stop Close

**Tip: For some users it is better to recreate your custom edit set. This will guarantee that you have the latest version of all dependencies.**

**Edit Set Import can vary by user agency.**

- **Add only the edit sets you want or add them all.**
- **New edit sets targeted to specific tasks.**
- **Be careful not to replace your custom edit set with a standard edit set (importance of renaming your custom objects)**

If you are not sure what to do here, contact:  
[cancerinformatics@cdc.gov](mailto:cancerinformatics@cdc.gov)

# V25A METAFILE VERSION DOCUMENTATION

- Documentation is one of the last metafile tasks before implementation in central registry software or distribution to reporting facilities
- Within the Edit Writer **Tools** menu, there is a feature for **Metafile Version and Comment**
- Facilitates communication among reporting facilities, the central registry, vendors, and edits staff who respond to queries and concerns about edits

Metafile Version and Comment

**Content Version**

MMM\_V25A Custom Metafile 20241025

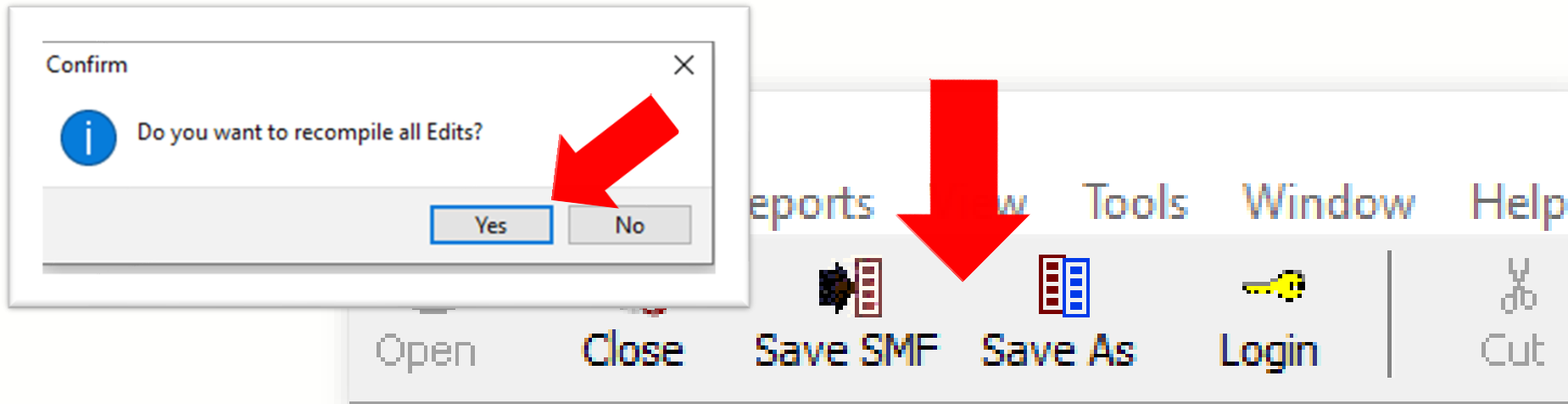
**Metafile Comment**

Contact MMM:  
Contact info for the Agency's Metafile Admin

OK Cancel

This will show on validation reports in GenEDITS Plus!

# RECOMPILE EDITS AND SAVE YOUR METAFILE (SMF)



After recompiling and saving your V25A custom metafile with a unique name, your updated V25A metafile (once your custom V25 metafile) is ready for testing/distribution!

*Note: **Save SMF** will save over the copy you originally opened. **Save AS** will save your changes as a new metafile. Either way, update the metafile name to V25A with agency code and today's date. ex: `V25A_MMM_Metafile20241025.smf`*

# Resources

## ❑ Edits Software Downloads:

- <https://www.cdc.gov/cancer/npcr/tools/edits/edits50.htm>

## ❑ Knowledge Base:

- <https://app.onedesk.com/app-od/o-regplus/knowledge-base-2?customerAccess=>

## ❑ Metafile and Data Dictionaries:

- <https://www.naaccr.org/standard-data-edits/>

## ❑ Review the EditWriter Help documentation

- Now available through the Knowledge Base
- <https://app.onedesk.com/app-od/o-regplus/knowledge-base-2?customerAccess=>



# Thank you!

Go to the official federal source of cancer prevention information:  
[www.cdc.gov/cancer](http://www.cdc.gov/cancer)



Division of Cancer Prevention and Control  
Reliable. Trusted. Scientific.

*The findings and conclusions in this report are those of the authors and do not necessarily represent the official position of the Centers for Disease Control and Prevention.*