

# The Effect of Advances in Lung Cancer Treatment on Population Mortality

**Nadia Howlader, PhD**

**Surveillance Research Program, DCCPS**

**NAACCR Summer Forum 2021**

**June 15, 2021**

ORIGINAL ARTICLE

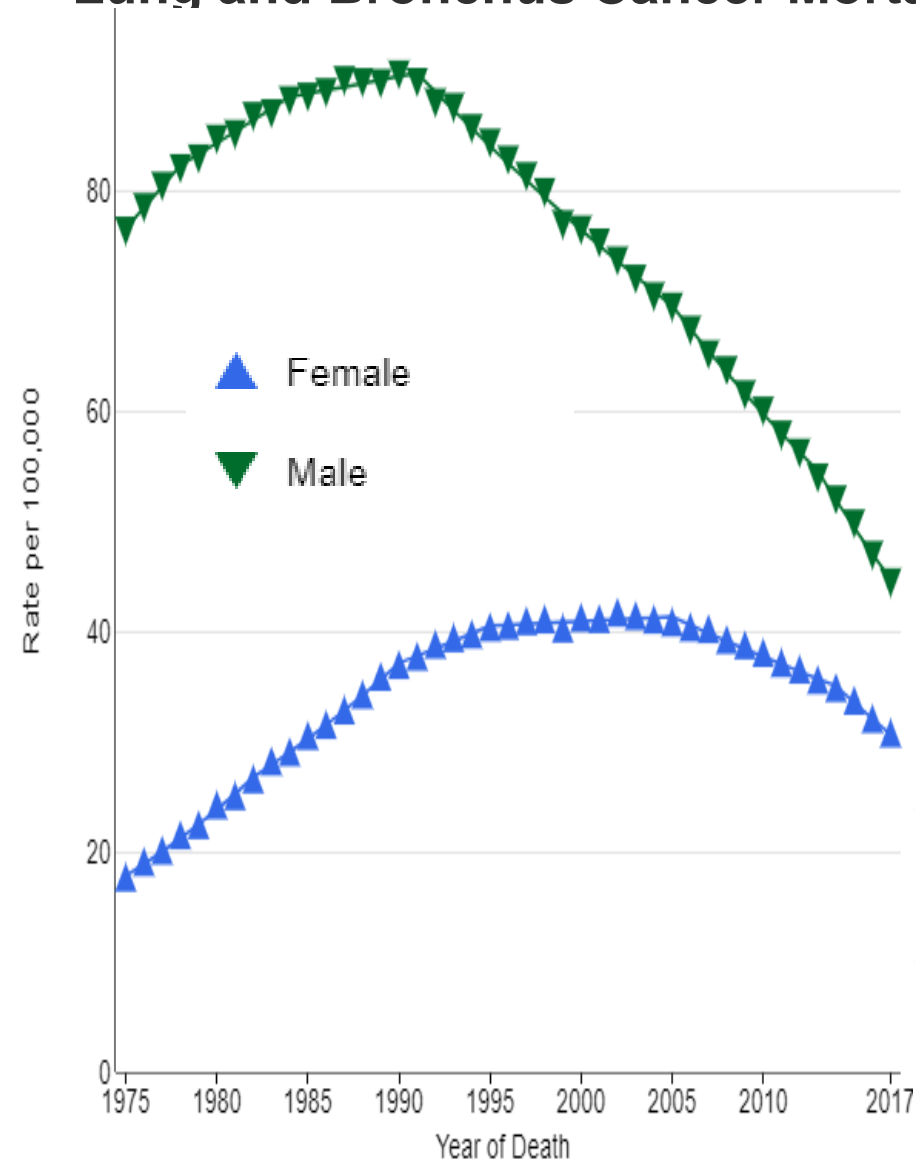
# The Effect of Advances in Lung-Cancer Treatment on Population Mortality

Nadia Howlader, Ph.D., Gonçalo Forjaz, D.V.M., Meghan J. Mooradian, M.D.,  
Rafael Meza, Ph.D., Chung Yin Kong, Ph.D., Kathleen A. Cronin, Ph.D.,  
Angela B. Mariotto, Ph.D., Douglas R. Lowy, M.D., and Eric J. Feuer, Ph.D.

N ENGL J MED 383;7 NEJM.ORG AUGUST 13, 2020

# Background

## Lung and Bronchus Cancer Mortality, US. 1975-2017



- Rapidly declining lung cancer mortality rates
- ACS reported largest one-year drop in cancer mortality; decline in deaths from lung cancer drove the record drop
- This captures overall trend from all subtypes combined
- How much do specific lung cancer subtype contribute to this overall trend in mortality?

ACS = American Cancer Society

# Study Aims

# Study Aims

How do the two major subtypes contribute to the overall mortality decline?

- *Small cell (SCLC) and non-small cell lung cancer (NSCLC)*

Is the decline in the mortality more related to incidence or survival?

- *Mortality is influenced by both incidence and survival*

# Study Aims

How do the two major subtypes contribute to the overall mortality decline?

- *Small cell (SCLC) and non-small cell lung cancer (NSCLC)*

Is the decline in the mortality more related to incidence or survival?

- *Mortality is influenced by both incidence and survival*

# Study Design

# Study Design: Analysis Cohort

Lung and bronchus cancer cases in SEER-18 areas during 2001-2016

- SEER-18 areas cover 28 percent of US population
- SCLC and NSCLC defined based on Lewis et al.<sup>1</sup>
- Coding challenges with classification of subtypes did not allow up to go back in time before 2001

<sup>1</sup> Lewis et al. Cancer 2014

# Study Design: Methods

Use incidence-based mortality (IBM) technique to partition subtype-specific mortality trends

- Because regular death certificate mortality do not have subtypes
- Details to follow in a few slides
- Joinpoint to assess IBM trend changes over time

Assess incidence and survival trends to understand IBM trends

- Estimate age-adjusted incidence rates by subtypes
  - Further adjusted for reporting delay
  - Joinpoint to assess incidence trend changes over time
- Estimate two-year lung cancer-specific survival by subtypes
  - Relative survival approach

# Incidence-Based Mortality (IBM)

# Why Do We Need Incidence-Based Mortality (IBM)?

- Information on lung cancer subtypes not available on death certificate mortality data, but available from SEER data on incident cases
- IBM provides a resource to address this limitation in death certificate mortality data by linking SEER incident cases to mortality records
- Therefore, we can use information on deaths in SEER cases to reconstruct mortality curves using IBM

# What Is Incidence-Based Mortality (IBM)?

## IBM is a rate:

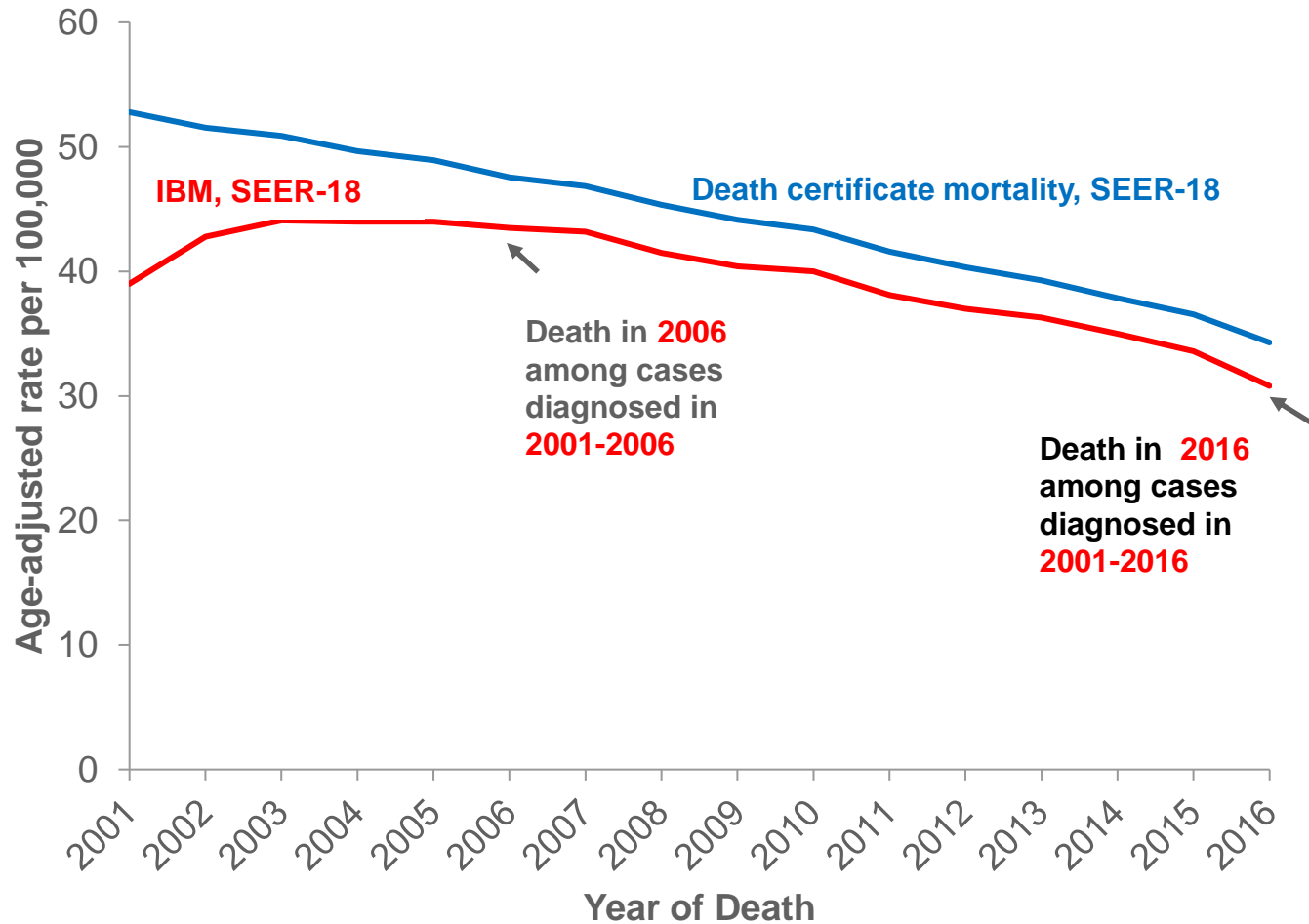
Death among incident cases by subtypes in year 'x'

---

General population in SEER areas in year 'x'

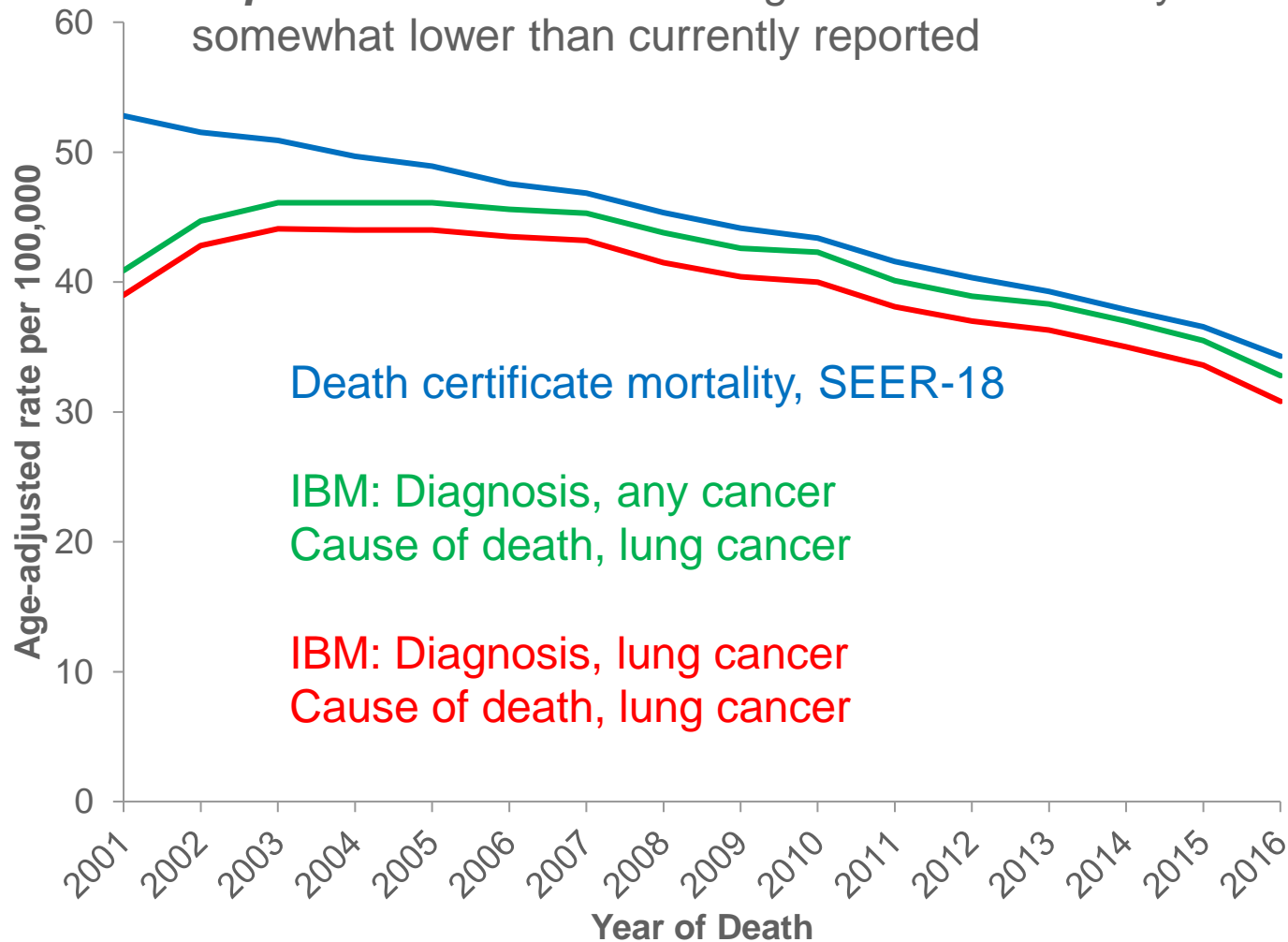
- IBM rates are valid for a shorter period of time than death certificate mortality rates
- Require 'n' years of data on incident cases prior to each year of mortality data to account for 'burn-in' period

# Death Certificate Mortality vs. Incidence-based Mortality (IBM): Lung and Bronchus



# IBM likely represent lung cancer mortality more accurately than using death certificate mortality

**Implication:** deaths from lung cancer are actually somewhat lower than currently reported



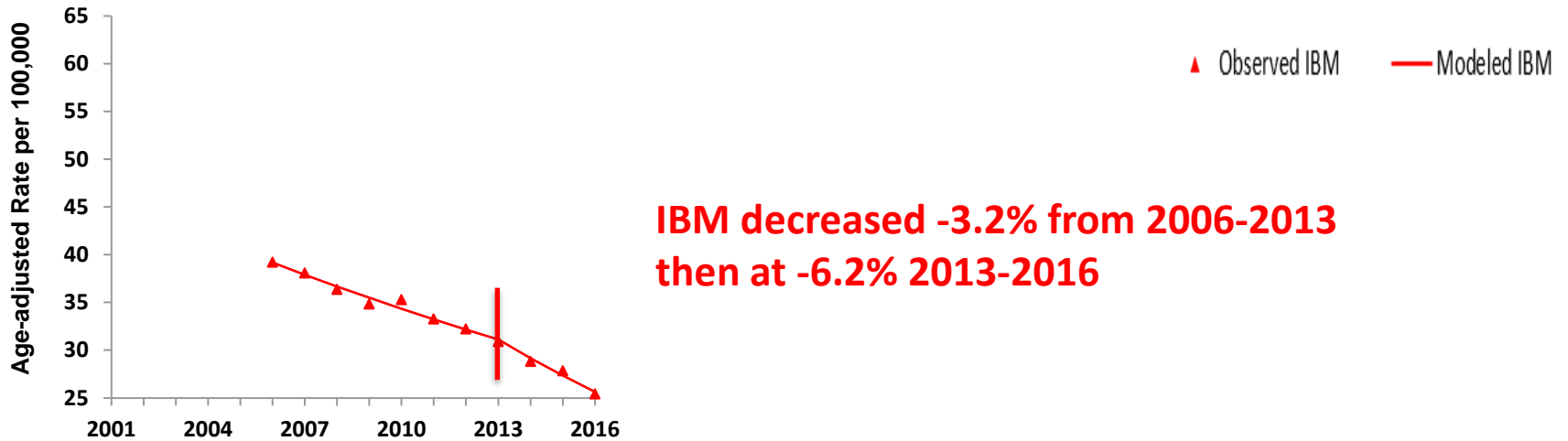
# Results

# Non-Small Cell Lung Cancer

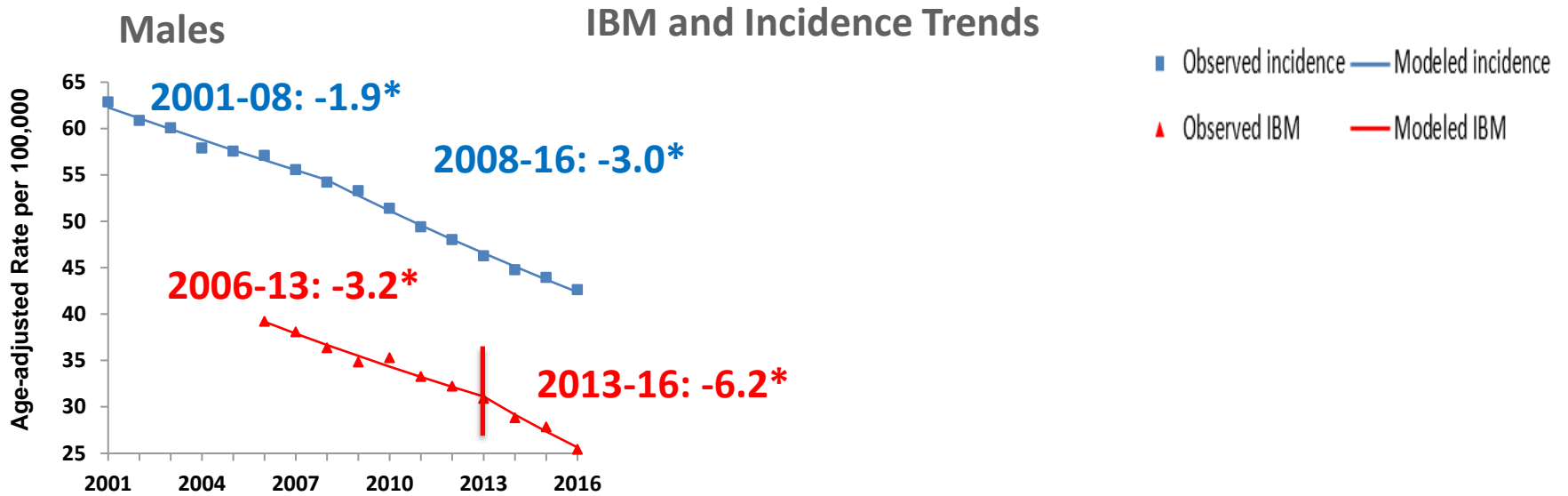
# NSCLC: IBM, Incidence, and Survival Trends, SEER-18

## IBM and Incidence Trends

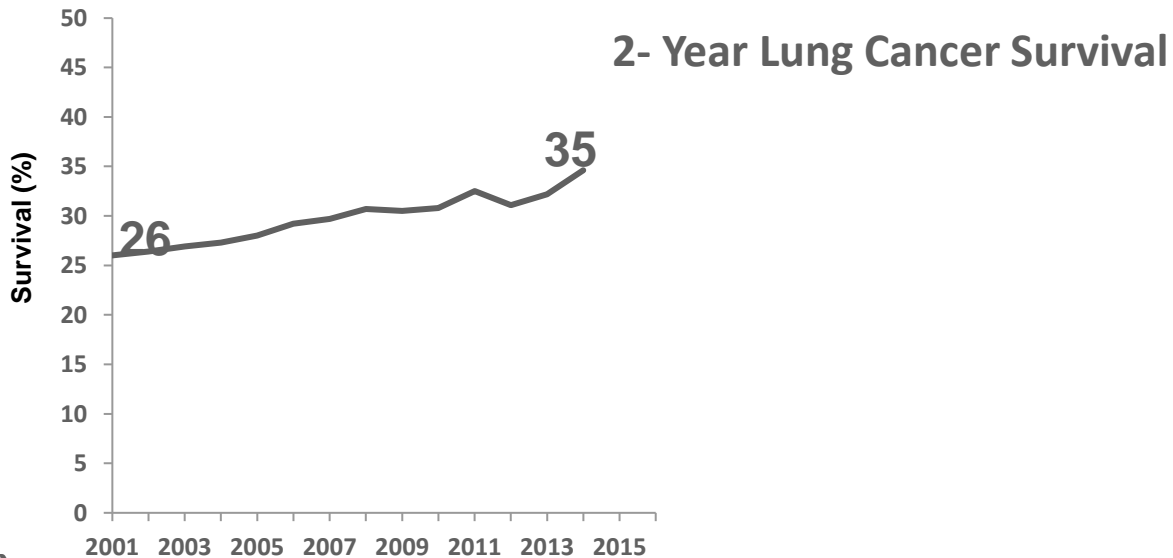
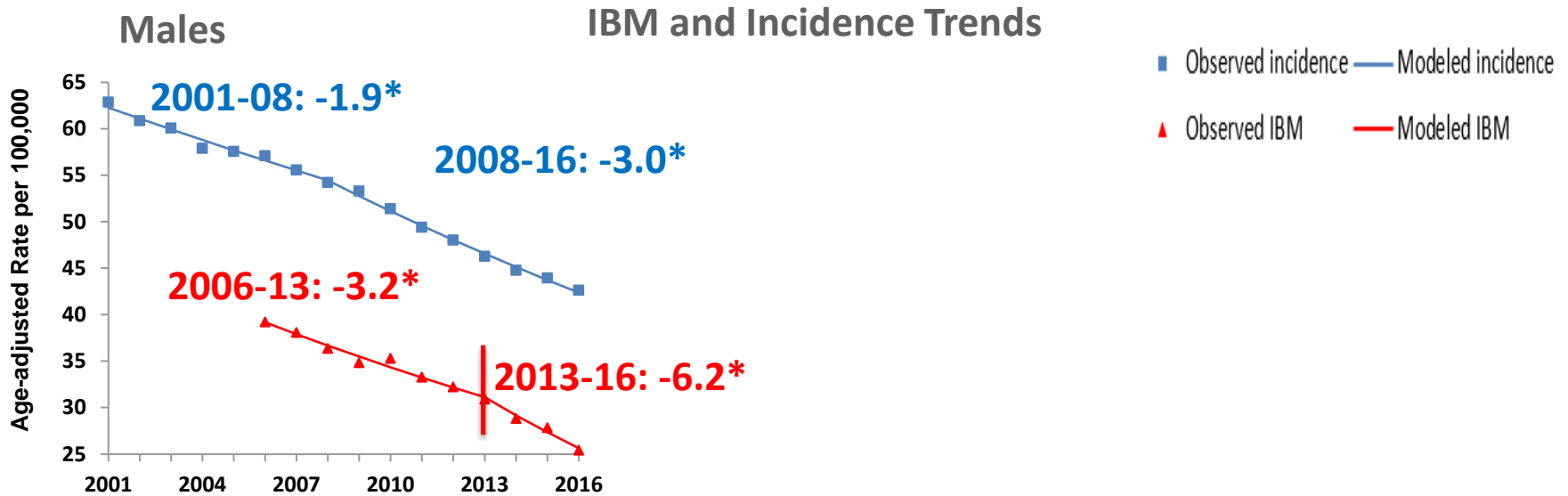
Males



# NSCLC: IBM, Incidence, and Survival Trends, SEER-18



# NSCLC: IBM, Incidence, and Survival Trends, SEER-18

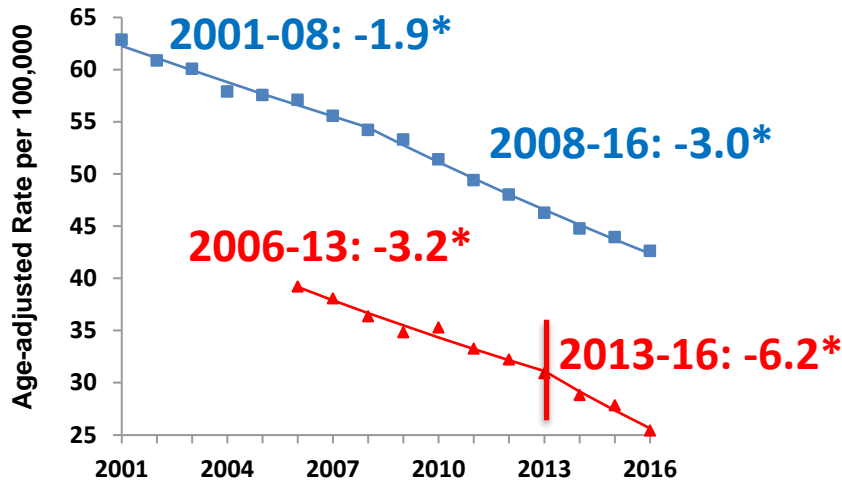


# NSCLC: IBM, Incidence, and Survival Trends, SEER-18

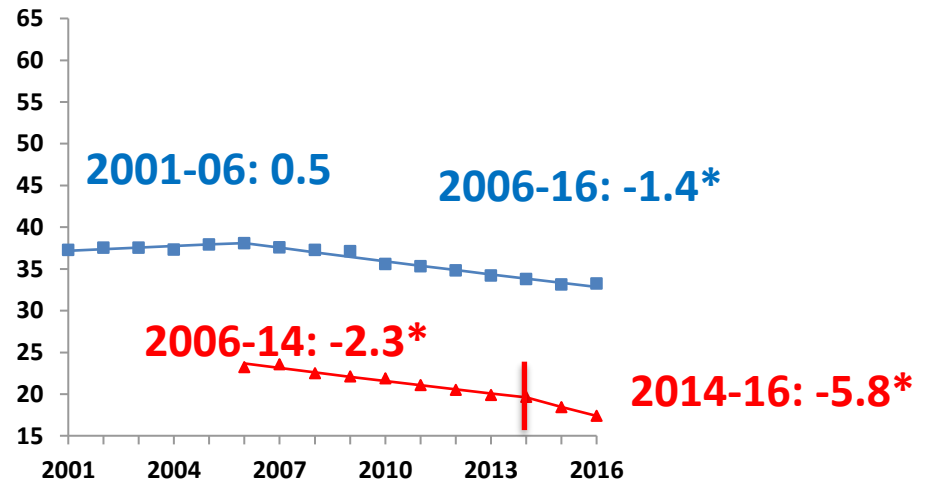
## IBM and Incidence Trends

■ Observed incidence — Modeled incidence  
▲ Observed IBM — Modeled IBM

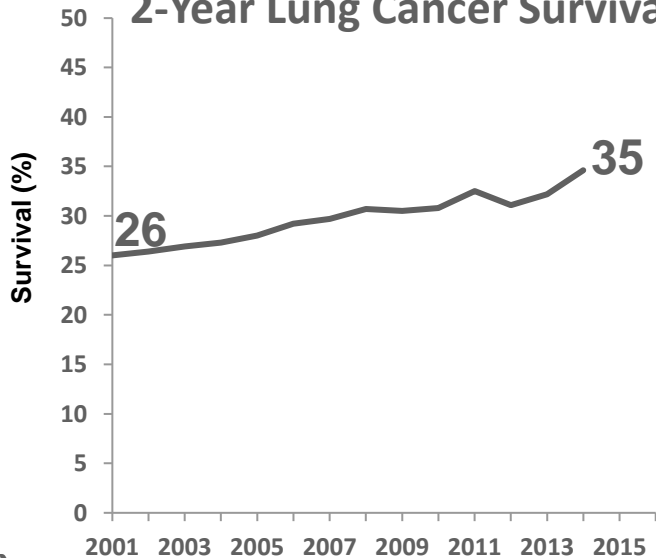
### Males



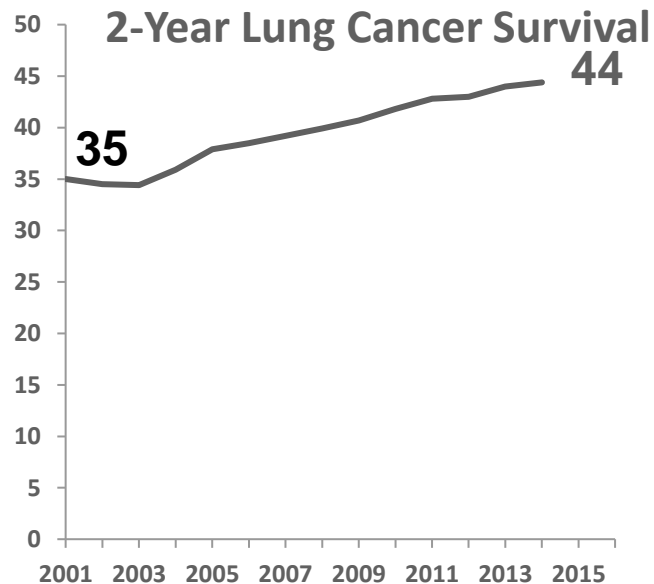
### Females



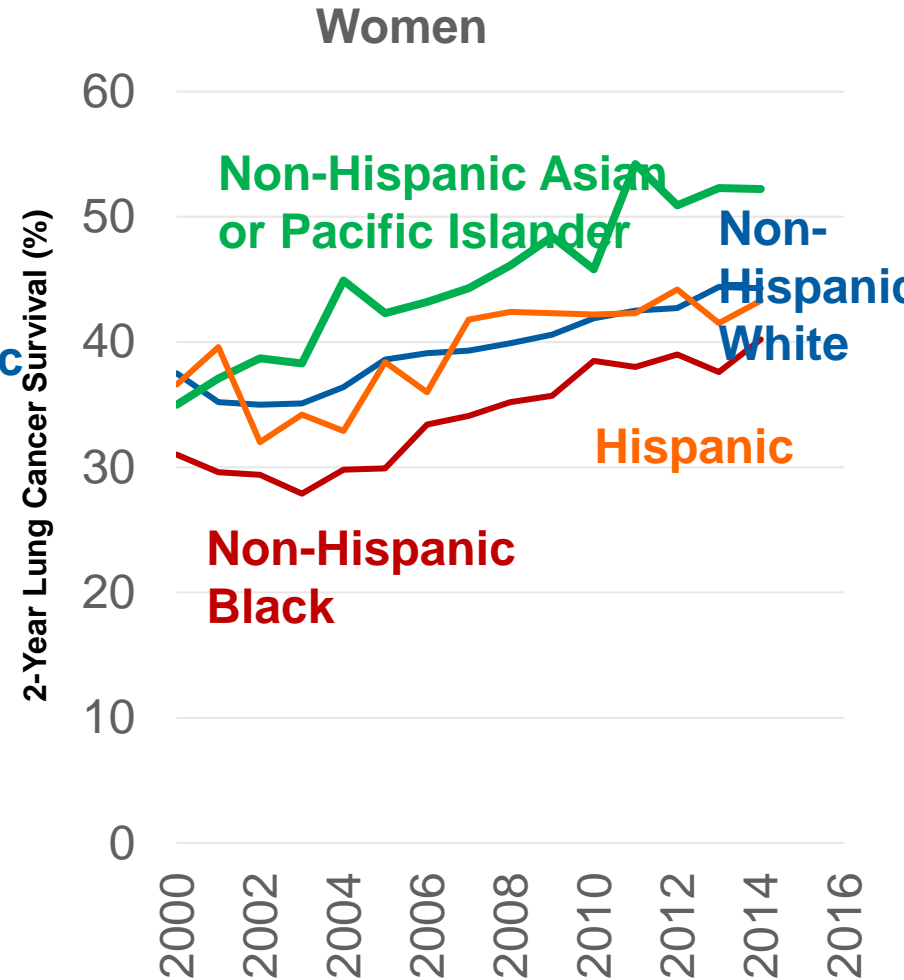
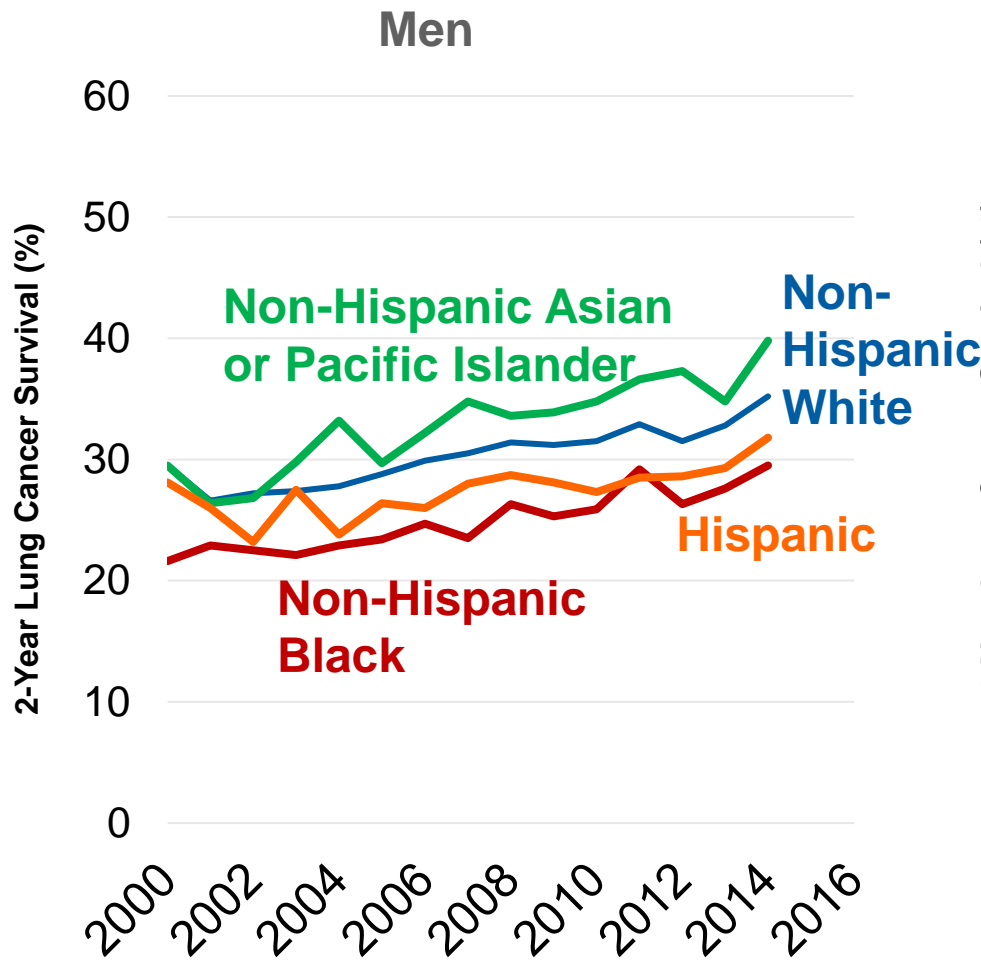
### 2-Year Lung Cancer Survival



### 2-Year Lung Cancer Survival



# NSCLC Survival Trends by Race-ethnicity and Gender, SEER-18 excluding Alaska, 2000-2014



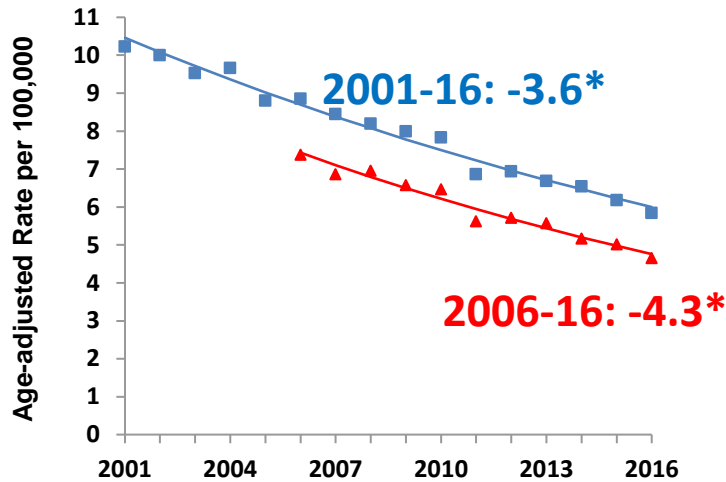
# Small Cell Lung Cancer

# SCLC: IBM, Incidence, and Survival Trends, SEER-18

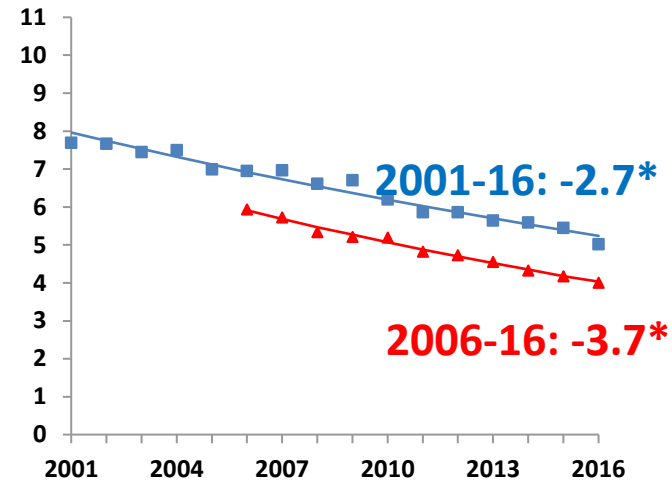
## IBM and Incidence Trends

- Observed incidence — Modeled incidence
- ▲ Observed IBM — Modeled IBM

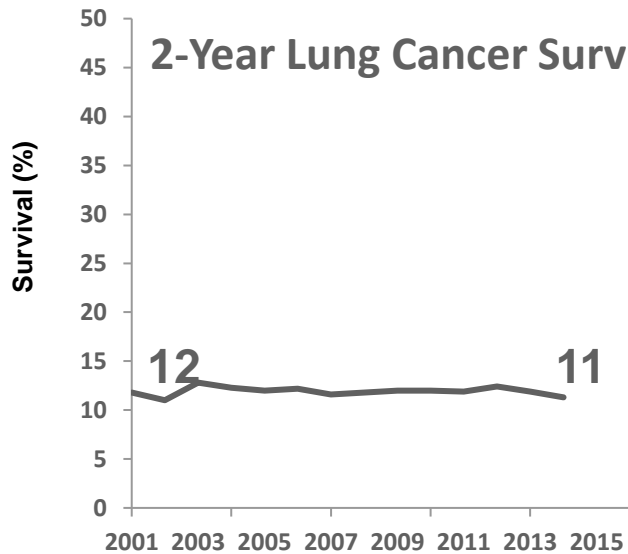
### Males



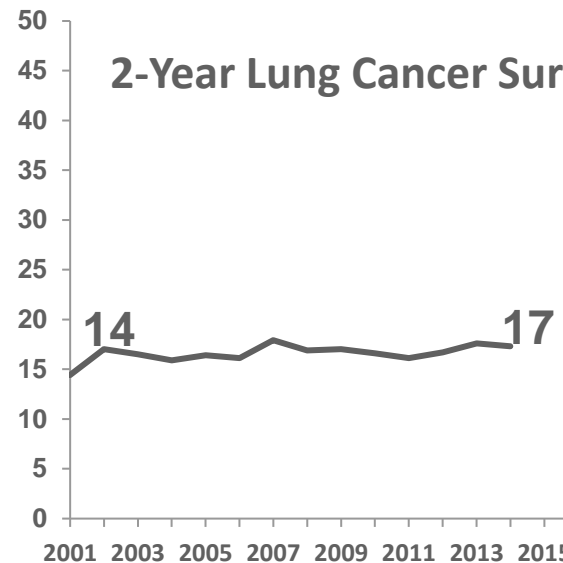
### Females



### 2-Year Lung Cancer Survival



### 2-Year Lung Cancer Survival



# Interpretation of the trends

# Could other factors explain the sharper drop in NSCLC mortality?

## Lung cancer screening?

- No because screening rates remained low and stable through out the study period

## Declining smoking rates?

- Undoubtedly, the declining smoking rates contribute to the declining incidence and mortality rates for lung cancer over time,
- But given the timing and magnitude of the drop, smoking alone did not explain

## Targeted therapies?

- It correlated with several targeted therapies that were
- Approved by the U.S. Food and Drug Administration in 2013

# Conclusions

# Conclusions

SCLC: steady decline in mortality explained entirely by lower incidence (potentially attributable to reduced tobacco use)

NSCLC: steady decline initially followed by rapid decline in 2013-2016

- Mainly explained by dissemination of targeted therapies approved in 2013 for stage IV EGFR+NSCLC as first line therapy
- Estimates suggest possible population level impacts of targeted therapies

SEER currently do not have data on individual level drug use but has started a collaboration with Department of Energy to

- Enable collection of cancer surveillance data from multiple sources including detailed treatment, biomarkers along with decrease the interval for reporting
- Create detailed longitudinal patient trajectories

Thank you!

Questions:  
[howlader@mail.nih.gov](mailto:howlader@mail.nih.gov)