

CINA Deluxe Data Quality Profile

Date DQP produced: April 23, 2018

Variable examined: CS Tumor Size (NAACCR Data Item #: 2800)

Filters: Invasive cases only; excluded lymphoma, leukemia, DCO, and autopsy cases

Diagnosis Years covered: 2010-2014

Cancer Sites: Colorectal, lung, female breast, kidney, and cervix

Database citation: CINA Analytic File, 1995-2014, Expanded Races

Number of Registries included: 47 State Registries plus DC Cancer Registry (Three registries, Minnesota, Nevada, and New Mexico, that did not meet at least one year of the NAACCR data quality between years 2010 and 2014 were excluded.)

Data Dictionary: NAACCR Data Dictionary 16 (<http://datadictionary.naacr.org/>*)

*Access V16 by selecting “16” from the dropdown box at the top left hand corner of the page.

Members: Meichin Hsieh, Bin Huang, Ahmedin Jemal, Carol Kruchko, Baozhen Qiao, Recinda Sherman, Helmneh Sineshaw, Brad Wohler, Manxia Wu, Xiaocheng Wu, Qingzhao Yu

Contact Information:

Helmneh Sineshaw, MD, MPH
Phone: (404) 982-3628
Email: helmneh.sineshaw@cancer.org

Technical Notes:

1. The percentage of unknown CS tumor size includes unknown (code 999) or blank values.
2. Upper Whisker: extends to largest data point within the boundary of $Q3 + 1.5 * (Q3 - Q1)$.
3. Diagnostic confirmation: Microscopic confirmed includes positive histology, positive cytology, and positive microscopic confirmation, method not specified.
4. Type of reporting source: Hospital includes hospital inpatient, radiation treatment centers/medical oncology centers, and other hospital outpatient units/surgery centers.

5. Urban/Rural 2013: The definition of metropolitan area is based on county using 2013 Rural/Urban Continuum Code. Metropolitan area include county metro area with population \geq 1million, county metro area with population between 25,000 and 1 million, and county metro area with population $<$ 25,000.

Table 1. Unknown CS tumor size by cancer site, Years 2010-2014 combined.

	Colorectum	Lung	Breast	Kidney	Cervix
Registry Level					

25-75% Percentile (IQR)	19.6%-22.9%	19.1%-24.1%	3.0%-5.6%	3.7%-6.3%	28.5%-37.0%					
Minimum	16.0%	15.0%	1.7%	2.4%	18.6%					
Mean	21.6%	22.0%	4.7%	5.2%	33.2%					
Median	20.8%	21.1%	3.9%	4.7%	31.8%					
Maximum	30.5%	34.2%	15.2%	14.8%	55.5%					
Upper Whisker ¹	27.8%	31.6%	9.5%	10.2%	49.8%					
# outside of upper whisker	4	3	2	1	2					
All cases combined	Total Count	% Unk	Total Count	%Unk	Total Count	% Unk	Total Count	% Unk	Total Count	%Unk
Sex										
Male	341,296	22.9%	538,147	22.9%	~	~	161,535	5.8%	~	~
Female	310,883	21.3%	480,951	21.1%	1,102,424	5.2%	95,091	5.8%	59,830	35.6%
Race										
White	535,216	21.4%	874,592	21.9%	914,604	4.9%	214,579	5.8%	45,670	34.6%
Black	81,779	24.3%	109,842	22.5%	129,919	6.3%	31,958	5.5%	9,705	39.6%
AI/AN	3,907	23.9%	5,389	24.6%	5,684	6.6%	2,144	5.7%	541	32.9%
Asian or Pacific Islander	24,055	22.9%	25,317	22.7%	41,991	4.6%	5,556	4.8%	2,830	32.2%
Unknown	7,222	45.3%	3,958	30.1%	10,226	19.3%	2,389	7.8%	1,084	51.8%
Age										
00-49 years	66,074	21.6%	39,149	23.0%	210,752	4.9%	40,291	3.4%	29,675	31.5%
50-64 years	202,319	23.0%	288,627	22.0%	406,364	4.7%	95,079	4.4%	18,449	36.9%
65-79 years	238,673	20.5%	495,941	20.5%	357,521	4.7%	93,579	6.1%	8,852	42.0%
80+ years	145,113	23.8%	195,381	25.9%	127,787	8.6%	27,677	12.9%	2,854	50.9%
Dx Confirmation²										
Microscopic confirmed	636,175	20.8%	928,101	20.4%	1,092,870	4.7%	232,578	4.7%	58,733	34.8%
Non-microscopic confirmed	10,968	67.2%	72,072	25.5%	5,558	43.1%	21,964	9.7%	423	62.6%
Unknown	5,036	95.1%	18,925	89.1%	3,996	92.5%	2,084	86.6%	674	93.2%
SEER Summary Stage										
Local	249,907	18.4%	202,136	4.9%	700,555	1.8%	174,802	1.6%	25,644	27.5%
Regional	226,424	7.7%	236,013	12.1%	310,293	3.3%	36,379	2.6%	21,479	30.9%
Distant	134,893	35.1%	526,683	26.9%	64,976	21.2%	35,907	15.0%	8,911	46.4%
Unknown	40,955	81.4%	54,266	82.8%	26,600	78.8%	9,538	59.4%	3,796	92.0%
Type of reporting source³										
Hospital	633,334	20.7%	994,102	20.7%	1,078,611	4.5%	253,453	5.1%	58,025	34.3%
Non-hospital	18,845	68.2%	24,996	77.3%	23,813	38.6%	3,173	57.1%	1,805	78.5%
Metro/Non-Metro 2013⁴										
Metro	533,804	22.0%	822,496	21.8%	939,848	5.1%	212,156	5.7%	50,480	35.8%
Non-Metro	118,067	22.7%	196,280	23.3%	161,935	5.5%	44,356	6.3%	9,311	34.8%
Unknown	308	57.1%	322	39.8%	641	34.8%	114	14.9%	39	66.7%
Surgery										
No	123,618	62.1%	785,995	26.1%	122,528	26.4%	60,173	16.5%	28,580	44.9%
Yes	519,967	11.6%	215,101	3.0%	970,921	2.0%	194,375	1.8%	30,322	25.3%
Unknown	8,594	85.2%	18,002	75.4%	8,975	63.6%	2,078	63.0%	928	89.2%

Figure 1a
% Unknown CS Tumor Size by Registry
Colorectal Cancer 2010-2014: All Stage

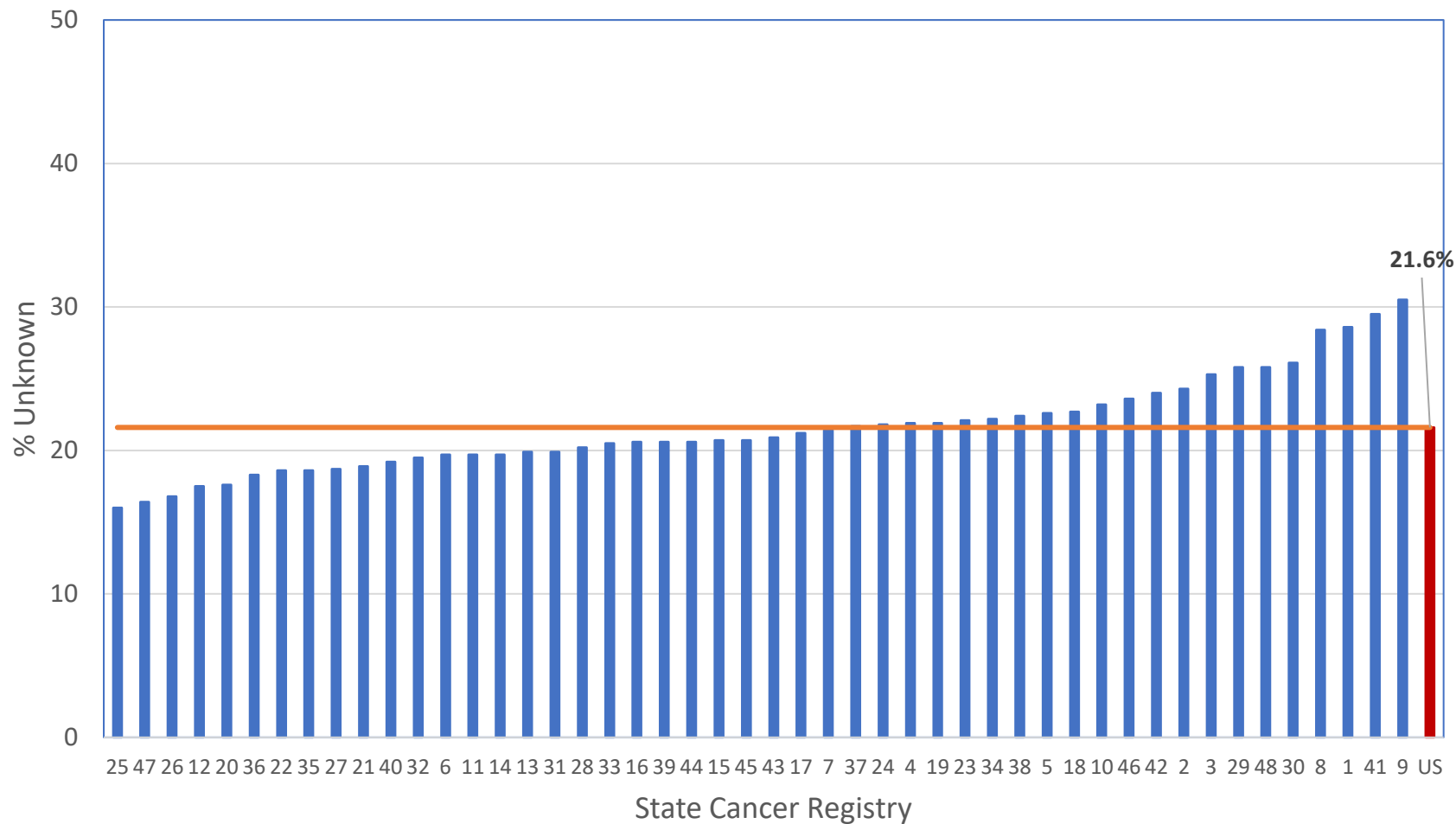


Figure 1b
% Unknown CS Tumor Size by Registry
Locoregional Colorectal Cancer 2010-2014

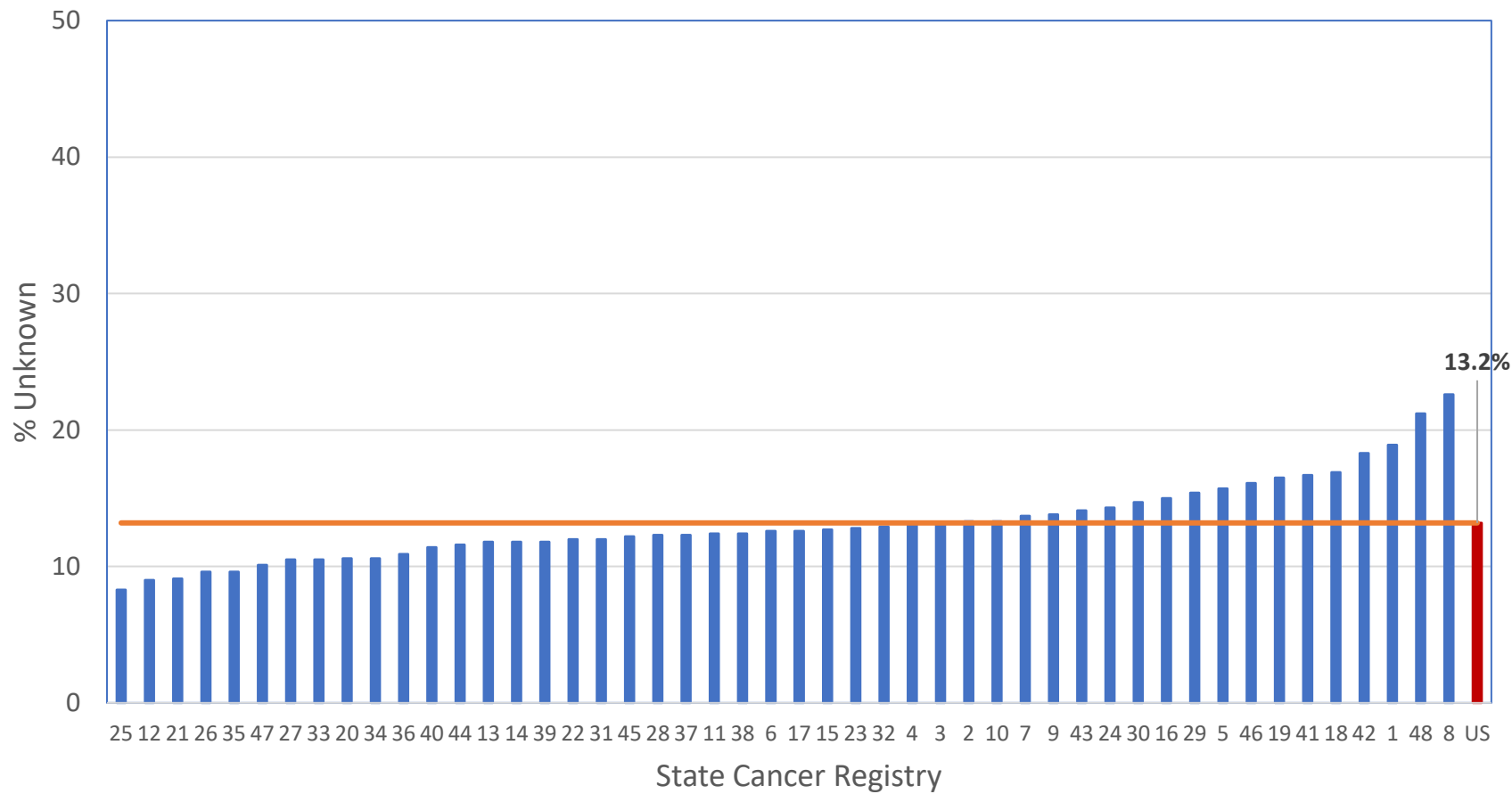


Figure 2a
% Unknown CS Tumor Size by Registry
Lung Cancer 2010-2014: All Stages

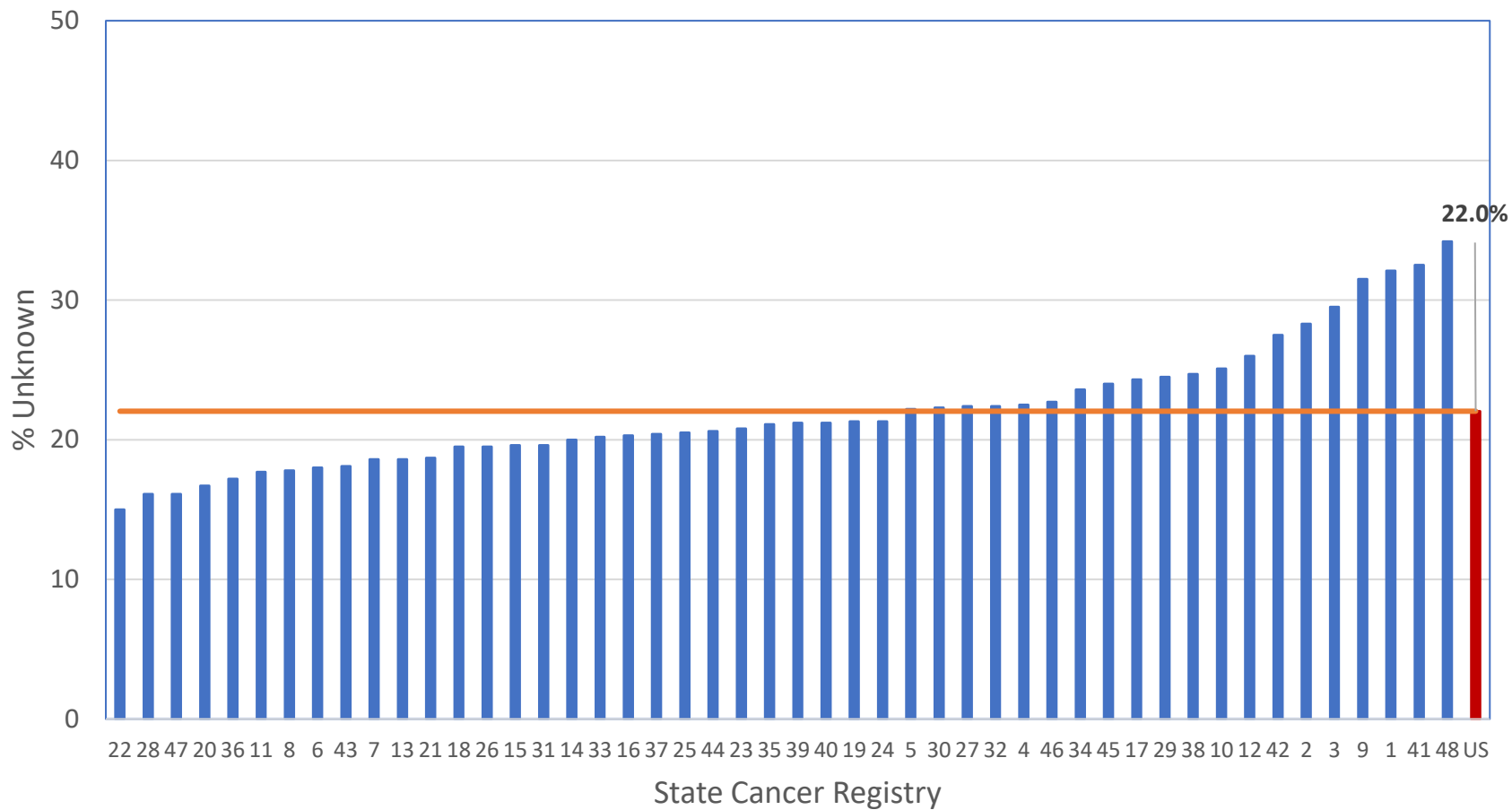


Figure 2b
% Unknown CS Tumor Size by Registry
Locoregional Lung Cancer 2010-2014

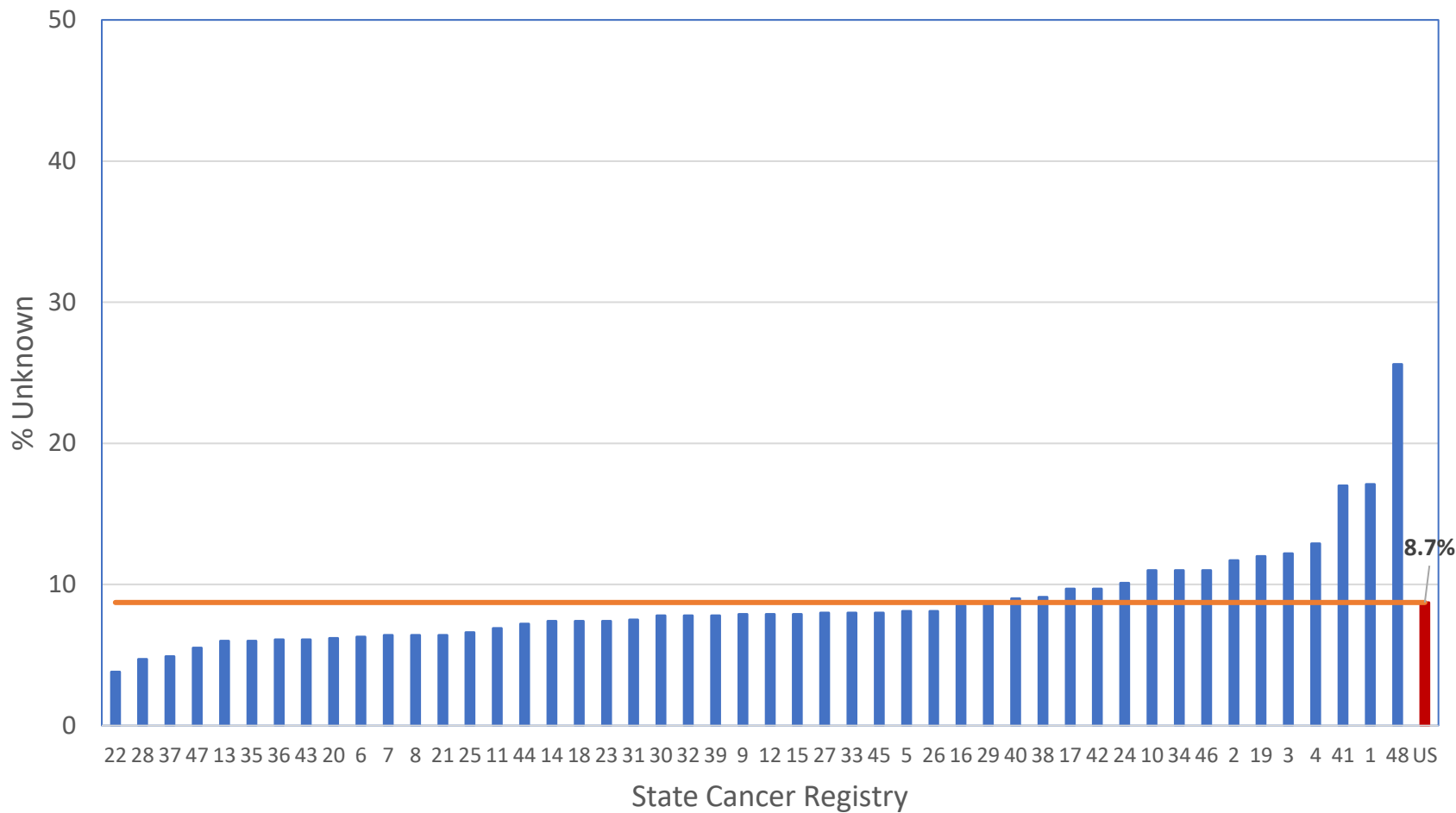


Figure 3a
% Unknown CS Tumor Size by Registry
Female Breast Cancer 2010-2014: All Stages

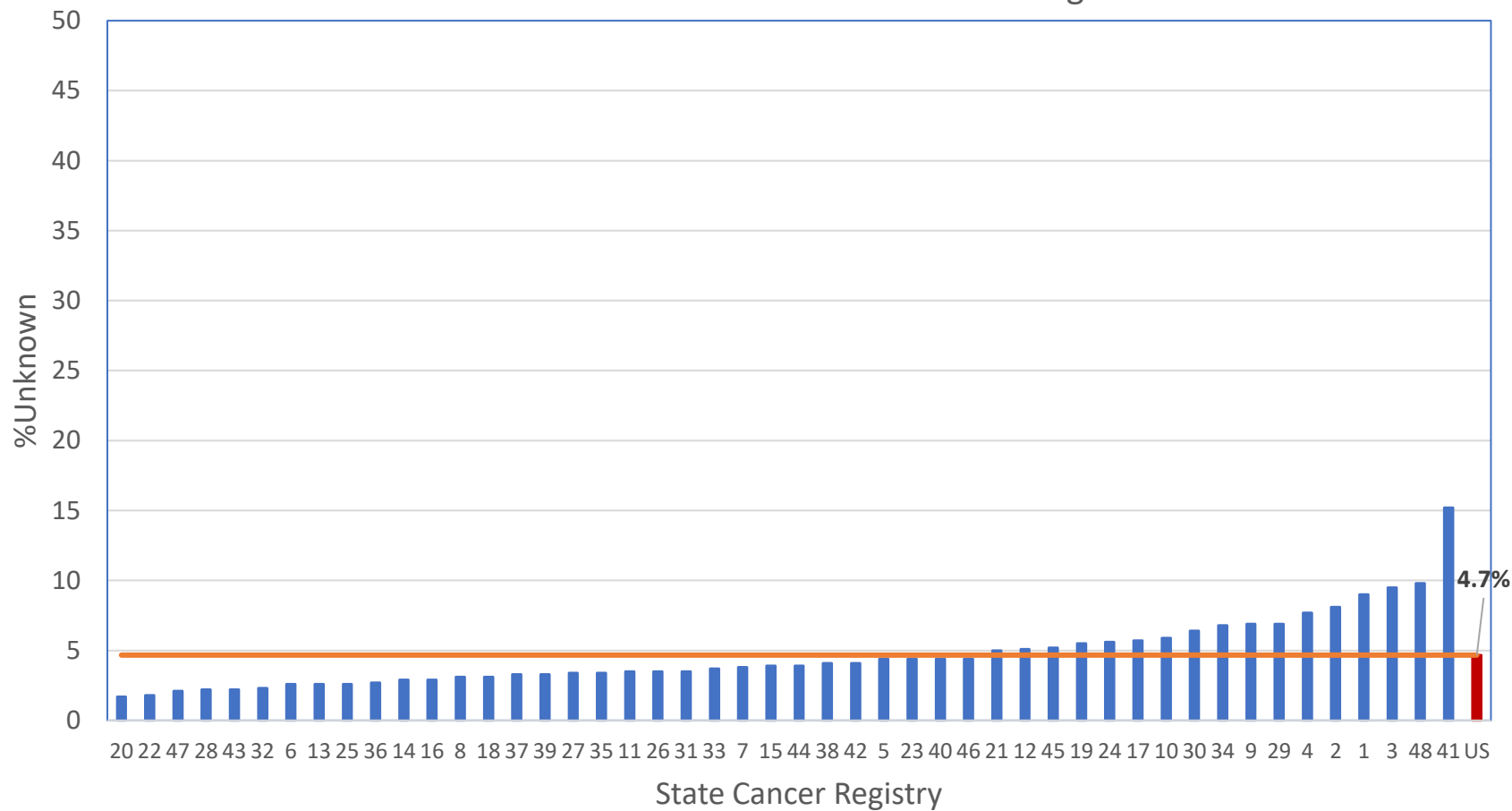


Figure 3b
% Unknown CS Tumor Size by Registry
Locoregional Female Breast Cancer 2010-2014

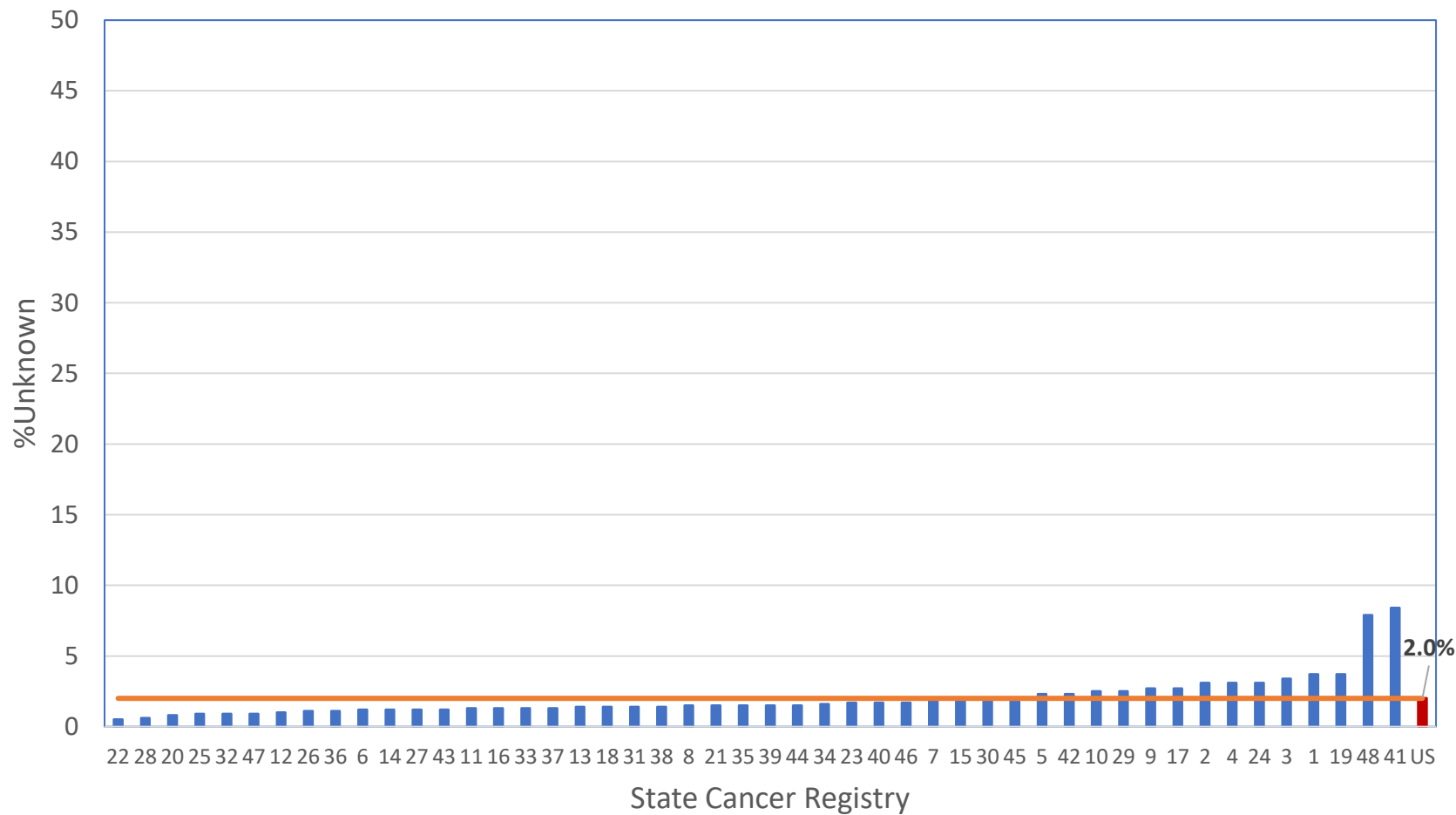


Figure 4a
% Unknown CS Tumor Size by Registry
Kidney Cancer 2010-2014: All Stages

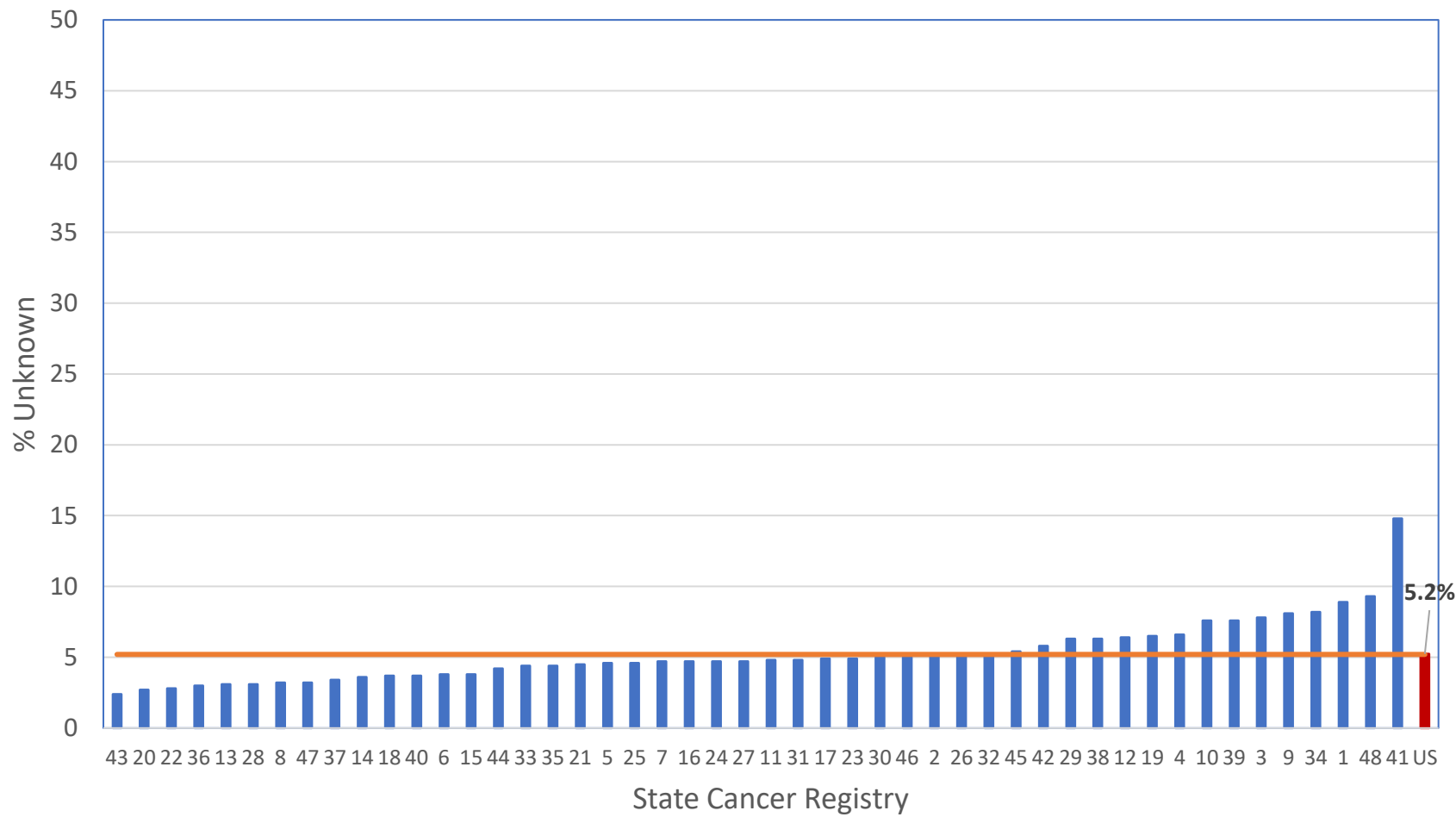


Figure 4b
% Unknown CS Tumor Size by Registry
Locoregional Kidney Cancer 2010-2014

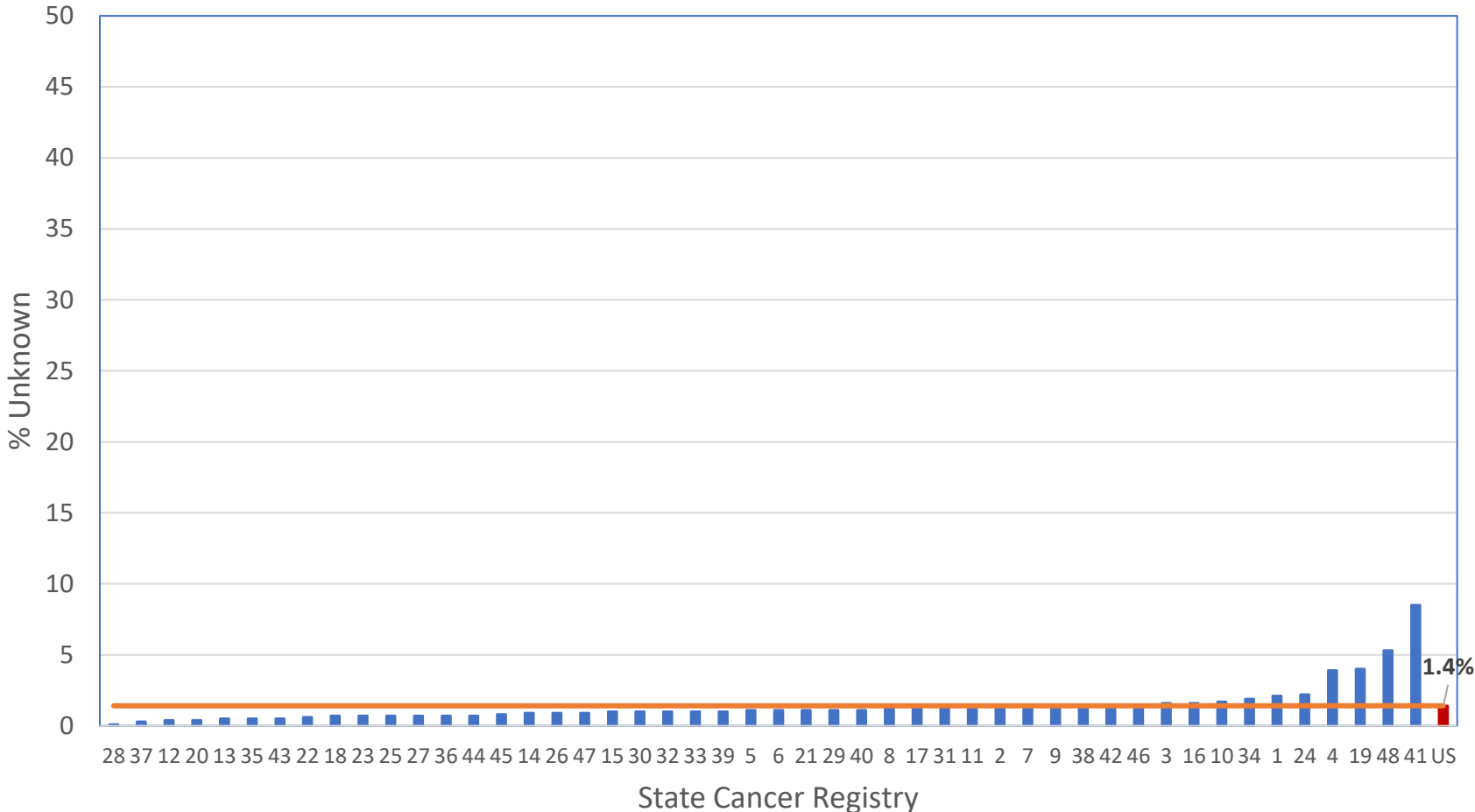


Figure 5a
% Unknown CS Tumor size by Registry
Cervical Cancer 2010-2014: All Stages

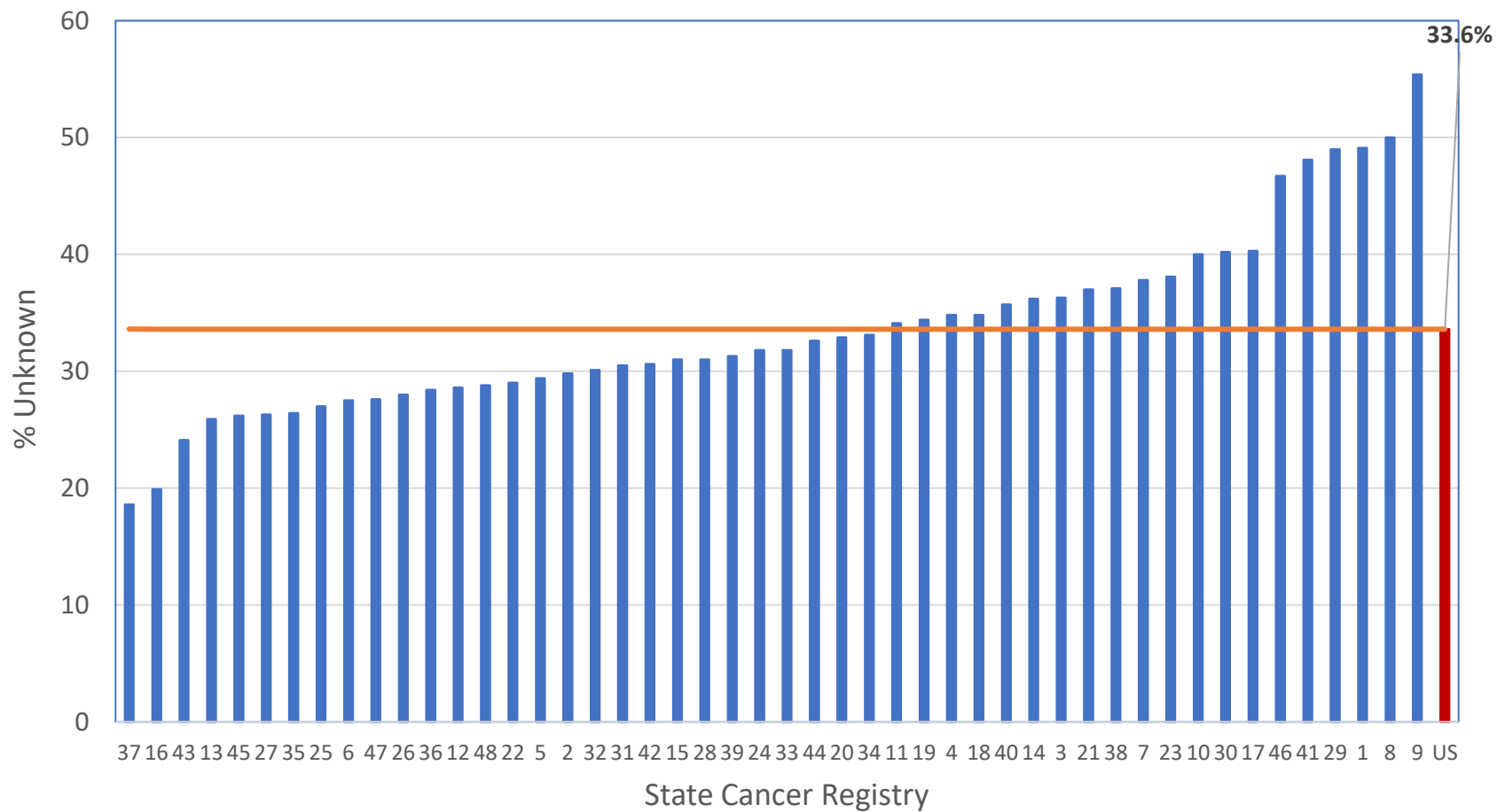


Figure 5b
% unknown CS Tumor size by Registry
Locoregional Cervical Cancer 2010-2014

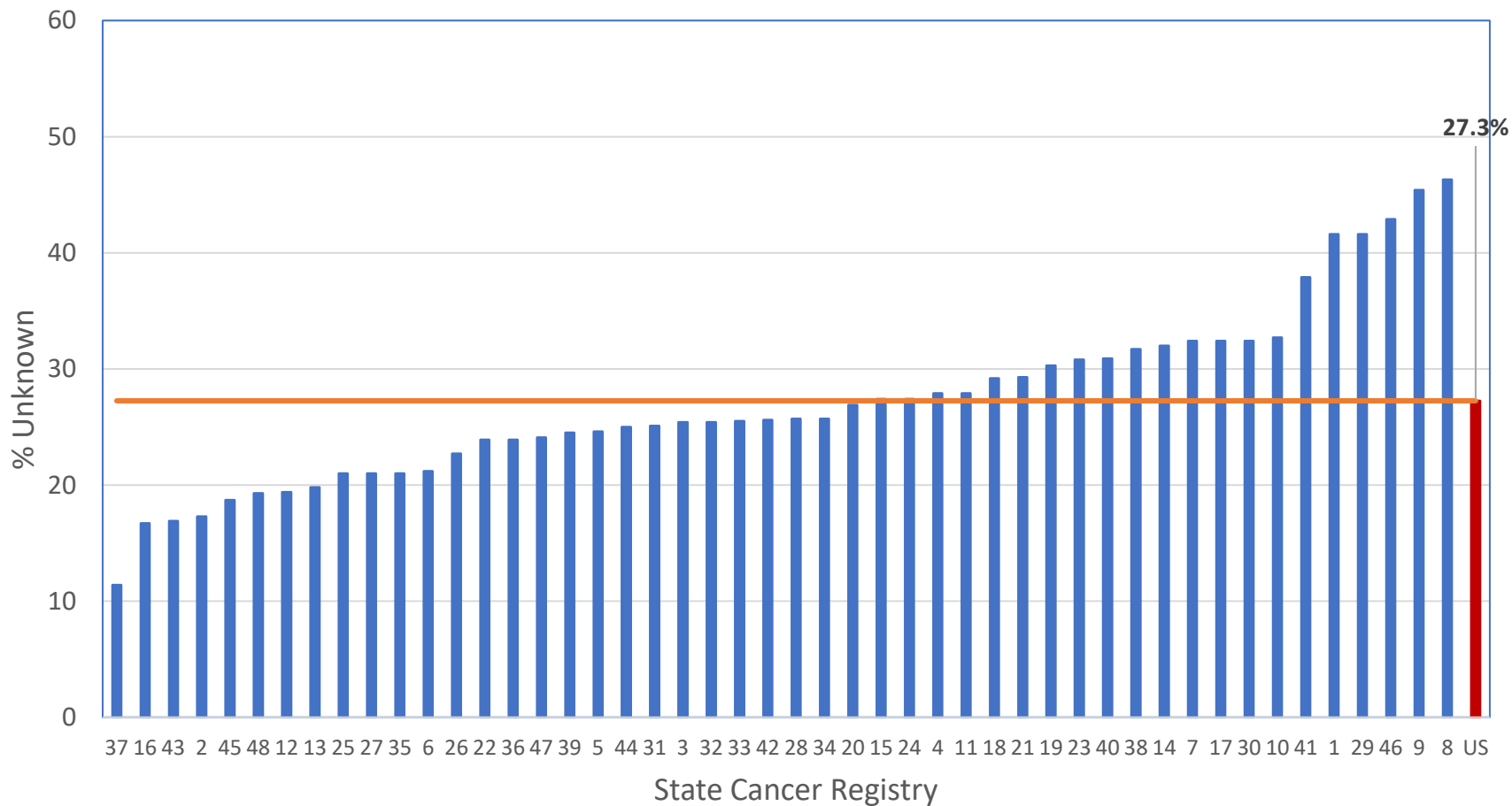


Table 2. Unknown CS tumor size by diagnosis year: Colorectal cancer 2010-2014

	2010		2011		2012		2013		2014	
Registry Level										
25-75% Percentile (IQR)	20.2%-24.2%		19.2%-23.3%		19.3%-22.6%		19.2%-22.6%		19.3%-22.8%	
Minimum	14.6%		15.3%		15.7%		14.0%		15.1%	
Mean	22.2%		21.9%		21.5%		21.1%		21.4%	
Median	21.7%		20.7%		20.7%		20.4%		21.0%	
Maximum	30.8%		34.3%		31.2%		34.9%		30.2%	
Upper Whisker ¹	30.2%		29.5%		27.6%		27.7%		28.1%	
# outside of upper whisker	1		4		5		1		4	
All cases combined	Total Count	% Unk	Total Count	%Unk	Total Count	% Unk	Total Count	% Unk	Total Count	%Unk
Sex										
Male	67,904	23.6%	68,279	23.4%	67,940	22.9%	68,379	22.1%	68,794	22.3%
Female	63,404	22.1%	62,697	21.8%	61,648	21.0%	61,547	20.9%	61,587	20.5%
Race										
White	108,383	22.3%	107,885	21.9%	106,500	21.3%	106,318	20.8%	106,130	20.8%
Black	16,411	24.8%	16,231	25.5%	16,166	24.1%	16,488	23.8%	16,483	23.5%
AI/AN	758	22.3%	745	24.0%	777	26.1%	816	25.5%	811	21.3%
Asian or Pacific Islander	4,604	24.2%	4,791	24.0%	4,713	22.7%	4,859	22.1%	5,088	21.5%
Unknown	1,152	47.3%	1,324	47.0%	1,432	45.0%	1,445	43.9%	1,869	44.2%
Age										
00-49 years	13,255	22.7%	13,083	22.3%	13,158	21.3%	13,072	20.5%	13,506	21.1%
50-64 years	39,432	23.8%	39,906	23.7%	39,923	23.1%	40,770	22.3%	42,288	22.2%
65-79 years	47,997	21.2%	47,625	20.9%	47,642	20.3%	47,695	20.2%	47,714	19.9%
80+ years	30,624	24.5%	30,362	24.1%	28,865	23.7%	28,389	23.2%	26,873	23.2%
Dx Confirmation²										
Microscopic confirmed	128,058	21.5%	127,744	21.2%	126,264	20.6%	126,687	20.2%	127,422	20.3%
Non-microscopic confirmed	2,121	69.5%	2,171	70.0%	2,199	66.9%	2,290	65.8%	2,187	64.1%
Unknown	1,129	96.6%	1,061	96.1%	1,125	95.4%	949	93.4%	772	93.3%
SEER Summary Stage										
Local	51,331	20.2%	50,209	19.1%	49,797	18.1%	49,382	17.3%	49,188	17.2%
Regional	45,244	8.1%	45,631	8.0%	45,068	7.8%	44,951	7.4%	45,530	7.4%
Distant	26,296	34.2%	26,582	35.2%	26,611	35.1%	27,700	35.4%	27,704	35.8%
Unknown	8,437	83.3%	8,554	83.2%	8,112	82.3%	7,893	79.8%	7,959	78.0%
Type of reporting source³										
Hospital	127,296	21.5%	126,915	21.2%	125,807	20.6%	126,432	20.2%	126,884	20.2%
Non-hospital	4,012	68.5%	4,061	67.2%	3,781	70.0%	3,494	68.6%	3,497	66.7%
Metro/Non-Metro 2013⁴										
Metro	107,288	22.7%	107,223	22.6%	105,959	21.8%	106,172	21.4%	107,162	21.4%
Non-Metro	23,962	23.6%	23,700	23.0%	23,561	23.0%	23,694	22.0%	23,150	21.7%
Unknown	58	56.9%	53	54.7%	68	63.2%	60	61.7%	69	49.3%
Surgery										
No	23,234	65.5%	23,898	64.7%	24,519	62.2%	25,467	60.3%	26,500	58.6%
Yes	106,587	12.7%	105,421	12.1%	103,438	11.4%	102,666	10.8%	101,855	10.7%
Unknown	1,487	88.4%	1,657	90.0%	1,631	88.2%	1,793	81.9%	2,026	79.2%

Table 3. Unknown CS tumor size by diagnosis year: Lung cancer 2010-2014

	2010		2011		2012		2013		2014	
Registry Level										
25-75% Percentile (IQR)	21.2%-26.6%		20.1%-25.8%		18.9%-24.4%		17.9%-23.4%		16.6%-21.3%	
Minimum	17%		15.5%		15.2%		13.6%		12.0%	
Mean	24.2%		23.4%		22.1%		20.9%		19.6%	
Median	23.3%		22.8%		21.0%		19.8%		18.4%	
Maximum	35.6%		33.8%		35.8%		39.0%		34.6%	
Upper Whisker ¹	34.7%		34.4%		32.7%		31.7%		28.4%	
# outside of upper whisker	2		0		3		1		4	
All cases combined	Total Count	% Unk	Total Count	%Unk	Total Count	% Unk	Total Count	% Unk	Total Count	%Unk
Sex										
Male	107,673	25.3%	107,694	24.3%	108,055	23.1%	107,951	21.9%	106,774	20.1%
Female	94,578	23.6%	95,030	22.6%	96,881	21.2%	97,534	19.7%	96,928	18.4%
Race										
White	174,275	24.4%	174,428	23.3%	175,785	22.1%	176,003	20.7%	174,101	19.2%
Black	21,612	24.8%	21,779	23.9%	22,306	22.8%	22,092	21.5%	22,053	19.7%
AI/AN	1,044	27.3%	1,038	26.0%	1,055	26.5%	1,122	22.8%	1,130	21.0%
Asian or Pacific Islander	4,679	24.4%	4,864	25.2%	5,095	22.3%	5,402	22.1%	5,277	19.9%
Unknown	641	36.8%	615	33.8%	695	27.6%	866	29.2%	1,141	26.5%
Age										
00-49 years	8,916	25.3%	8,327	23.8%	7,817	22.0%	7,399	21.9%	6,690	21.1%
50-64 years	57,291	24.3%	57,844	23.1%	58,130	21.9%	57,727	21.1%	57,635	19.5%
65-79 years	96,640	22.7%	97,054	22.0%	99,491	20.8%	100,943	19.4%	101,813	18.0%
80+ years	39,404	28.9%	39,499	27.5%	39,498	26.3%	39,416	24.1%	37,564	22.3%
Dx Confirmation²										
Microscopic confirmed	183,806	22.6%	184,678	21.7%	185,965	20.3%	187,013	19.4%	186,639	18.1%
Non-microscopic confirmed	13,953	28.2%	13,950	27.7%	14,725	25.8%	15,091	23.8%	14,353	22.2%
Unknown	4,492	91.4%	4,096	89.2%	4,246	91.3%	3,381	87.3%	2,710	83.9%
SEER Summary Stage										
Local	38,241	6.2%	39,212	5.6%	40,418	5.0%	41,559	4.3%	42,706	3.6%
Regional	47,101	13.4%	47,234	12.9%	47,418	12.2%	47,584	11.4%	46,676	10.4%
Distant	104,229	29.0%	104,300	28.2%	105,785	26.7%	106,359	25.8%	106,010	24.7%
Unknown	12,680	84.1%	11,978	82.7%	11,315	83.5%	9,983	82.3%	8,310	80.7%
Type of reporting source³										
Hospital	196,475	22.9%	197,341	22.0%	199,649	20.7%	200,568	19.5%	200,069	18.3%
Non-hospital	5,776	79.3%	5,383	77.9%	5,287	79.3%	4,917	75.6%	3,633	72.6%
Metro/Non-Metro 2013⁴										
Metro	163,332	24.2%	163,387	23.1%	165,120	21.9%	166,211	20.6%	164,446	19.0%
Non-Metro	38,852	25.7%	39,292	25.1%	39,720	23.3%	39,229	22.1%	39,187	20.4%
Unknown	67	38.8%	45	53.3%	96	44.8%	45	40.0%	69	24.60%
Surgery										
No	155,238	29.0%	155,692	27.8%	158,106	26.1%	158,975	24.6%	157,984	22.9%
Yes	43,496	3.7%	43,536	3.2%	43,138	3.1%	42,677	2.8%	42,254	2.2%
Unknown	3,517	84.5%	3,496	81.9%	3,692	79.5%	3,833	68.6%	3,464	62.8%

Table 4. Unknown CS tumor size by diagnosis year: Female breast cancer 2010-2014

	2010		2011		2012		2013		2014	
Registry Level										
25-75% Percentile (IQR)	3.4%-6.2%		3.0%-6.2%		2.7%-5.5%		2.9%-5.3%		2.4%-5.4%	
Minimum	2.0%		1.3%		1.5%		1.3%		1.3%	
Mean	5.1%		4.7%		4.6%		4.6%		4.3%	
Median	4.6%		4.3%		3.8%		3.4%		3.1%	
Maximum	17.9%		12.6%		16.7%		15.2%		13.6%	
Upper Whisker ¹	10.4%		11.0%		9.7%		8.9%		9.9%	
# outside of upper whisker	2		1		3		5		2	
All cases combined	Total Count	% Unk	Total Count	%Unk	Total Count	% Unk	Total Count	% Unk	Total Count	%Unk
Race										
White	175,273	5.7%	180,660	5.0%	183,195	4.9%	187,176	4.6%	188,300	4.4%
Black	24,356	7.4%	25,588	6.5%	25,838	6.1%	26,903	5.9%	27,234	5.5%
AI/AN	996	7.8%	1,139	5.8%	1,097	5.9%	1,218	7.1%	1,234	6.6%
Asian or Pacific Islander	7,559	5.6%	7,967	4.7%	8,411	4.7%	8,922	4.5%	9,132	3.9%
Unknown	1,666	16.2%	1,704	19.5%	1,971	20.9%	2,281	20.4%	2,604	19.1%
Age										
00-49 years	42,009	5.5%	42,606	4.7%	42,146	4.9%	42,144	4.9%	41,847	4.4%
50-64 years	77,582	5.4%	80,485	4.7%	81,030	4.7%	82,971	4.5%	84,296	4.4%
65-79 years	64,538	5.6%	67,992	4.9%	71,538	4.7%	75,803	4.4%	77,650	4.2%
80+ years	25,721	9.5%	25,975	8.9%	25,798	8.7%	25,582	8.0%	24,711	7.8%
Dx Confirmation²										
Microscopic confirmed	207,717	5.4%	215,069	4.7%	218,536	4.7%	224,667	4.5%	226,881	4.3%
Non-microscopic confirmed	1,181	47.6%	1,088	45.2%	1,130	39.2%	1,094	42.0%	1,065	40.9%
Unknown	952	94.4%	901	93.5%	846	94.9%	739	91.9%	558	85.1%
SEER Summary Stage										
Local	130,272	2.2%	136,997	1.8%	140,235	1.7%	145,448	1.6%	147,603	1.6%
Regional	61,367	3.6%	61,861	3.2%	62,008	3.4%	62,643	3.2%	62,414	2.9%
Distant	12,402	23.2%	12,785	21.2%	12,981	21.0%	13,254	21.1%	13,554	19.8%
Unknown	5,809	80.0%	5,415	79.1%	5,288	78.2%	5,155	78.1%	4,933	78.2%
Type of reporting source³										
Hospital	204,883	5.2%	212,397	4.5%	215,765	4.5%	221,696	4.2%	223,870	4.0%
Non-hospital	4,967	39.1%	4,661	39.2%	4,747	38.3%	4,804	38.6%	4,634	38.0%
Metro/Non-Metro 2013⁴										
Metro	178,463	6.0%	184,622	5.2%	187,827	5.1%	193,629	4.9%	195,307	4.6%
Non-Metro	31,161	6.1%	32,334	5.4%	32,551	5.5%	32,807	5.3%	33,082	5.2%
Unknown	226	23.0%	102	44.1%	134	44.8%	64	31.3%	115	40.0%
Surgery										
No	21,687	33.0%	22,432	28.6%	24,600	26.5%	25,655	24.2%	28,154	21.7%
Yes	186,896	2.4%	193,052	2.0%	194,300	2.0%	198,608	1.8%	198,065	1.7%
Unknown	1,267	73.2%	1,574	71.5%	1,612	65.1%	2,237	59.4%	2,285	56.0%

Table 5. Unknown CS tumor size by diagnosis year: Kidney cancer 2010-2014

	2010		2011		2012		2013		2014	
Registry Level										
25-75% Percentile (IQR)	4.4%-6.8%		4.0%-5.9%		3.8%-6.2%		3.3%-6.0%		2.9%-5.1%	
Minimum	1.2%		1.0%		0.8%		2.0%		1.0%	
Mean	5.9%		5.4%		5.3%		5.2%		4.3%	
Median	5.3%		4.8%		4.8%		4.6%		4.1%	
Maximum	14.6%		16.0%		15.9%		14.6%		13.1%	
Upper Whisker ¹	10.4%		8.7%		9.8%		10.0%		8.4%	
# outside of upper whisker	2		5		4		3		1	
All cases combined	Total Count	% Unk	Total Count	%Unk	Total Count	% Unk	Total Count	% Unk	Total Count	%Unk
Sex										
Male	30,264	6.4%	31,282	6.1%	32,354	6.2%	33,469	5.7%	34,166	4.8%
Female	18,215	6.4%	18,685	6.2%	19,162	5.9%	19,384	5.6%	19,645	4.7%
Race										
White	40,827	6.4%	41,899	6.2%	43,234	6.1%	43,971	5.6%	44,648	4.8%
Black	5,881	6.5%	6,210	5.4%	6,323	5.8%	6,680	5.6%	6,864	4.5%
AI/AN	396	4.8%	425	6.8%	430	7.0%	451	5.8%	442	4.3%
Asian or Pacific Islander	983	5.7%	1,059	4.9%	1,094	5.1%	1,205	5.0%	1,215	3.6%
Unknown	392	8.7%	374	7.2%	435	7.8%	546	9.2%	642	6.4%
Age										
00-49 years	7,896	3.5%	7,989	3.6%	8,048	3.6%	8,165	3.3%	8,193	3.0%
50-64 years	17,843	4.7%	18,664	4.7%	19,179	4.5%	19,357	4.2%	20,036	3.8%
65-79 years	17,205	7.0%	17,606	6.3%	18,805	6.5%	19,737	6.0%	20,226	5.0%
80+ years	5,535	13.9%	5,708	13.5%	5,484	13.7%	5,594	12.8%	5,356	10.3%
Dx Confirmation²										
Microscopic confirmed	43,897	5.1%	45,310	4.9%	46,654	5.0%	47,695	4.6%	49,022	4.0%
Non-microscopic confirmed	4,099	10.6%	4,188	10.1%	4,426	9.9%	4,752	9.5%	4,499	8.5%
Unknown	483	88.0%	469	90.8%	436	87.6%	406	85.5%	290	77.6%
SEER Summary Stage										
Local	32,877	1.7%	33,940	1.6%	35,094	1.7%	36,055	1.7%	36,836	1.3%
Regional	6,805	2.5%	6,981	2.9%	7,361	2.9%	7,461	2.6%	7,771	2.2%
Distant	6,758	16.0%	6,988	15.4%	7,128	15.8%	7,507	14.7%	7,526	13.5%
Unknown	2,039	62.3%	2,058	59.8%	1,933	61.7%	1,830	59.1%	1,678	53.2%
Type of reporting source³										
Hospital	47,799	5.6%	49,290	5.4%	50,900	5.4%	52,215	5.0%	53,249	4.3%
Non-hospital	680	60.7%	677	59.1%	616	58.6%	638	58.2%	562	47.7%
Metro/Non-Metro 2013⁴										
Metro	40,038	6.2%	41,304	6.1%	42,519	5.9%	43,748	5.5%	44,547	4.7%
Non-Metro	8,414	7.3%	8,655	6.2%	8,956	6.9%	9,092	6.1%	9,239	5.1%
Unknown	27	22.2%	8	12.5%	41	12.2%	13	23.1%	25	8.0%
Surgery										
No	11,225	18.5%	11,551	17.1%	11,997	17.6%	12,820	15.5%	12,580	14.1%
Yes	36,873	2.0%	38,008	2.0%	39,117	1.9%	39,566	1.9%	40,811	1.5%
Unknown	381	75.3%	408	73.5%	402	65.2%	467	56.5%	420	46.7%

Table 6. Unknown CS tumor size by diagnosis year: Cervical cancer 2010-2014

	2010		2011		2012		2013		2014	
Registry Level										
25-75% Percentile (IQR)	30.5%-40.8%		28.4%-40.7%		27.6%-38.8%		25.5%-35.5%		27.1%-36.3%	
Minimum	20.6%		19.5%		14.0%		10.0%		16.7%	
Mean	36.1%		35.6%		33.6%		30.9%		32.0%	
Median	34.2%		35.5%		31.6%		30.0%		30.3%	
Maximum	60.0%		60.5%		63.0%		54.1%		50.0%	
Upper Whisker ¹	56.3%		59.2%		55.6%		50.5%		50.1%	
# outside of upper whisker	1		1		1		2		0	
All cases combined	Total Count	% Unk	Total Count	%Unk	Total Count	% Unk	Total Count	% Unk	Total Count	%Unk
Race										
White	9,089	37.7%	9,246	36.9%	9,072	34.2%	8,949	32.6%	9,314	31.8%
Black	2,083	42.2%	1,905	41.3%	1,921	40.9%	1,950	37.1%	1,846	36.3%
AI/AN	107	35.5%	115	29.6%	116	33.6%	106	39.6%	97	25.8%
Asian or Pacific Islander	550	35.8%	540	33.9%	575	33.0%	577	28.6%	588	29.9%
Unknown	188	54.8%	168	55.4%	237	48.5%	217	53.9%	274	48.9%
Age										
00-49 years	6,052	34.4%	5,990	33.5%	5,901	31.1%	5,757	29.6%	5,975	28.6%
50-64 years	3,680	39.6%	3,598	39.1%	3,698	36.7%	3,657	35.2%	3,816	34.0%
65-79 years	1,712	45.8%	1,785	43.8%	1,739	42.4%	1,828	39.0%	1,788	39.4%
80+ years	573	54.8%	601	52.4%	583	51.6%	557	47.0%	540	48.1%
Dx Confirmation²										
Microscopic confirmed	11,777	37.7%	11,759	36.8%	11,696	34.6%	11,584	32.7%	11,917	32.1%
Non-microscopic confirmed	73	58.9%	71	70.4%	91	63.7%	91	64.8%	97	56.7%
Unknown	167	94.6%	144	91.7%	134	92.5%	124	94.4%	105	92.4%
SEER Summary Stage										
Local	5,281	30.9%	5,093	28.9%	5,103	27.3%	4,998	24.9%	5,169	25.2%
Regional	4,257	33.5%	4,286	32.9%	4,290	30.9%	4,282	29.6%	4,364	27.7%
Distant	1,630	47.9%	1,756	48.2%	1,775	46.4%	1,830	45.0%	1,920	45.1%
Unknown	849	94.0%	839	92.4%	753	91.4%	689	91.9%	666	89.8%
Type of reporting source³										
Hospital	11,635	37.3%	11,606	36.2%	11,568	34.2%	11,455	32.3%	11,761	31.4%
Non-hospital	382	77.0%	368	82.1%	353	77.6%	344	79.4%	358	76.5%
Metro/Non-Metro 2013⁴										
Metro	10,103	39.0%	10,095	37.7%	10,122	35.8%	10,004	33.7%	10,156	32.5%
Non-Metro	1,906	36.5%	1,872	36.9%	1,791	33.4%	1,789	32.9%	1,953	33.9%
Unknown	8	62.5%	7	71.4%	8	62.5%	6	66.7%	10	70.0%
Surgery										
No	5,613	48.8%	5,776	46.9%	5,615	44.8%	5,688	42.5%	5,888	41.3%
Yes	6,240	28.0%	6,016	27.1%	6,123	25.4%	5,918	23.3%	6,025	22.6%
Unknown	164	93.3%	182	91.2%	183	86.9%	193	89.1%	206	86.4%