

CANCER REGISTRIES



TRACK AND MONITOR CANCER TRENDS OVER TIME
AND PROVIDE VITAL INFORMATION

FOR ALLOCATING RESOURCES, IMPLEMENTING PREVENTION, SCREENING AND TREATMENT PROGRAMS,
AND EVALUATING THE IMPACT AND EFFECTIVENESS OF CANCER PROGRAMS AND POLICIES

GLOBAL CANCER BURDEN

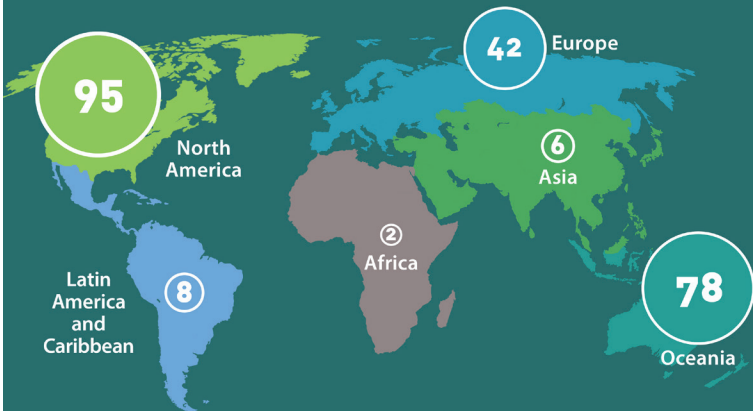
In 2012 there were 14.1 million new cancer cases, which is estimated to rise 54% by 2030



Globocan 2012, World Health Organization

SCARCITY OF CANCER DATA

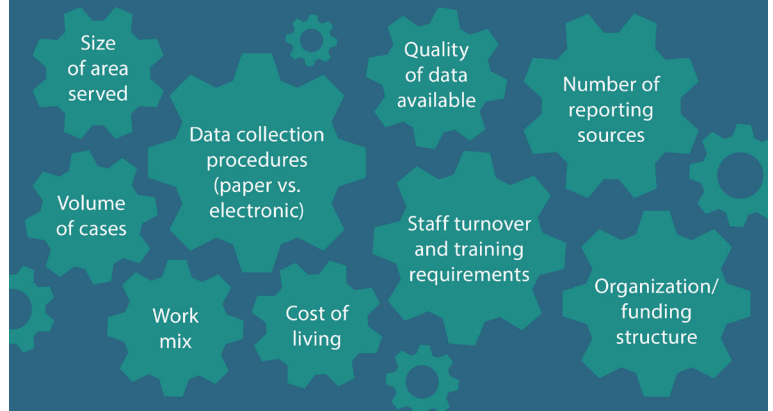
Percentage of population covered by high quality cancer registries



The Cancer Atlas, American Cancer Society

FACTORS THAT AFFECT COSTS¹

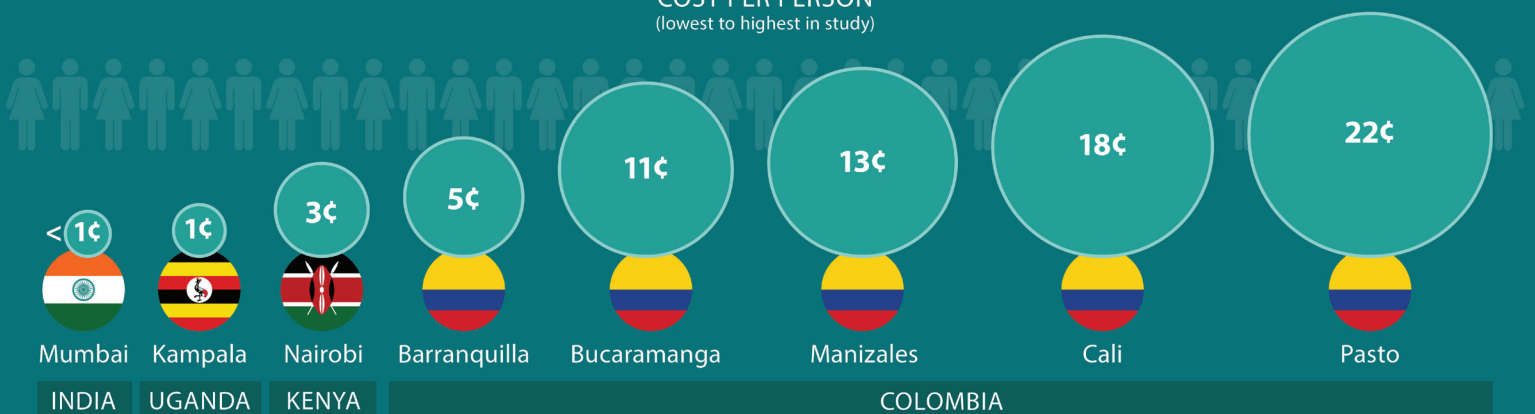
Cancer registries can improve operations and efficiency



COST AT THE POPULATION LEVEL²

Spread over the population covered by the registries, registry costs per person are low

COST PER PERSON
(lowest to highest in study)



¹ Subramanian, Sujha et al. Developing and testing a cost data collection instrument for noncommunicable disease registry planning. *Cancer Epidemiology*, 2016.

² Tangka, Florence et al. Resource requirements for cancer registration in areas with limited resources: Analysis of cost data from four low- and middle-income countries. *Cancer Epidemiology*, 2016.

To learn more, visit

www.cancerepidemiology.net

U.S. Department of Health and Human Services
Centers for Disease Control and Prevention