

State Cancer Profiles: Cancer Statistics for States and Counties Made Quick and Easy.

**B. Sue Bell, Ben Hankey, Brenda Edwards, NCI
Mary Hutton, Phyllis Wingo, CDC
Dan Carr, George Mason University
James Cucinelli, IMS**

**NAACCR 2003 Conference
Honolulu, Hawaii
June 2003**

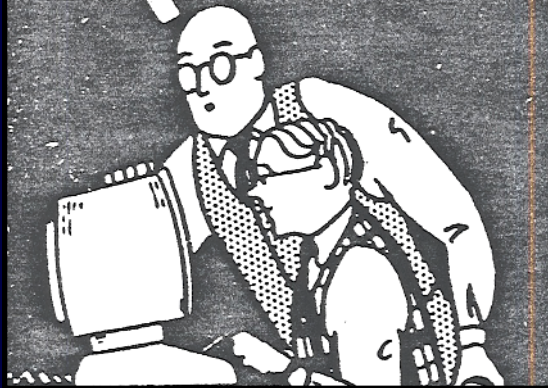
ASK FOR THE AGES
OF ALL SINGLE U.S.
MALES WHO LIVE
IN HOUSES WORTH
\$100,000 OR MORE.



I'M SORRY, SEYMOUR,
BUT WE CAN'T RETRIEVE
THAT INFORMATION
FROM OUR DATA BASE.



WELL, WHAT'S THE
CLOSEST THING TO
IT THAT WE CAN
RETRIEVE?



THE SERIAL NUMBERS
OF ALL THE WASHING
MACHINES IN
POUGHKEEPSIE.



Outline

- ▶ **Why the investment?**
- ▶ **What has been provided?**
 - ▶ **CancerControlPLANET.cancer.gov**
 - ▶ **StateCancerProfiles.cancer.gov**
 - ▶ **Behind the Story**
- ▶ **Evolution and Revolution**
 - ▶ **Design Challenges**
 - ▶ **Technical Challenges**
- ▶ **What's next?**

Why the investment?

- ▶ **ROI - Return on Investment**
- ▶ **Bang for the Buck**
- ▶ **NCI Director's Challenge:**
Eliminate suffering and death
due to cancer by 2015

What has been provided?

- ▶ **“Dynamic views** of cancer statistics for prioritizing cancer control efforts in the nation, states, and counties”
- ▶ **Cancer sites** include All Sites, Bladder, Breast (female), Cervix, Colon & Rectum, Lung & Bronchus, Melanoma, Oral & Pharynx, and Prostate
- ▶ Targeted **Audiences** include health planners, policy-makers, cancer information providers

What was the design **vision**?

- ▶ **Quick and Easy** Decision Support
 - ▶ graphical and statistical summaries over geography, over time, and over demographic subgroups
 - ▶ measures of statistical stability for the layman
- ▶ **Standard** characterization of cancer burden
 - ▶ illuminate disparities so they can be addressed
 - ▶ support planning and analysis
- ▶ **Synthesize** data from existing Public Health Surveillance Systems
- ▶ Make **Seductive** - fun, interactive, exploratory



Cancer Control PLANET

Links to resources for comprehensive cancer control

[Home](#)
[Contact Us](#)
[About This Site](#)
[PLANET Sponsors](#)

Cancer Control
ion Sciences

Follow 5 planning steps to develop cancer control programs



Find information by cancer control topic

[Learn why these steps are important](#)

Step 1 Assess program priorities

- ▶ [State Cancer Profiles](#)
(NCI & CDC Web site)
 - Mortality, incidence, screening & risk factors data

Step 2 Identify potential partners

- ▶ [Regional and state contact information for cancer control partners](#)

Step 3 Determine effectiveness of different intervention approaches

- ▶ [Guide to Community Preventive Services](#)
(Federally-sponsored Web site). Example:
 - Increasing cessation (media campaigns, provider reminder systems)

Step 4 Find examples of research-tested intervention programs and products

- ▶ [Research-tested Intervention Programs](#)
(NCI & SAMHSA Web site). Example:
 - "Guía Para Dejar de Fumar" - A Spanish language self-help guide for smokers who want to quit

Step 5 Plan and evaluate your program

- ▶ [Guidance for comprehensive cancer control planning](#)
(CDC Web site)
 - Guidance for planning and evaluation

- [Tobacco control](#)
- [Physical activity](#)

Coming Soon:

- Sun safety
- Breast cancer screening
- Cervical cancer screening
- Colorectal cancer screening
- Informed decision making for cancer screening
- 5 A Day
- Diet

PLANET Sponsors



Note: This web site is best viewed in [Internet Explorer](#) (version 5.0 or higher) or [Netscape](#) (version 7.0 or higher) at a [screen resolution](#) of 1024 by 768 or more.

We welcome your feedback on the Cancer Control PLANET and its satellite Web sites. To submit feedback, please [contact us](#). Thank you for helping to improve this site for the cancer control community.

State Cancer Profiles

Dynamic views of cancer statistics for prioritizing cancer control efforts in the nation, states, and counties

Help us improve!
Contact us with
feedback.

Profiles Home

Quick Profiles

Area

Cancer

Generate Profile

Comparison Tables



Rate/Trend Comparisons

set higher priority for cancer control when rates are high or rising
[learn more...](#)

- [by State/County](#) prioritize cancer sites
- [by Cancer](#) prioritize states or counties in a state



Death Rates

for states or for counties in a state
[learn more...](#)



Incidence Rates

for states with high quality cancer registries
[learn more...](#)

Interactive Graphs and Maps



5-Year Rate Changes

in cancer mortality or incidence for all major cancer sites by user selectable criteria
[learn more...](#)



Historical Trends

compare trends in cancer mortality and incidence by user selectable criteria
[learn more...](#)



Latest Rates, Percents, and Counts

explore relationships across geography of mortality, incidence, demographics, or risk factors
[learn more...](#)

Support Data



Screening and Risk Factors

prevalence percents by state from behavioral surveys
[learn more...](#)



Peer Counties

identify counties that are comparable based on a user specified criteria
[learn more...](#)



Age Distribution

male and female population sizes by age groups by user selectable criteria
[learn more...](#)



[Cancer Control PLANET Home](#)

Help & About

- [About this Site](#)
- [Quick Reference Guides](#)
- [Tutorials](#)
- [Interpret Rankings](#)

- [Low Vision/Accessibility](#)

- **Note:** This web site is best viewed in [Internet Explorer](#) (version 5.0 or higher) or [Netscape](#) (version 7.0 or higher) at a [screen resolution](#) of 1024 by 768 or more.

Links

- [State Registry Contacts](#)
- [US Cancer Statistics: 1999 Incidence](#)
- [Resources for Cancer Control: Cancercontrolplanet.cancer.gov](#)
- [Cancer Progress Report 2001](#)
- [Annual Report to the Nation](#)
- [CDC's National Program of Cancer Registries](#)
- [NCI's SEER - Surveillance, Epidemiology, and End Results](#)
- [Cancer Facts and Figures \(American Cancer Society\)](#)
- [Finding Cancer Statistics](#)
- [more...](#)

Quick Profile

Quick Profile - State Cancer Profiles - Microsoft Internet Explorer

File Edit View Favorites Tools Help

Links >>

cancer.gov

NATIONAL CANCER INSTITUTE

State Cancer Profiles

Dynamic views of cancer statistics for prioritizing cancer control efforts in the nation, states, and counties

Help us improve! Contact us with feedback.

CDC

Profiles Home > Quick Profile

Area: Connecticut

Cancer: Colon & Rectum

Generate Profile

About this Profile

Quick Reference Guide

Tutorial

Help

This quick report contains:

[Rate/Trend Comparison by Cancer: Colorectal](#)

[Rate/Trend Comparison by State/County](#)

Historical Trends (25 Years):

- [Mortality](#)
- [Incidence](#)

5-Year Rate Changes:

- [Mortality](#)
- [Incidence](#)

[Death Rates](#)

[Incidence Rates](#)

Links to what's provided

Rate/Trend Comparison by Cancer: Colorectal

Death Rate/Trend Comparison by Cancer, death years through 2000
Connecticut Counties versus United States

Colon & Rectum
All Races, Both Sexes

Above US Rate

Similar to US Rate

Below US Rate

Rising Trend

Priority 1: rising ↑ and above ↑
[none]

Priority 2: rising ↑ and similar =
[none]

Priority 3: rising ↑ and below ↓
[none]

Modify

Data Table

Interpret

Printable View

Explore Deeper

Behind the Story:

How many? How much above?

Death Rate/Trend Comparison by State/County, death years through 2000 Maryland versus United States

All Races, Both Sexes

| | Above US Rate | Similar to US Rate | Below US Rate |
|---------------|--|---|---|
| Rising Trend | Priority 1: rising ↑ and above ↑ [none] | Priority 2: rising ↑ and similar = Melanoma of the Skin (Males) | Priority 3: rising ↑ and below ↓ [none] |
| Stable Trend | Priority 4: stable → and above ↑ [none] | Priority 6: stable → and similar = Bladder (Females) Lung & Bronchus (Females) Melanoma of the Skin (Females) | Priority 7: stable → and below ↓ Oral cavity & pharynx (Females) |
| Falling Trend | Priority 5: falling ↓ and above ↑ Colon & Rectum (Females) Colon & Rectum (Males) Oral cavity & pharynx (Males) | Priority 8: falling ↓ and similar = Bladder (Males) Breast (Females) Lung & Bronchus (Males) Prostate (Males) | Priority 9: falling ↓ and below ↓ Cervix (Females) |

Created by statecancerprofiles.cancer.gov on 06/05/2003 7:55 am.

Data Table: How many died? How much above?

| Cancer Site △ | Priority Index ¹ 1=highest 9=lowest △ | Recent Trend ² | State Death Rate Compared to US Rate | Deaths per year 2000 ▲ | Annual Death Rate 2000 deaths per 100,000 (95% Confidence Interval) △ | Rate Ratio ³ State to US △ | Annual Percent Change ² in Death Rates (95% Confidence Interval) △ | Recent Trend Period ² |
|---------------------------|---|---------------------------|--------------------------------------|---------------------------|--|--|---|----------------------------------|
| Lung & Bronchus (Males) | 8 | falling ↓ | similar = | 1,623 | 79.2 (75.3, 83.3) | 1.0 | -1.9 (-2.3, -1.5) | 1987 - 2000 |
| Lung & Bronchus (Females) | 6 | stable → | similar = | 1,302 | 46.1 (43.6, 48.7) | 1.1 | 0.4 (-0.3, 1.1) | 1990 - 2000 |
| Breast (Females) | 8 | falling ↓ | similar = | 795 | 27.7 (25.8, 29.7) | 1.0 | -4.0 (-6.0, -1.9) | 1995 - 2000 |
| Colon & Rectum (Females) | 5 | falling ↓ | above ↑ | 587 | 20.3 (18.7, 22.1) | 1.2 | -1.8 (-2.0, -1.6) | 1976 - 2000 |
| Colon & Rectum (Males) | 5 | falling ↓ | above ↑ | 577 | 29.6 (27.1, 32.2) | 1.2 | -1.9 (-2.3, -1.5) | 1981 - 2000 |
| Prostate (Males) | 8 | falling ↓ | similar = | 546 | 32.2 (29.5, 35.1) | 1.1 | -4.2 (-5.0, -3.4) | 1991 - 2000 |
| Bladder (Males) | 8 | falling ↓ | similar = | 122 | 6.7 (5.5, 8.0) | 0.9 | -1.5 (-2.0, -0.9) | 1976 - 2000 |

Modify Quick Profile to Explore

URL has coding
Breadcrumb navigation

Rate/Trend Comparison by State/County - State Cancer Profiles - Microsoft Internet Explorer

File Edit View Favorites Tools Help

Address <http://statecancerprofiles.cancer.gov/cgi-bin/ratetrendbyarea/rtarea.pl?24&510&24&1&0&1>

Profiles Home > Rate/Trend Comparison by State/County

State: [About this Graph](#)

County: [Quick Reference Guide](#)

Compare To: [Tutorial](#)

Death Rate/Trend Comparison by State/County, death years through 2000
Baltimore City, Maryland versus Maryland

All Races, Both Sexes

| | Above State Rate | Similar to State Rate | Below State Rate |
|----------------------|--|--|--|
| Rising Trend | Priority 1: rising ↑ and above ↑ Bladder (Females) | Priority 2: rising ↑ and similar = [none] | Priority 3: rising ↑ and below ↓ [none] |
| Stable Trend | Priority 4: stable → and above ↑ Breast (Females) Cervix (Females) Lung & Bronchus (Females) Lung & Bronchus (Males) Prostate (Males) | Priority 6: stable → and similar = Bladder (Males) | Priority 7: stable → and below ↓ Melanoma of the Skin (Females) Melanoma of the Skin (Males) |
| Falling Trend | Priority 5: falling ↓ and above ↑ Colon & Rectum (Females) Colon & Rectum (Males) Oral cavity & pharynx (Males) | Priority 8: falling ↓ and similar = Oral cavity & pharynx (Females) | Priority 9: falling ↓ and below ↓ [none] |

Created by statecancerprofiles.cancer.gov on 06/11/2003 2:52 pm.

Trend
Rising when 95% confidence interval of annual percent change is above 0.
Stable when 95% confidence interval of annual percent change includes 0.

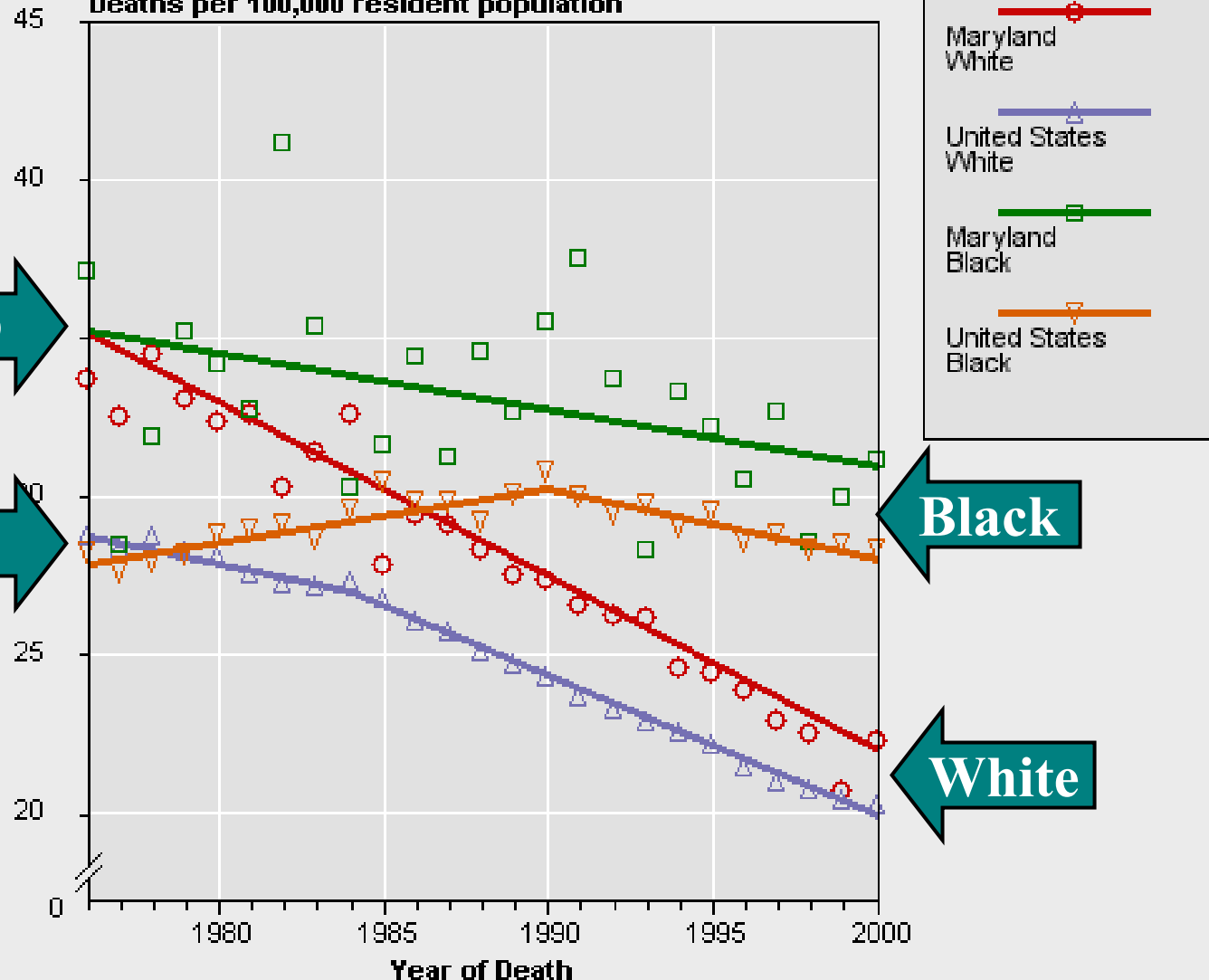
[Data Table](#)
[Interpret](#)
[Printable View](#)

Internet

Historical Trends (1976-2000)

Mortality, Colon & Rectum Both Sexes, All Ages

Deaths per 100,000 resident population



MD

US

Black

White

Modify Historical Trends

Historical Trends - State Cancer Profiles - Microsoft Internet Explorer

File Edit View Favorites Tools Help

Back Forward Stop Refresh Home Search Favorites Media History Mail Print Edit Discuss Dell Home Real.com Links

cancer.gov

NATIONAL CANCER INSTITUTE

State Cancer Profiles
Dynamic views of cancer statistics for prioritizing cancer control efforts in the nation, states, and counties

Help us improve!
Contact us with feedback.

CDC

Profiles Home > Historical Trends

Area: United States
Cancer: Colon & Rectum
Data: Mortality
Race: Black
Sex: Both Sexes
Age: All Ages

[About this Graph](#)
[Quick Reference Guide](#)
[Tutorial](#)

Customize Picks

Add Line Undo Last
Generate Graph Clear

☒ Show Yearly Points

Take off yearly points

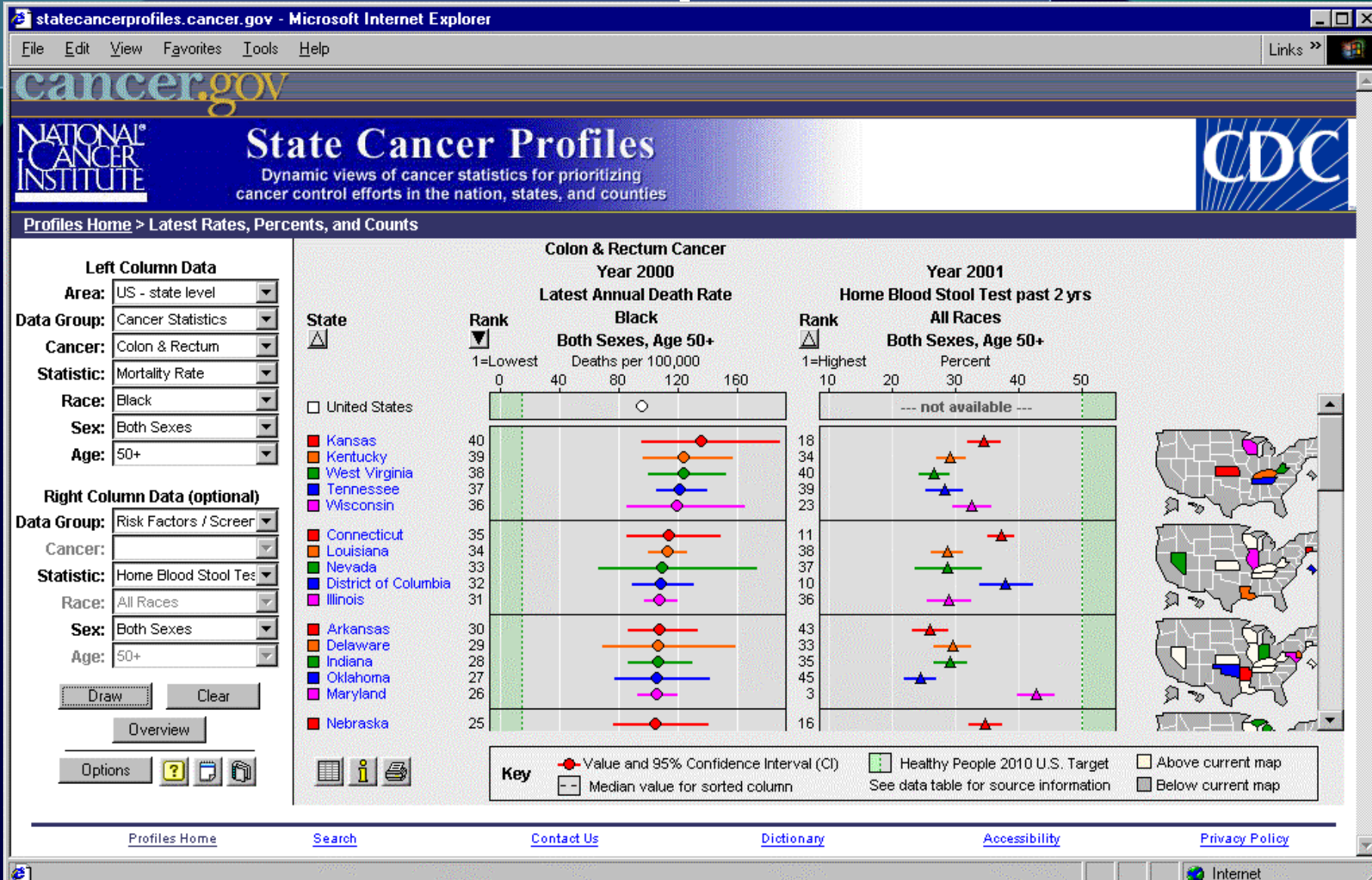
Historical Trends (1976-2000)
Mortality, Colon & Rectum
Both Sexes, All Ages
Deaths per 100,000 resident population

Key
Mortality
Colon & Rectum
Both Sexes
All Ages

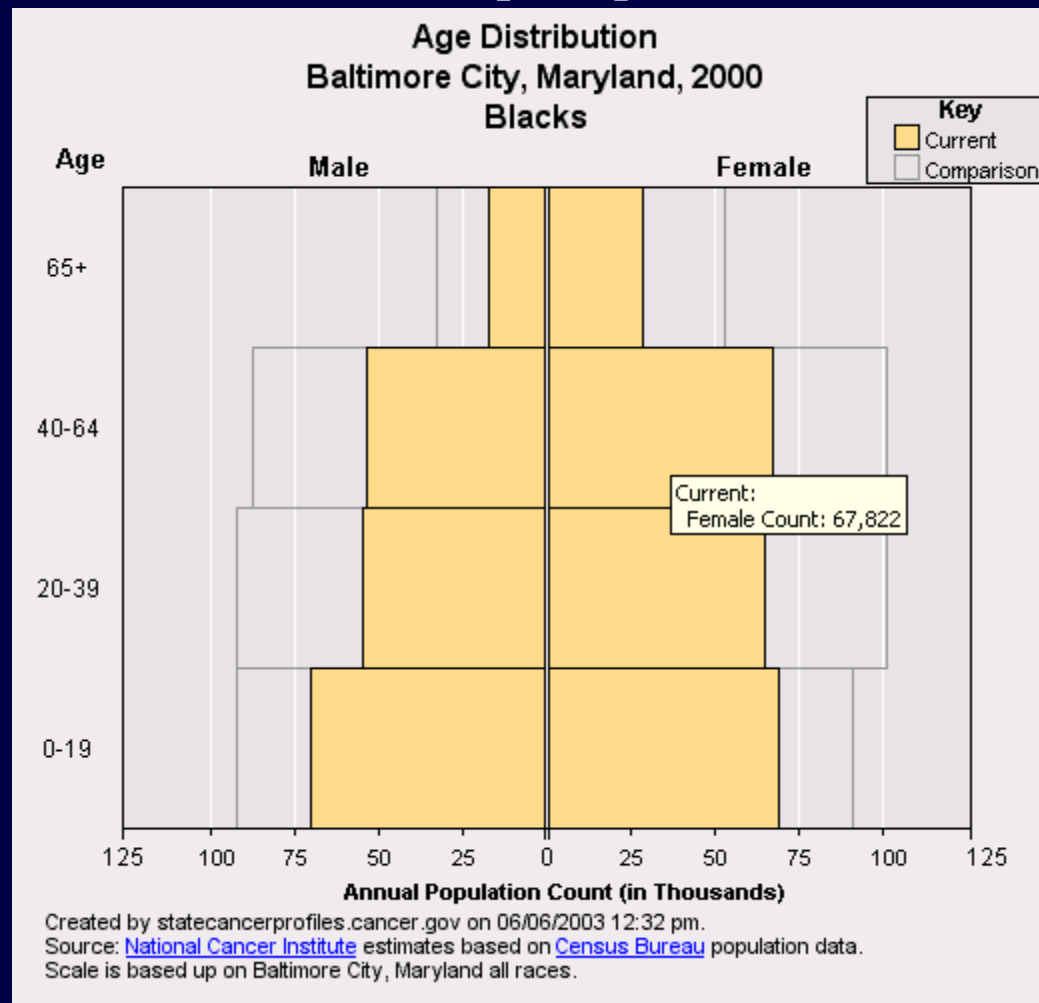
[Data Table](#)
[Interpret](#)

Internet


Latest Rates Percents Counts aka Linked Micromap Plots




Sample Story: What is the age distribution of the population?




Which research tested intervention programs (RTIPS) target my demographics?



Research-tested
Intervention Programs (RTIPs)



RTIPs- Moving Science into Programs for People
[Home](#)
[Frequently Asked Questions](#)
[Contact Us](#)



Tobacco Control Intervention Programs

Scroll down to find a complete listing of intervention programs, or refine your search below.

Refine Your Search: Results will match any one or more of your selections.

| | | |
|--|--|--|
| Age <input type="checkbox"/> Children (0-10 years) <input type="checkbox"/> Adolescents (11-18 years) <input type="checkbox"/> Young Adults (19-39 years) <input type="checkbox"/> Adults (40-65 years) <input type="checkbox"/> Older Adults (65+ years) <input type="checkbox"/> All Ages | Race/Ethnicity <input type="checkbox"/> Alaskan Native <input type="checkbox"/> American Indian <input type="checkbox"/> Asian <input type="checkbox"/> Black, not of Hispanic origin <input type="checkbox"/> Hispanic <input type="checkbox"/> Pacific Islander <input type="checkbox"/> White, not of Hispanic origin <input type="checkbox"/> All Races/Ethnicities | Setting <input type="checkbox"/> Community <input type="checkbox"/> Religious establishments <input type="checkbox"/> Rural <input type="checkbox"/> Suburban <input type="checkbox"/> Urban/Inner City <input type="checkbox"/> School-based <input type="checkbox"/> Clinical <input type="checkbox"/> Workplace <input type="checkbox"/> All Settings |
|--|--|--|

(No selection = All records)

| Program Title & Description (12 programs listed) | Behavioral Focus | Population Focus |
|---|-----------------------|------------------|
| Title: Commit to Quit Delivery Channel: <i>Small Group Education</i> Purpose: Designed to test the efficacy of vigorous-intensity physical activity as an aid for smoking cessation for women. | Behavior Modification | Current Smokers |
| Title: Enhancing Tobacco Control Policies in Northwest Indian Tribes Delivery Channel: <i>Policy/Advocacy</i> Purpose: Designed to change tobacco-use policies at the community level. | Increase Awareness | Current Smokers |
| Title: Partnership for Health | Smoking Cessation | Cancer Survivors |

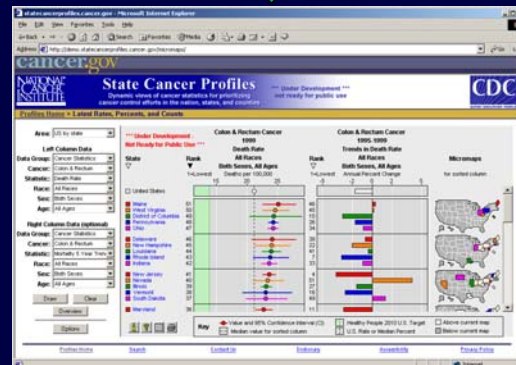
Evolutionary Prototyping

Design & Evolve

Focus Groups



Usability Testing



Design Challenges

- ▶ Protecting *confidentiality* of cancer patients.
- ▶ Ensuring that users of the system *do not misinterpret* the information.
- ▶ Providing graphics that *support complex decisions* yet are easy to understand.
- ▶ Complying with Section 508 of the Rehabilitation Act for web *accessibility*.
- ▶ Competing *standards* for Web design

Technical Challenges

- ▶ Screen Resolution
- ▶ Netscape at NCI
- ▶ Cookie Monster
- ▶ UGBoJ - Ugly Gray Box of JAVA
- ▶ Firewalls
- ▶ Inconsistency in what data is available
- ▶ Open Source vs “OTS” (off the shelf)

What's Next?

▶ Near Term

- ▶▶ Data updated (USCS 2000, BRFSS 2002)
- ▶▶ Complete features (Export, Show Me)
- ▶▶ NCHS adopting Linked Micromap Plots

▶ Longer Term

- ▶▶ Share data across the Internet
- ▶▶ Additional cancer statistics (stage, YPLL)
- ▶▶ County-level historical trends (ie Joinpoint)

Please, Help us improve!!

▶ **Contact Us**

- ▶ statecancerprofiles.cancer.gov
- ▶ cancercontrolplanet.cancer.gov

▶ **Email – bellsu@mail.nih.gov**

Sue Bell

**Surveillance Research and Applications Branch
SRP, DCCPS, NCI**