

National Cancer Control Strategy – United States: Are We Skating to Where the Puck will Be?



Jon F. Kerner, Ph.D.
Deputy Director, Division of Cancer Control
& Population Sciences

NAACCR 2006 Conference

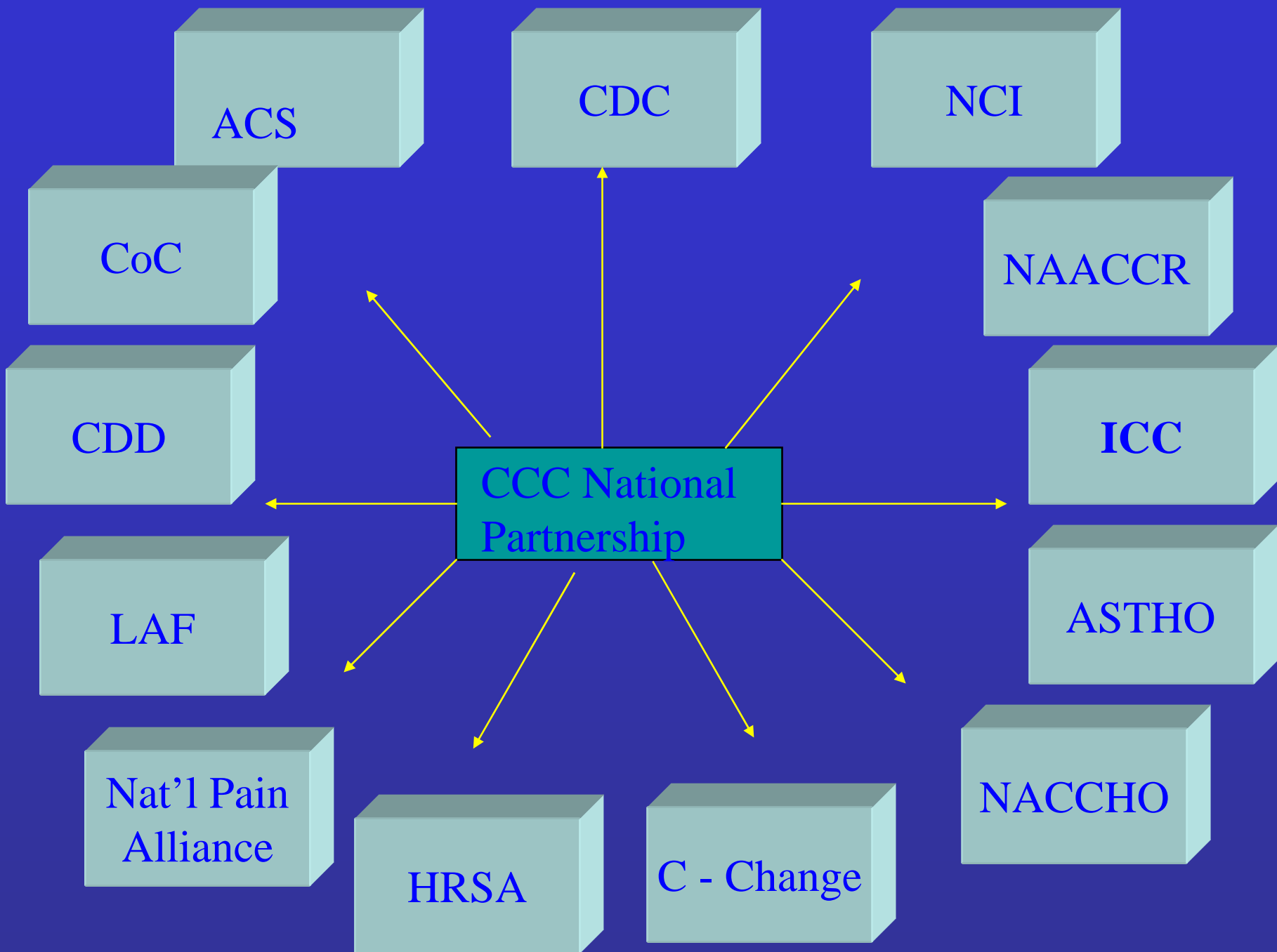
June 13, 2006

Presentation Summary

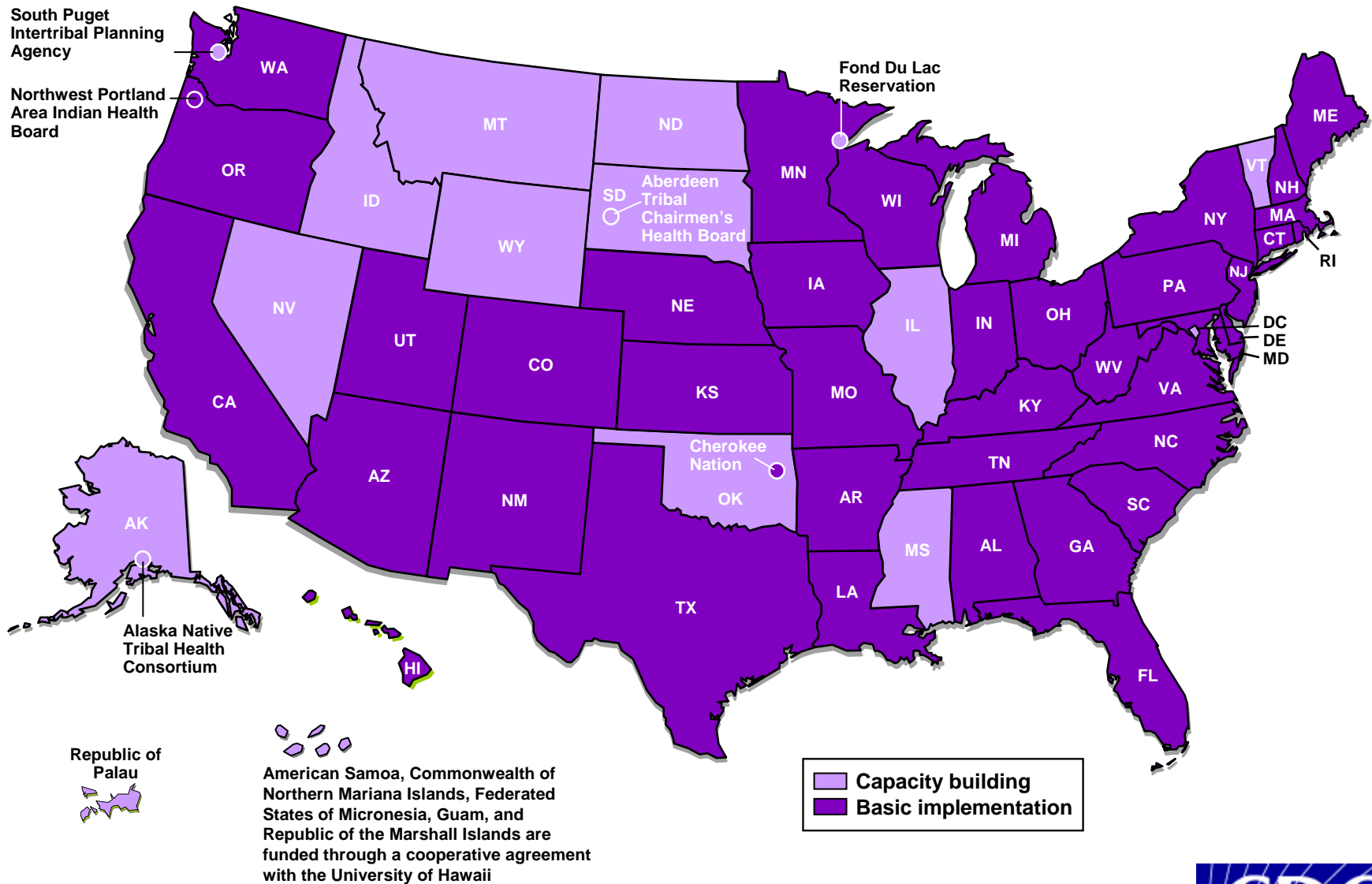
- Brief overview of CCC in the U.S. from an national partner perspective
- Review the Cancer Control PLANET knowledge integration model
- Does expanding Cancer Control PLANET with Canadian content make sense?

Do we have a U.S. Cancer Control Strategy?

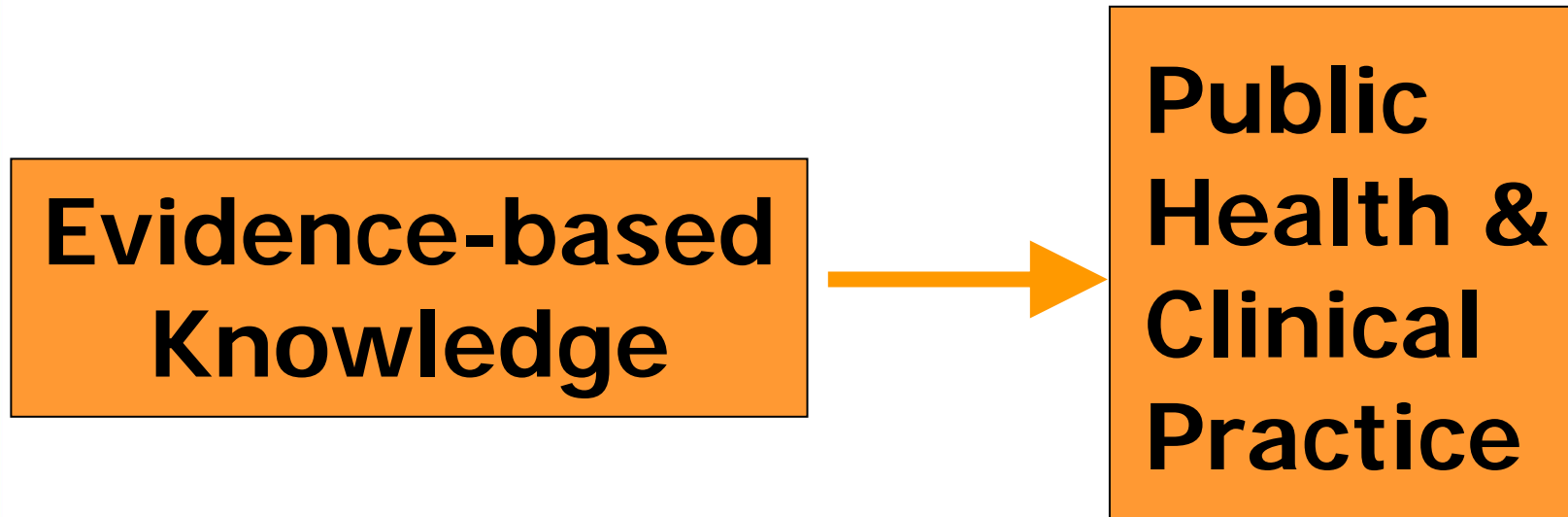
- No, there is no national strategy in the U.S. applying uniformly to all states, tribes, and territories.
- Yes, we have a national partnership model for promoting comprehensive cancer control planning and implementation by states, tribes, territories.
- NCI's primary role in the partnership is to support the integration of science with service.



2005 - 06 National Comprehensive Cancer Control Programs



KNOWLEDGE TRANSLATION



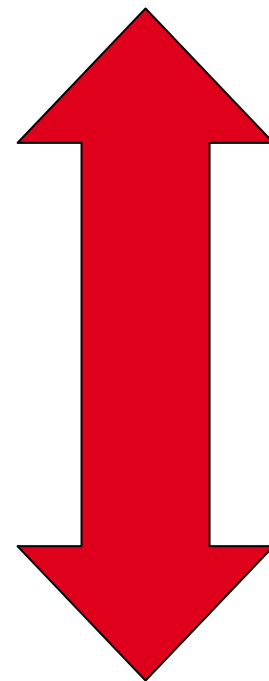
"The transfer of evidenced-based knowledge into routine or representative practice"

Glasgow, R SBM (2005) *26th Annual SBM Meeting, Symposium #22: Disseminating Behavioral Medicine Research: Making the Translational Leap.*

What is Evidence.....?

- Surveillance Data
- Systematic Reviews of Multiple Intervention Research Studies
- One Intervention Research Study
- Program Evaluation
- Word of Mouth/Marketing
- Personal Experience

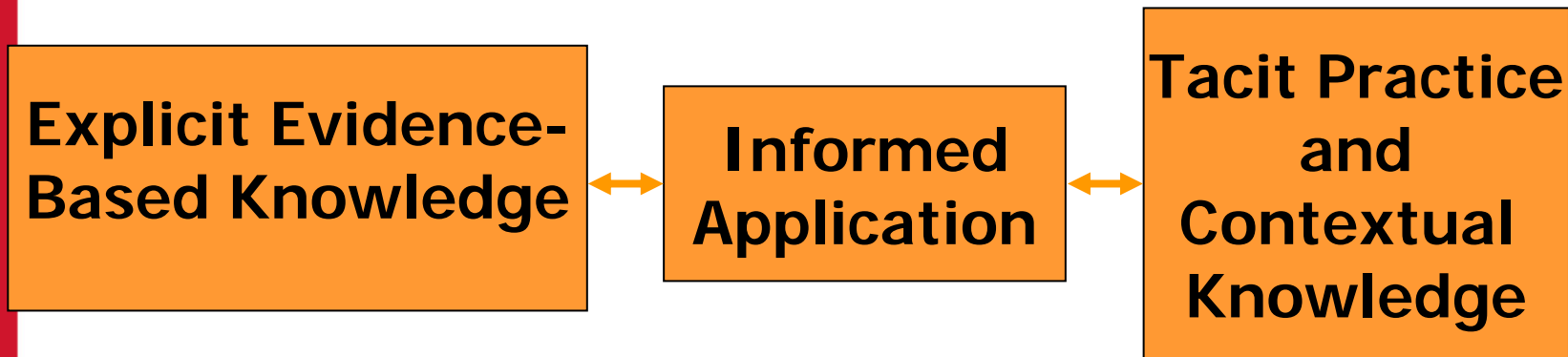
OBJECTIVE



SUBJECTIVE

...like beauty, it's in the eye of the beholder

KNOWLEDGE INTEGRATION



"The informed combination of evidence-based knowledge and practice/contextual knowledge into local community applications."

Adapted from Glasgow, R SBM (2005) *26th Annual SBM Meeting, Symposium #22: Disseminating Behavioral Medicine Research: Making the Translational Leap.*

Follow 5 steps to develop a comprehensive cancer control plan or program



Find information by cancer control topic

[Learn why these steps are important](#)

Step 1 Assess program priorities

[State Cancer Profiles](#) (CDC, NCI)

- Statistics for prioritizing cancer control efforts in the nation, states, and counties

Step 2 Identify potential partners

[Find Program Partners in Cancer Control](#)

[Find Research Partners in Cancer Control](#)

- Contact information for ACS, CDC and NCI program partners and research partners by state and region

Step 3 Research reviews of different intervention approaches

[Guide to Community Preventive Services](#) (Federally sponsored)

- Recommendations for population-based intervention approaches
- Recommendations on screening, counseling, and other clinical regimens

[Additional Research Evidence Reviews](#)

Step 4 Find research-tested intervention programs and products

[Research-tested Intervention Programs \(RTIPs\)](#) (NCI, SAMHSA)

- Summary statements, ratings, and products from cancer prevention and control programs tested in research

Step 5 Plan and evaluate your program

[Guidance for Comprehensive Cancer Control Planning](#) (CDC)

[Comprehensive Cancer Control Plans](#)

- State, tribe and territory plans

[Put Prevention Into Practice](#) (AHRQ)

- Guidance for linking research and practice

- [Breast Cancer](#)
- [Cervical Cancer](#)
- [Colorectal Cancer](#)
- [Diet / Nutrition](#)
- [Informed Decision Making](#)
- [Physical Activity](#)
- [Sun Safety](#)
- [Tobacco Control](#)

PLANET Sponsors



Note: This web site is best viewed in [Internet Explorer](#) (version 5.0 or higher) or [Netscape](#) (version 7.0 or higher) at a [screen resolution](#) of 1024 by 768 or more.

We welcome your feedback on the Cancer Control PLANET and its satellite Web sites. To submit feedback, please [contact us](#). Thank you for helping to improve this site for the cancer control community.

<http://cancercontrolplanet.cancer.gov>

Quick Profiles

Area

Cancer

Generate Profile

Comparison Tables



Rate/Trend Comparisons

set higher priority for cancer control when rates are high or rising
[learn more...](#)

- [by State/County](#) prioritize cancer sites
- [by Cancer](#) prioritize states or counties in a state



Death Rates

for states or for counties in a state
[learn more...](#)



Incidence Rates

for states with high quality cancer registries
[learn more...](#)

Interactive Graphs and Maps



5-Year Rate Changes

in cancer mortality or incidence for all major cancer sites by user selectable criteria
[learn more...](#)



Historical Trends

compare trends in cancer mortality and incidence by user selectable criteria
[learn more...](#)



Latest Rates, Percents, and Counts

explore relationships across geography of mortality, incidence, demographics, or risk factors
[learn more...](#)



Interactive Maps

for states or for counties in a state
[learn more...](#)

Support Data



Screening and Risk Factors

prevalence percents by state from behavioral surveys
[learn more...](#)



Peer Counties

identify counties that are comparable based on a user specified criteria
[learn more...](#)



Age Distribution

male and female population sizes by age groups by user selectable criteria
[learn more...](#)

[Cancer Control PLANET Home](#)

New Releases

[2002 & 2003 BRFSS Survey Data](#)

[2001 USCS Incidence Data](#)

2002 SEER Incidence Data (also released in the [Cancer Statistics Review](#))
[2002 Mortality Data](#)

[Release Schedule](#)

Help & About

[About this Site](#)

[Quick Reference Guides](#)

[Tutorials](#)

[Interpret Rankings](#)

[Data Use Restrictions](#)

[Low Vision/Accessibility](#)

Note: This Web site is best viewed in [Internet Explorer](#) (version 5.0 or higher) or [Netscape](#) (version 7.0 or higher) at a [screen resolution](#) of 1024 by 768 or more.

Links

[State Registry Contacts](#)

[US Cancer Statistics: 2001 Incidence](#)

Resources for Cancer Control:
[Cancercontrolplanet.cancer.gov](#)

[Cancer Progress Report - 2003 Update](#)

[Annual Report to the Nation](#)

[CDC's National Program of Cancer Registries](#)

[NCI's SEER - Surveillance, Epidemiology, and End Results](#)

[Cancer Facts and Figures \(American Cancer Society\)](#)

[Finding Cancer Statistics](#)
[more...](#)

Links to non-Federal organizations found at this site are provided solely as a service to our users. These links do not constitute an endorsement of these organizations or their programs by the Federal Government, and none should be inferred. The Federal Government is not responsible for the content of the individual organization Web pages found at these links.

Area:



[About this Graph](#)

Data:



[Quick Reference Guide](#)

Race:



[Tutorial](#)

Sex:

Age:

choose age group

All Ages

<50

50+

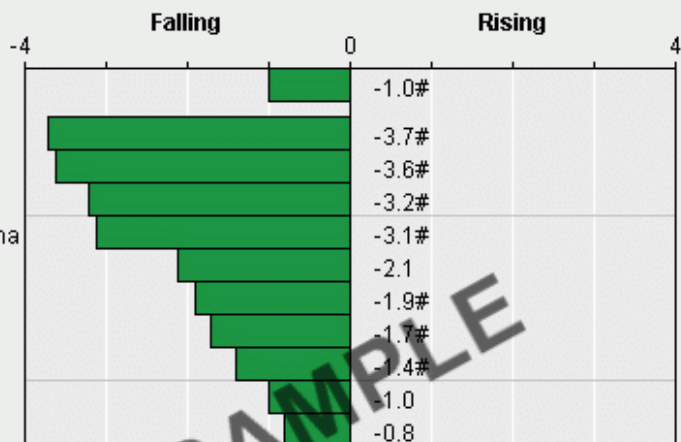
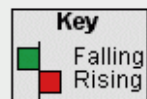
<65

65+



[Data Use Restrictions](#)

5-Year Rate Changes - Mortality United States, 1998-2002 All Ages, Both Sexes, All Races



[Data Table](#)



[Export Data](#)

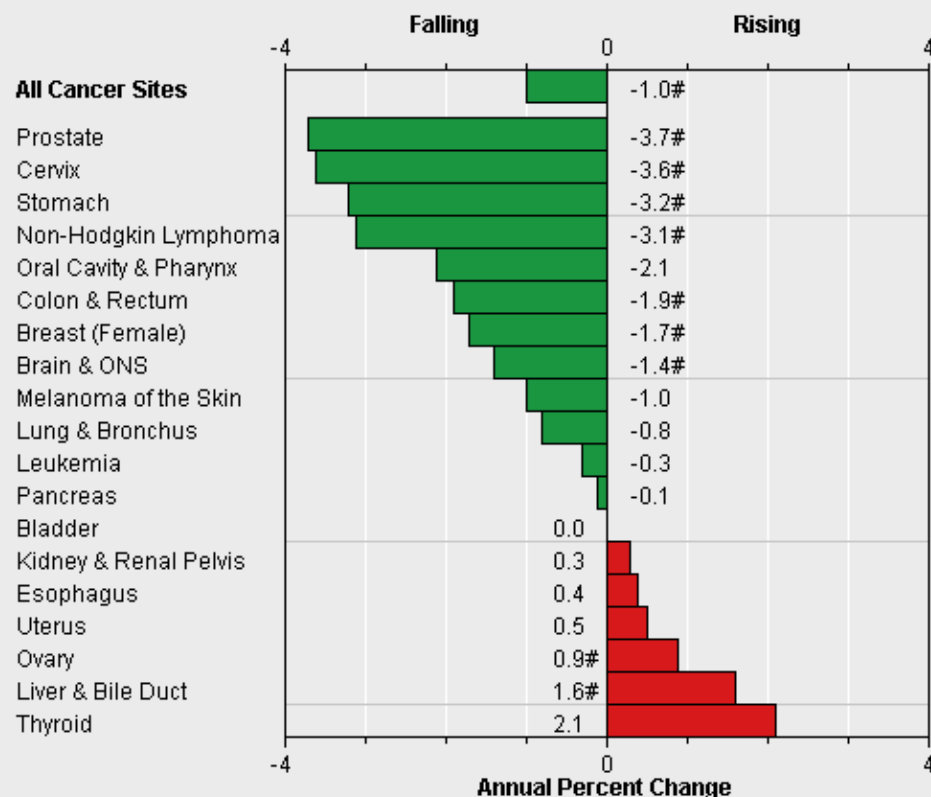
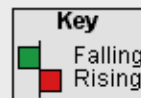


[Interpret](#)

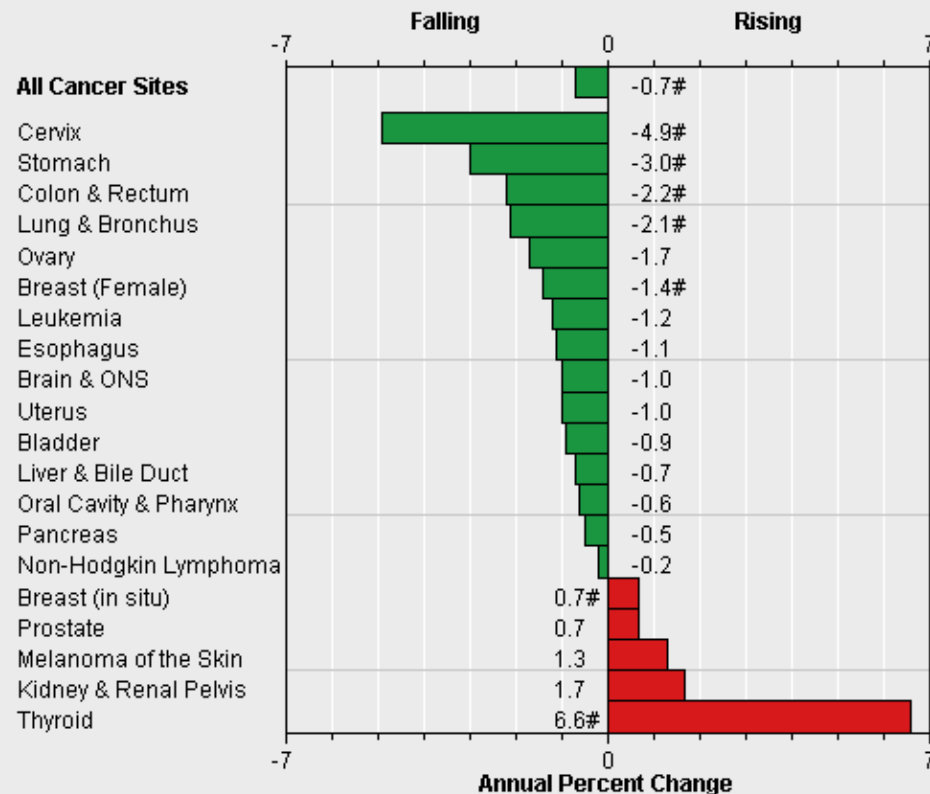
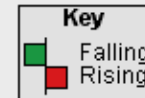


[Printable View](#)

5-Year Rate Changes - Mortality
United States, 1998-2002
All Ages, Both Sexes, All Races



5-Year Rate Changes - Incidence
SEER 9 Registries, 1998-2002
All Ages, Both Sexes, All Races



Created by statecancerprofiles.cancer.gov on 04/14/2006 9:23 am.
Annual Percent Change (APC) over the 5-year period calculated by [SEER*Stat](#).
Source: Death data provided by [National Vital Statistics System](#) public use data file. Death rates calculated by the National Cancer Institute using [SEER*Stat](#). Death rates are age-adjusted to the 2000 US standard population by 5-year age groups. Population counts for denominators are based on Census populations as [modified](#) by NCI.

- The annual percent change is significantly different from zero ($p < 0.05$).

Created by statecancerprofiles.cancer.gov on 04/14/2006 9:24 am.
Annual Percent Change (APC) over the 5-year period calculated by [SEER*Stat](#).
Source: Incidence data provided by [SEER Program](#). Rates calculated by the National Cancer Institute using [SEER*Stat](#). Rates are age-adjusted to the 2000 US standard population by 5-year age groups. Rates are for invasive cancer only, unless otherwise specified. Population counts for denominators are based on Census populations as [modified](#) by NCI.

- The annual percent change is significantly different from zero ($p < 0.05$).

Quick Profiles

Area

Cancer

Generate Profile

Comparison Tables



Rate/Trend Comparisons

set higher priority for cancer control when rates are high or rising
[learn more...](#)

- [by State/County](#) prioritize cancer sites
- [by Cancer](#) prioritize states or counties in a state



Death Rates

for states or for counties in a state
[learn more...](#)



Incidence Rates

for states with high quality cancer registries
[learn more...](#)

Interactive Graphs and Maps



5-Year Rate Changes

in cancer mortality or incidence for all major cancer sites by user selectable criteria
[learn more...](#)



Historical Trends

compare trends in cancer mortality and incidence by user selectable criteria
[learn more...](#)



Latest Rates, Percents, and Counts

explore relationships across geography of mortality, incidence, demographics, or risk factors
[learn more...](#)



Interactive Maps

for states or for counties in a state
[learn more...](#)



Support Data



Screening and Risk Factors

prevalence percents by state from behavioral surveys
[learn more...](#)



Peer Counties

identify counties that are comparable based on a user specified criteria
[learn more...](#)



Age Distribution

male and female population sizes by age groups by user selectable criteria
[learn more...](#)

[Cancer Control PLANET Home](#)

New Releases

[2002 & 2003 BRFSS Survey Data](#)

[2001 USCS Incidence Data](#)

2002 SEER Incidence Data (also released in the [Cancer Statistics Review](#))
[2002 Mortality Data](#)

[Release Schedule](#)

Help & About

[About this Site](#)

[Quick Reference Guides](#)

[Tutorials](#)

[Interpret Rankings](#)

[Data Use Restrictions](#)

[Low Vision/Accessibility](#)

Note: This Web site is best viewed in [Internet Explorer](#) (version 5.0 or higher) or [Netscape](#) (version 7.0 or higher) at a [screen resolution](#) of 1024 by 768 or more.

Links

[State Registry Contacts](#)

[US Cancer Statistics: 2001 Incidence](#)

Resources for Cancer Control:
[Cancercontrolplanet.cancer.gov](#)

[Cancer Progress Report - 2003 Update](#)

[Annual Report to the Nation](#)

[CDC's National Program of Cancer Registries](#)

[NCI's SEER - Surveillance, Epidemiology, and End Results](#)

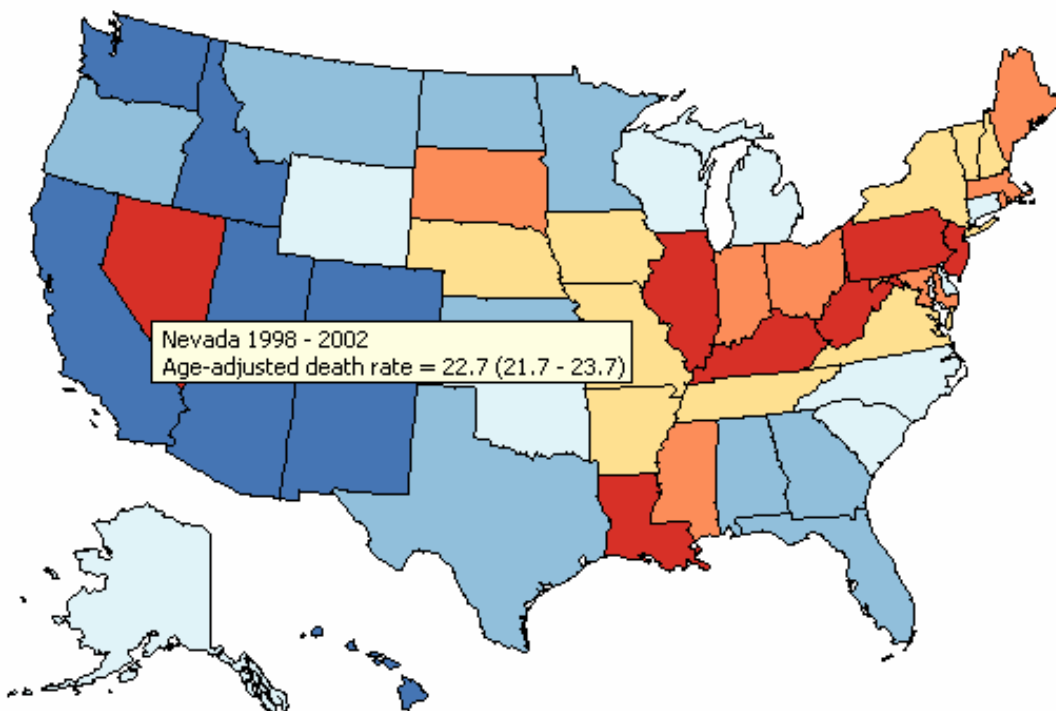
[Cancer Facts and Figures \(American Cancer Society\)](#)

[Finding Cancer Statistics](#)
[more...](#)

Links to non-Federal organizations found at this site are provided solely as a service to our users. These links do not constitute an endorsement of these organizations or their programs by the Federal Government, and none should be inferred. The Federal Government is not responsible for the content of the individual organization Web pages found at these links.

Age-Adjusted Death Rates for United States, 1998 - 2002

Colon & Rectum All Races, Both Sexes, All Ages



Age-Adjusted
Annual Death Rate
(Deaths per 100,000)

Quantile Interval

22.7 to 26.4
21.8 to 22.6
21.0 to 21.7
19.8 to 20.9
18.2 to 19.7
16.1 to 18.1

United States
Rate (95% C.I.)
20.5 (20.4 - 20.6)

Healthy People 2010
Goal 03-05
13.9

[Save Map Image](#)

[Data Table](#)

[Export Data](#)

[Interpret](#)

[Printable View](#)

Action Notes

- Rollover a state with your mouse to see the rate (and 95% C.I.)
- Click on a state to show the counties of that state
- Scroll to the top of the web page to change the parameters of the map

Created by statecancerprofiles.cancer.gov on 11/28/2005 10:30 am.

[State Cancer Registries](#) may provide more current or more local data.

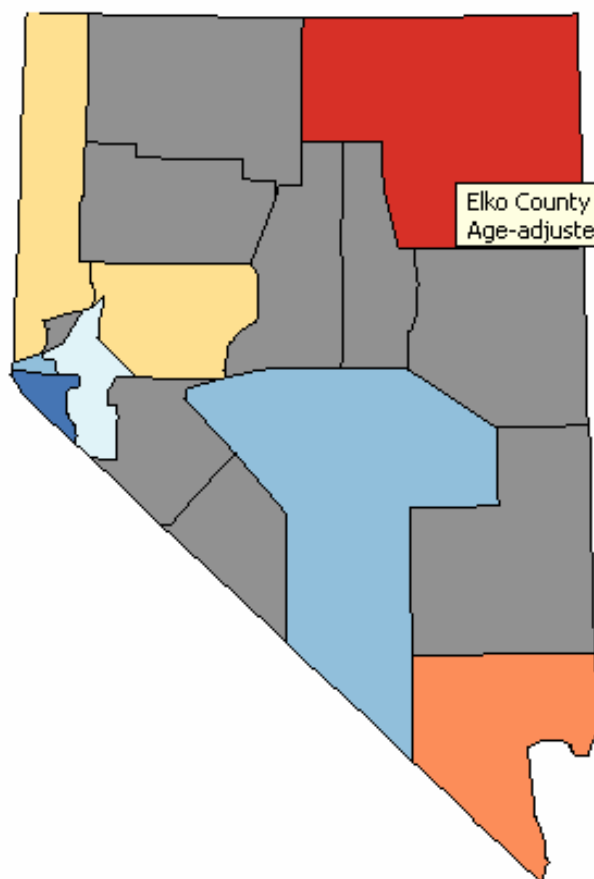
Healthy People 2010 Goal 03-05 : Reduce the colorectal cancer death rate to 13.9.

[Healthy People 2010](#) Objectives provided by the [Centers for Disease Control and Prevention](#).

Source: Death data provided by the [National Vital Statistics System](#) public use data file. Death rates calculated by the National Cancer Institute using [SEER*Stat](#). Death rates are age-adjusted to the 2000 US standard population by 5-year age groups. Population counts for denominators are based on Census populations as [modified](#) by NCI.

Age-Adjusted Death Rates for Nevada, 1998 - 2002

Colon & Rectum All Races, Both Sexes, All Ages



Age-Adjusted
Annual Death Rate
(Deaths per 100,000)

Quantile Interval

- 23.6 to 29.4
- 22.8 to 23.5
- 18.9 to 22.7
- 18.5 to 18.8
- 15.6 to 18.4
- 15.5
- Suppressed¹

United States
Rate (95% C.I.)
20.5 (20.4 - 20.6)

Nevada
Rate (95% C.I.)
22.7 (21.7 - 23.7)

Healthy People 2010
Goal 03-05
13.9

- [Save Map Image](#)
- [Data Table](#)
- [Export Data](#)
- [Interpret](#)
- [Printable View](#)

Action Notes

- Rollover a county with your mouse to see the rate (and 95% C.I.)
- Scroll to the top of the web page to change the parameters of the map

Created by statecancerprofiles.cancer.gov on 11/28/2005 10:32 am.

[State Cancer Registries](#) may provide more current or more local data.

¹ Data have been [suppressed](#) to ensure confidentiality and stability of rate estimates.

Healthy People 2010 Goal 03-05 : Reduce the colorectal cancer death rate to 13.9.

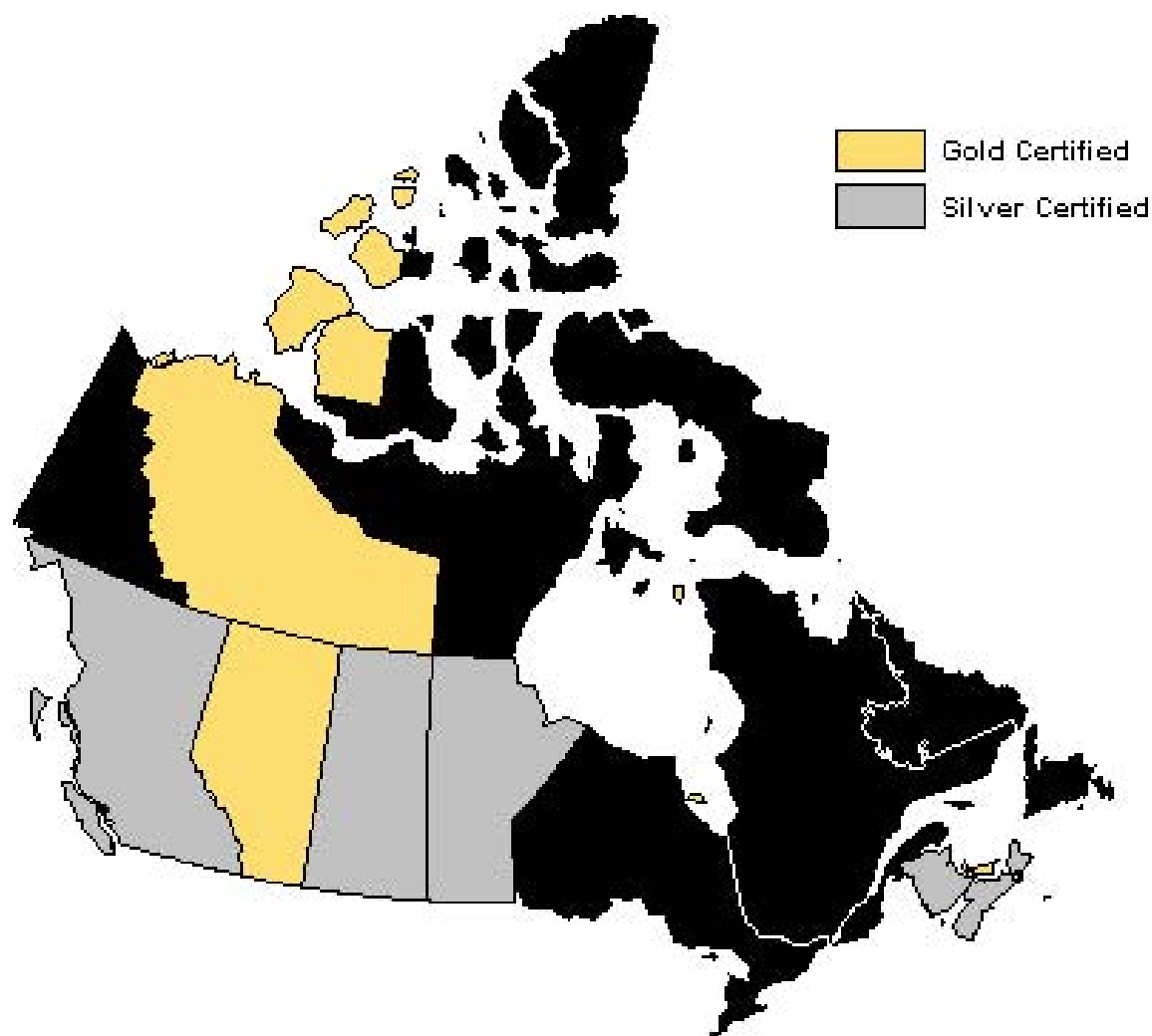
[Healthy People 2010](#) Objectives provided by the [Centers for Disease Control and Prevention](#).

Source: Death data provided by the [National Vital Statistics System](#) public use data file. Death rates calculated by the National Cancer Institute using [SEER*Stat](#). Death rates are age-adjusted to the 2000 US standard population by 5-year age groups. Population counts for denominators are based on Census populations as [modified](#) by NCI.

NAACCR Registry Certification Criteria - 2003 Data Year

Criteria	Silver	Gold
Completeness	90%	95%
% Passing EDITS	97%	100%
Death Certificate Only Cases	$\leq 5\%$	$\leq 3\%$
Timeliness	By 02 Dec 2005 (23 months)	
Duplicate Reports	$\leq 2/1,000$	$\leq 1/1,000$
Missing Data Field Sex, Age, Count	$\leq 3\%$	$\leq 2\%$
Missing Data Field Race	$\leq 5\%$	$\leq 3\%$

GOLD AND SILVER LEVEL CERTIFICATION STATUS OF NAACCR CANADIAN CANCER REGISTRIES FOR 2002 DATA



PLANET for Health

Plan, Link, Act, Network with Evidence-based Tools

Welcome

PLANET for Health is a web portal that provides links to comprehensive planning resources for public health professionals.

Risk Factors

- Obesity, Diet and Physical Activity
- Tobacco
- Sun Safety
- Alcohol and Drug Use



Diseases

- Cancer
- Diabetes
- Heart Disease
- Mental Illness

○
About this site

○
Sponsors

○
Fact Sheet

○
Contact Us

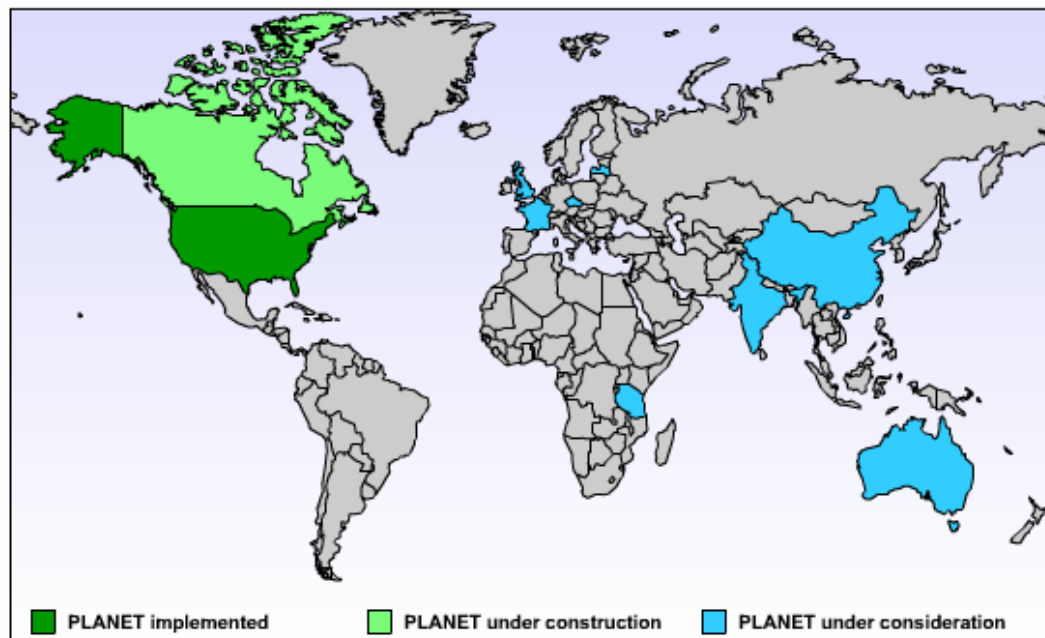
Cancer Control PLANET

Links to comprehensive cancer control resources for public health professionals

[Contact Us](#)
[About This Site](#)
[Fact Sheet \(PDF\)](#)
[PLANET for Health Home](#)

Countries collaborating through the PLANET web portal

- **PLANET implemented**
United States ([website](#))
- **PLANET under construction**
Canada
- **PLANET under consideration**
Australia
China
Czech Republic
France
India
Israel
Latvia
Tanzania
United Kingdom





Government
of Canada

Gouvernement
du Canada

Provincial Cancer Profiles

Dynamic views of cancer statistics for prioritizing
cancer control efforts in the provinces and territories

Canada

Français

Quick Profiles

Area

Cancer

Generate Profile

Comparison Tables



Rate/Trend Comparisons

set higher priority for cancer control when rates are high or rising
[learn more...](#)

- [prioritize cancer sites](#) for a specific area
- [prioritize areas](#) for a specific cancer site



Death Rates

for provinces and territories or sub areas
[learn more...](#)



Incidence Rates

for provinces and territories with high quality registries
[learn more...](#)

Interactive Graphs and Maps



5-Year Rate Changes

in cancer mortality or incidence for all major cancer sites by user selectable criteria
[learn more...](#)



Historical Trends

compare trends in cancer mortality and incidence by user selectable criteria
[learn more...](#)



Latest Rates, Percents, and Counts

explore relationships across geography of mortality, incidence, demographics, or risk factors
[learn more...](#)



Interactive Maps

for provinces and territories or sub areas
[learn more...](#)



Support Data



Screening and Risk Factors

prevalence percents from behavioral surveys
[learn more...](#)



[Cancer Control PLANET Home](#)

New Releases

[2004 Screening and Risk Factors](#)

[2003 Incidence Data](#)

[2003 Mortality Data](#)

[Release Schedule](#)

Help & About

[About this Site](#)

[Quick Reference Guides](#)

[Tutorials](#)

[Interpret Rankings](#)

[Data Use Restrictions](#)

[Low Vision/Accessibility](#)

Note: This Web site is best viewed in [Internet Explorer](#) (version 5.0 or higher) or [Netscape](#) (version 7.0 or higher) at a [screen resolution](#) of 1024 by 768 or more.

Français

Area:
 Cancer:
 Sex:
 Age:
 Year(s):

[About this Map](#)
[Quick Reference Guide](#)
[Tutorial](#)

Map Options

Interval Type:
 Number of Intervals:
 Color Scheme:

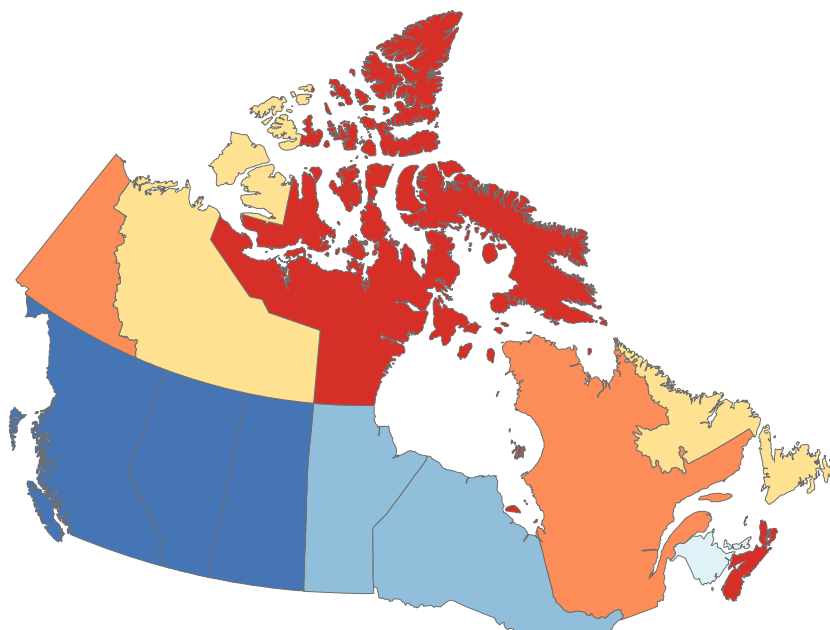
Generate Map

[Data Use Restrictions](#)

Age-Adjusted Death Rates for Canada, 1992-2001

All Cancer Sites

Both Sexes, All Ages



Age-Adjusted Annual Death Rate (Deaths per 100,000)

Quantile Interval

215.9 to 333.5
 209.8 to 215.8
 202.0 to 209.7
 193.6 to 201.9
 178.2 to 193.5
 171.9 to 178.1

Canada
 Rate (95% C.I.)
 193.0 (192.5 - 193.6)

[Save Map Image](#)

[Data Table](#)

[Export Data](#)

[Interpret](#)

[Printable View](#)

Action Notes

- Rollover an area with your mouse to see the rate (and 95% C.I.)
- Click on an area to show the sub areas
- Scroll to the top of the web page to change the parameters of the map

Are we skating to where the puck will be?

- Given the national strategy for cancer control in Canada does expanding the CCPLANET with Canadian content make sense?
- If yes, how best to proceed?
 - Provincial role (individual and/or collective), Statistics Canada role, NAACCR role?
 - What should be the reporting standard set for all Canadian incidence data (NAACCR silver or gold)?
 - Timeline?
- Other questions?